

# ***WATER PUMP***

WB20XH  
WB20XH2  
WB30XH  
WB30XH2  
WL20XH  
WL30XH

**PARTS CATALOGUE**

**2**



---

FOREWORD INDEX

**1**

---

ENGINE GROUP

**2**

---

FRAME GROUP

**3**

---

PART NUMBER INDEX

**4**

---

PART NAME INDEX

**5**

---







### Instruction for use of parts catalogue

- **This parts catalogue was prepared based on the latest information available as of December 20, 2013.**
- See the parts catalogue news for any revision that is made after December 20, 2013.
- **Always specify the part number when ordering a part.**
  - Check the model, type, serial numbers, color, maker, and the size as needed before ordering a part.
  - Note that the illustrations (part drawings) can differ from the actual parts in shape.  
They are given just to help you to refer to the parts.
- **When modifications or additions to this parts catalogue are made, a revised edition will be issued at an appropriate time, with successively progressing revision numbers on the cover. We recommend obtaining such revisions in order to keep your parts catalogue up-to-date at all times. To check whether a parts catalogue revision has been issued, please contact your Honda distributor.**

Initial version issue date January 10, 2012  
Honda Motor Co., Ltd.

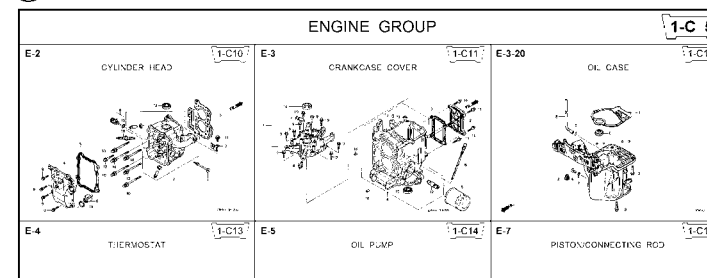
### CONTENTS

|   | Page | Address No. |
|---|------|-------------|
| ● Instruction for use of parts catalogue .....                      | 1    | B 1         |
| ● How to refer to the part information .....                        | 2    | B 2         |
| ● Part catalogue structure .....                                    | 3    | B 3         |
| ● When the parts were revised .....                                 | 4    | B 4         |
| ● Abbreviations used in the parts catalogue .....                   | 4    | B 4         |
| ● How to check the part block and serial numbers .....              | 5    | B 5         |
| ● Models, parts catalogue codes and applicable serial numbers ..... | 6    | B 6         |
| ● Features of each type .....                                       | 8    | B 8         |
| ● Fuel hose, general purpose hoses and vinyl hose .....             | 9    | B 9         |
| ● FLAT RATE SERVICE TIME .....                                      | 10   | B10         |
| ● Illustrated index .....   | 15   | B15         |
| ● ENGINE GROUP .....  | 18   | D 1         |
| ● FRAME GROUP .....   | 38   | F 1         |
| ● PART NO. INDEX .....  | 42   | G 1         |
| ● PART NAME INDEX .....   | 44   | H 1         |



## How to refer to the part information

## A Reference with “Illustrated index”



## B Reference with “Part number index”

| Part Number     | Address | Page | Ref. | Part Number   | Address | Page |
|-----------------|---------|------|------|---------------|---------|------|
| 06000           |         |      |      | 15212-ZW9-000 | 1-C14   | 3C   |
| 06316-ZW9-000   | 1-G9    | 88   | 1    | 15220-ZW9-003 | 1-C14   | 3C   |
| 11000           |         |      |      | 15332-ZW9-000 | 1-E8    | 55   |
| 11300-ZW9-405   | 1-C11   | 27   | 1    | 15332-ZW9-A30 | 1-E11   | 58   |
| 11300-ZW9-406   | 1-C11   | 27   | 1    | 15400-PFB-004 | 1-C11   | 27   |
| 11340-ZW9-000   | 1-C11   | 27   | 2    | 15422-ZW9-000 | 1-C14   | 3C   |
| 11342-ZW9-000   | 1-C11   | 27   | 3    | 15473-881-000 | 1-C14   | 3C   |
| 11381-ZW9-003   | 1-C12   | 28   | 1    | 15474-ZW9-000 | 1-C14   | 3C   |
|                 |         |      |      | 15611-921-000 | 1-C10   | 26   |
|                 |         |      |      | 15655-ZW9-000 | 1-C11   | 27   |
| 12000           |         |      |      | 16000         |         |      |
| 12000-ZW9-405ZA | 1-C11   | 27   | 4    | 16010-ZV4-005 | 1-D4    | 36   |
| 12155-ZV4-A00   | 1-C13   | 29   | 1    | 16011-ZV4-005 | 1-D4    | 36   |
| 12166-ZW9-000   | 1-C10   | 26   | 1    | 16013-ZW9-003 | 1-D4    | 36   |
| 12209-GB4-681   | 1-C16   | 32   | 1    | 16016-ZW9-003 | 1-D4    | 36   |
| 12210-ZW9-405ZA | 1-C10   | 26   | 2    | 16016-ZW9-721 | 1-D4    | 36   |
| 12216-ZE2-300   | 1-E8    | 55   | 1    | 16023-ZW9-003 | 1-D4    | 36   |
|                 | 1-E11   | 58   | 1    | 16024-ZV4-650 | 1-D4    | 36   |
|                 |         |      |      | 16028-ZV4-650 | 1-D4    | 36   |

## C Reference with “Part name index”

| Partname                | Address | Page | Ref. |
|-------------------------|---------|------|------|
| [ A ]                   |         |      |      |
| ABSORBER, FUEL          | 1-E15   | 62   | 5    |
| ARMATURE COMP.          | 1-D11   | 43   | 7    |
| ARM COMP., LINK JOINT   | 1-G6    | 85   | 18   |
| ARM COMP., SHIFT LINK   | 1-G6    | 85   | 14   |
| ARM COMP., TILT         | 1-F15   | 79   | 20   |
| ARM, FUEL PUMP ROCKER   | 1-C16   | 32   | 4    |
| ARM, REVERSE LOCK       | 1-F15   | 79   | 18   |
| ARM, SHIFT LINK         | 1-F11   | 74   | 7    |
| ARM, STOPPER            | 1-D1    | 33   | 12   |
| ARM, THROTTLE REMOTE    | 1-F11   | 74   | 6    |
| ARM, VALVE ROCKER       | 1-C16   | 32   | 3    |
| [ B ]                   |         |      |      |
| BAG, TOOL, 160MM        | 1-G5    | 84   | 10   |
| BAND                    | 1-G6    | 86   | 37   |
| BAND B1, WIRE           | 1-F6    | 69   | 1    |
| BAND, CORD              | 1-F3    | 67   | 18   |
| BAND, TUBE CLIP, 11MM   | 1-E15   | 63   | 20   |
| BAND, TUBE CLIP, 12.5MM | 1-E15   | 63   | 19   |

Address No. 1-C10

Block No. E-2

Ref No.

CYLINDER HEAD

Service item F.R.T.

|                                 |     |
|---------------------------------|-----|
| O-RING, 26X2.7                  | 0.1 |
| PLUG, SPARK                     | 0.2 |
| O-RING, 9.5X1.5                 | 0.2 |
| SENSOR ASSY., WATER TEMPERATURE | 0.3 |
| COVER COMP., HEAD               | 1.8 |
| GASKET, CYLINDER HEAD           | 2.4 |
| OIL SEAL, 20X32X6               | 3.1 |
| HEAD COMP., CYLINDER            | 3.1 |

| Ref. No. | Part No.        | Description                     | Reqd. QTY |      |      |      |      |      | Serial No. | Parts catalogue code |
|----------|-----------------|---------------------------------|-----------|------|------|------|------|------|------------|----------------------|
|          |                 |                                 | 9901      | 9901 | 9901 | 1001 | 1001 | 1001 |            |                      |
| 1        | 12166-ZW9-000   | STOPPER, ENGINE SIDE            | 2         | 2    | 2    | 2    | 2    | 2    |            |                      |
| 2        | 12210-ZW9-000ZA | HEAD COMP., CYLINDER            | 1         | 1    | 1    | 1    | 1    | 1    |            |                      |
| 3        | 12251-ZW9-003   | GASKET, CYLINDER HEAD           | 1         | 1    | 1    | 1    | 1    | 1    |            |                      |
| 4        | 12310-ZW9-000   | COVER COMP., HEAD               | 1         | 1    | 1    | 1    | 1    | 1    |            |                      |
| 5        | 12312-ZW9-000   | PACKING, HEAD COVER             | 1         | 1    | 1    | 1    | 1    | 1    |            |                      |
| 6        | 15611-921-000   | CAP, OIL (NO GAUGE)             | 1         | 1    | 1    | 1    | 1    | 1    |            |                      |
| 7        | 16617-ZW9-000   | HOLDER, CABLE                   | 1         | 1    | 1    | 1    | 1    | 1    | SC,SG      |                      |
|          | 16617-ZW9-010   |                                 | 1         | 1    | 1    | 1    | 1    | 1    | 1001801    | LHC,LHD              |
|          |                 |                                 | 1         | 1    | 1    | 1    | 1    | 1    | 1001801    | LHC,LHD              |
| 8        | 35673-ZW5-003   | SENSOR ASSY., WATER TEMPERATURE | 1         | 1    | 1    | 1    | 1    | 1    |            |                      |
| 9        | 90003-ZW9-000   | BOLT, FLANGE, 6X22              | 4         | 4    | 4    | 4    | 4    | 4    |            |                      |
| 10       | 90007-ZW9-003   | BOLT, FLANGE, 8X83              | 6         | 6    | 6    | 6    | 6    | 6    |            |                      |
| 11       | 90011-ZW9-000   | BOLT, FLANGE, 6X14 (CT200)      | 1         | 1    | 1    | 1    | 1    | 1    |            |                      |
| 12       | 90020-ZW9-000   | BOLT, FLANGE, 8X40              | 2         | 2    | 2    | 2    | 2    | 2    |            |                      |
| 13       | 91202-KJ9-003   | OIL SEAL, 20X32X6               | 1         | 1    | 1    | 1    | 1    | 1    |            |                      |
| 14       | 91301-805-000   | O-RING, 26X2.7                  | 1         | 1    | 1    | 1    | 1    | 1    |            |                      |
| 15       | 91307-PK2-005   | O-RING, 9.5X1.5 (HONDA KIKAKI)  | 1         | 1    | 1    | 1    | 1    | 1    |            |                      |
| 16       | 98059-55916     | PLUG, SPARK (CR5EH-9)           | 2         | 2    | 2    | 2    | 2    | 2    |            |                      |
|          | 98059-55926     | PLUG, SPARK (U16FER9)           | 2         | 2    | 2    | 2    | 2    | 2    |            |                      |

2000.09.20 E

Page No.



## Part catalogue structure

E-2

CYLINDER HEAD

1-C10

Service item

F.R.T.

|                       |       |    |
|-----------------------|-------|----|
| O-RING, 26X2.7        | ..... | 0. |
| PLUG, SPARK           | ..... | 0. |
| O-RING, 9.5X1.5       | ..... | 0. |
| SENSOR ASSY., WATER   | ..... | 0. |
| COVER COMP., HEAD     | ..... | 0. |
| PACKING, HEAD COVER   | ..... | 1. |
| GASKET, CYLINDER HEAD | ..... | 2. |
| OIL SEAL, 20X32X6     | ..... | 3. |
| HEAD COMP., CYLINDER  | ..... | 3. |

| Ref. No. | Part No.        | Description           | Reqd. QTY                       | Serial No. | Parts catalogue code |
|----------|-----------------|-----------------------|---------------------------------|------------|----------------------|
|          |                 |                       | BF BFP BF BFP BF BFP            |            |                      |
|          |                 |                       | 9/9D1 9/9D1 10D1 10D1 10B1 10B1 |            |                      |
| 1        | 12166-ZW9-000   | STOPPER, ENGINE SIDE  | 2                               | 2          | 2                    |
| 2        | 12210-ZW9-000ZA | HEAD COMP., CYLINDER  | 1                               | 1          | 1                    |
|          |                 | *NHS*.....DARK GRAY   | 1                               | 1          | 1                    |
| 3        | 12251-ZW9-003   | GASKET, CYLINDER HEAD | 1                               | 1          | 1                    |
| 4        | 12310-ZW9-000   | COVER COMP., HEAD     | 1                               | 1          | 1                    |
| 5        | 12312-ZW9-000   | PACKING, HEAD COVER   | 1                               | 1          | 1                    |
| 6        | 15611-921-000   | CAP, OIL              | 1                               | 1          | 1                    |
|          |                 | (NO GAUGE)            |                                 |            |                      |
| 7        | 16617-ZW9-000   | HOLDER, CABLE         | 1                               | 1          | 1                    |
|          | 16617-ZW9-010   |                       | 1                               | 1          | 1                    |
|          |                 |                       |                                 |            |                      |

ZW93-B0200

SC,SG  
LHC,LHD

**E-14-10** **THROTTLE ROD** **1-C10/**

Service item F.R.T.

| Ref. No. | Part No. | Description                        | Reqd. QTY                       | Serial No. | Parts catalogue code |
|----------|----------|------------------------------------|---------------------------------|------------|----------------------|
|          |          |                                    | BF BFP BF BFP BF BFP            |            |                      |
|          |          |                                    | 9/9D1 9/9D1 10D1 10D1 10B1 10B1 |            |                      |
| 15       |          | CAM, THROTTLE (INC. RELATIVE PART) | 0.2                             |            |                      |
| 16       |          | LINKAGE, PIVOT                     | 0.3                             |            |                      |
| 17       |          | ROD COMP., THROTTLE                |                                 |            |                      |
|          |          | DIAPHRAGM ASSY.                    |                                 |            |                      |

## ① Address number

- Address No. is provided (in place of the page No.) to help you refer to the part with the part No. or part name.

## ② Block title ③ Block number

## ④ Service item/Flat rate time

## ⑤ Reference number

- Title number marked with the parenthesis or parentheses indicates that it continues from the previous page.

## ⑥ Part number ⑦ Honda color code

## ⑧ Description

## ⑨ Assemblies

- Sections framed with broken lines in the exploded view drawings are available as complete assemblies. (Their individual parts can also be obtained.)

## ⑩ Color description

## ⑪ Note

- Notes are shown with the parentheses in the part name column.

## ⑫ Required quantity

- Required QTY shown in the parenthesis or parentheses indicates the optional part.
- Required QTY marked with "N" Indicates the optional part that should be selected as needed.
- Required QTY indicates the number of the part used in the block.

## ⑬ Serial number

## ⑭ Type

- When the type column is blank, it indicates that the part is applicable to all types.
- As the type of the actual unit may differ from the "parts catalogue, type" please refer to "Models, types and applicable serial numbers" for confirmation.

## ⑮

- Parts enclosed within a dotted line are covered in a different block.

## ⑯

- A hollow arrow indicates the block No. for the parts enclosed within a dotted line .

## ⑰

- A solid arrow indicates the block No. the part in question is connected to.



## When the parts were revised



Be sure to check the serial number!!



| Ref. No. | Part No.        | Description                 | Reqd. QTY |           |         |          |         |          | Serial No. |
|----------|-----------------|-----------------------------|-----------|-----------|---------|----------|---------|----------|------------|
|          |                 |                             | BF 9.9D1  | BFP 9.9D1 | BF 10D1 | BFP 10D1 | BF 10B1 | BFP 10B1 |            |
| 1        | 12166-ZW9-000   | STOPPER, ENGINE SIDE .....  | 2         | 2         | 2       | 2        | 2       | 2        |            |
| 2        | 12210-ZW9-000ZA | HEAD COMP., CYLINDER        |           |           |         |          |         |          |            |
|          |                 | *NH8*.....DARK GRAY         | 1         | 1         | 1       | 1        | 1       | 1        |            |
| 3        | 12251-ZW9-003   | GASKET, CYLINDER HEAD ..... | 1         | 1         | 1       | 1        | 1       | 1        |            |
| 4        | 12310-ZW9-000   | COVER COMP., HEAD .....     | 1         | 1         | 1       | 1        | 1       | 1        |            |
| 5        | 12312-ZW9-000   | PACKING, HEAD COVER .....   | 1         | 1         | 1       | 1        | 1       | 1        |            |
| 6        | 15611-921-000   | CAP, OIL .....              | 1         | 1         | 1       | 1        | 1       | 1        |            |
|          |                 | (NO GAUGE)                  |           |           |         |          |         |          |            |
| 7        | 16617-ZW9-000   | HOLDER, CABLE (###).....    | 1         | 1         | 1       | 1        | 1       | 1        |            |
|          | 16617-ZW9-010   | .....                       | 1         | 1         | 1       | 1        | 1       | 1        |            |

The number has been used from the initial model without revision.

When shown at the left side, it is applicable to the models of No.1001801 and the subsequent numbers.

When shown at the right side, it is applicable to the models up to No.1001800.

- The parts listed with "###" at the end of the parts name have limited supply period (parts not for sale).

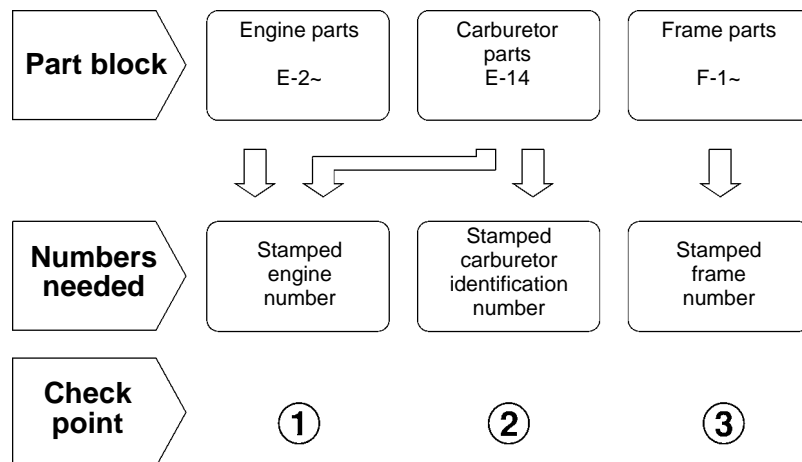
## Abbreviations used in the parts catalogue

- The following abbreviations are used in the parts name column.

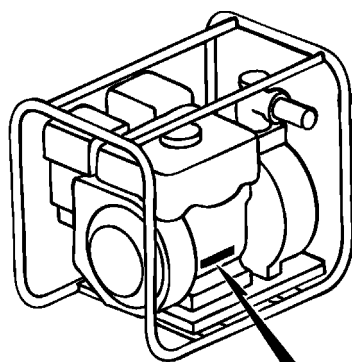
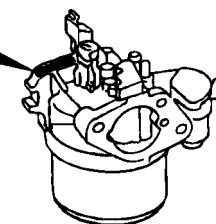
|  |                             |
|--|-----------------------------|
| A ..... Ampere                               | FR. ....Front               |
| A.C. .... Alternating current                | IN. ....Inlet               |
| ASSY. .... Assembly                          | L (100L) .Link (100 Links)  |
| AT. .... Automatic transmission              | L. ....Left                 |
| C.D.I. .... Capacitive discharge ignition    | MM .....Millimeter          |
| COMP. ... Complete                           | MT. ....Manual Transmission |
| D.C. .... Direct current                     | P.T.O. ....Power take off   |
| EX. .... Exhaust                             | R. ....Right                |
| G.F.C.I ... Ground fault circuit interruptor | RR. ....Rear                |
| HEX. .... Hexagonal                          | STD. ....Standard           |
| H.S.T. .... Hydrostatic transmission         | T (22T) ...Tooth (22 Teeth) |
|  | V .....Volt                 |
|  | W .....Watt                 |



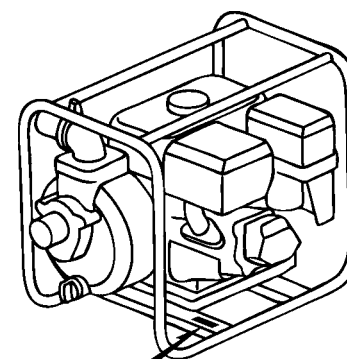
### How to check the part block and serial numbers



②  
CARBURETOR  
IDENTIFICATION NUMBER



①  
TYPE  
ENGINE SERIAL NUMBER



③  
FRAME SERIAL NUMBER



### Models, parts catalogue codes and applicable serial numbers

- Models, parts catalogue codes and applicable serial Nos. given in this parts catalogue can be identified as follows.

| Model   | Type | Parts catalogue type | Engine  |      | Applicable engine serial No. | Applicable frame serial No. | Applicable carburetor identification No. |
|---------|------|----------------------|---------|------|------------------------------|-----------------------------|--|
|         |      |                      | Model   | Type |                              |                             |  |
| WB20XH  | BRX  | BRX                  | GX160H1 | AY8  | GCAAH-1000001~               | WABC-9000001~               | BE66K A                                  |
|         | DR   | DR                   |         | AY2  |                              |                             | BEA2B A                                  |
|         | DRW  | DRW                  |         | AY7  |                              |                             | BE66K A                                  |
|         | DRX  | DRX                  |         | AY8  |                              | WABC-1000001~               | BEA2B A                                  |
| WB20XH2 | BRX  | BRX                  |         | AY2  |                              |                             | BE66K A                                  |
|         | DR   | DR                   |         | AY7  |                              |                             | BEA2B A                                  |
|         | DRX  | DRX                  |         | AY8  |                              | WACC-9000001~               | BE66K A                                  |
| WB30XH  | BRX  | BRX                  |         | AY2  |                              |                             | BEA2B A                                  |
|         | DR   | DR                   |         | AY7  |                              |                             | BE66K A                                  |
|         | DRW  | DRW                  |         | AY8  |                              |                             | BEA2B A                                  |
|         | DRX  | DRX                  |         | AY2  |                              |                             | BE66K A                                  |
| WB30XH2 | BRX  | BRX                  |         | AY7  |                              |                             | BEA2B A                                  |
|         | DR   | DR                   |         | AY8  |                              |                             | BE66K A                                  |
|         | DRX  | DRX                  |         | AY2  |                              |                             | BEA2B A                                  |



| Model  | Type | Parts catalogue type | Engine |      | Applicable engine serial No. | Applicable frame serial No. | Applicable carburetor identification No. |
|--------|------|----------------------|--------|------|------------------------------|-----------------------------|--|
|        |      |                      | Model  | Type |                              |                             |  |
| WL20XH | DR   | DR                   | GP160H | AY1  | GCASH-1000001~               | WADC-1000001~               | BEA2F A                                  |
|        | DRW  | DRW                  |        | AY4  |                              |                             |  |
|        | DRX  | DRX                  |        |      |                              |                             |  |
| WL30XH | DR   | DR                   |        | AY1  |                              | WAGC-1000001~               |  |
|        | DRW  | DRW                  |        |      |                              |                             |  |
|        | DRX  | DRX                  |        | AY4  |                              |                             |  |

\* Of carburetor identification numbers, only the portions underlined in the example below are used for registration.

BE66K A KC ナ



## Features of each type

- See the following table for the features of each type. (Items in brackets are optional)

| Model<br>Type |       | WB20XH |    |     |     | WB20XH2 |    |     | WB30XH |    |     |     | WB30XH2 |    |     |
|---------------|-------|--------|----|-----|-----|---------|----|-----|--------|----|-----|-----|---------|----|-----|
|               |       | BRX    | DR | DRW | DRX | BRX     | DR | DRX | BRX    | DR | DRW | DRX | BRX     | DR | DRX |
| Oil alert     |       | ●      |    |     | ●   | ●       |    |     | ●      |    |     | ●   | ●       |    | ●   |
| Hose coupling | Ø48.5 | ●      | ●  | ●   | ●   | ●       | ●  | ●   |        |    |     |     |         |    |     |
|               | Ø 76  |        |    |     |     |         |    |     | ●      | ●  | ●   | ●   | ●       | ●  | ●   |

| Model<br>Type |       | WL20XH |     |     | WL30XH |     |     |
|---------------|-------|--------|-----|-----|--------|-----|-----|
|               |       | DR     | DRW | DRX | DR     | DRW | DRX |
| Oil alert     |       |        |     | ●   |        |     | ●   |
| Hose coupling | Ø48.5 | ●      | ●   | ●   |        |     |     |
|               | Ø 76  |        |     |     | ●      | ●   | ●   |



## Fuel hose, general purpose hoses and vinyl hose

- The standard part fuel hose, general purpose hose and vinyl hose may be substituted by the coiled bulk part.
- When ordering the standard part fuel hose, general purpose hose and vinyl hose use the bulk part number written in the parts catalog in brackets ( ) underneath the part name.
- When exchanging the hose, cut and use at the specified length as mentioned in the part name.  
(For the method of cutting the bulk part, and method of filling out orders etc., please refer to the instructions issued with the bulk part.)

### Bulk part number of fuel hose, general purpose hose and vinyl hose.

Example: 9 5 0 0 1 - 7 5 0 0 1 - 5 0 M

Bulk part number:

Refers to the bulk part.

Marking code (fuel hose and general purpose hose)

Change code (Vinyl hose)

Indicates number mark or change sequence, however, the code for the bulk part must be strictly 0 (zero).

Types of code:

- Fuel hose
  - 2: Red outside braid (3 mm inside dia. only)
  - 5: Black inside braid
  - 3: Red (3 mm inside dia. only)
  - 4: Ash gray with red stripe (3 mm inside dia. only)
  - 6: Black

- General hose
  - 1: Ash gray
  - 2: Ash gray
  - 3: Black
  - 5: Black

- Vinyl hose
  - 1: Clear
  - 2: Black
  - 3: Light red
  - 6: Light red
  - 7: Pale black

Lengths:

001: 1 m (standard)  
003: 3 m  
008: 8 m

Application or specification of some parts is not settled.

I.D code: (fuel hose and general purpose hose)

30: 3.0 mm  
35: 3.5 mm  
45: 4.5 mm

50: 5.0 mm  
55: 5.3 mm, 5.5 mm  
65: 6.5 mm

70: 7.0 mm  
75: 7.3 mm, 7.5 mm  
80: 8.0 mm

11: 11 mm  
91: 12 (outside dia. 15) mm  
92: 12 (outside dia. 16) mm

12: 12 (outside dia. 17) mm  
14: 14 mm  
17: 17 mm

ID./OD. code: (vinyl hose)

01: ID. 2.9, OD. 6.8 mm  
03: ID. 3.0, OD. 6.0 mm  
05: ID. 3.5, OD. 6.5 mm  
07: ID. 4.0, OD. 7.0 mm  
08: ID. 4.5, OD. 6.5 mm  
09: ID. 4.5, OD. 8.0 mm

12: ID. 5.0, OD. 7.0 mm  
10: ID. 5.0, OD. 8.0 mm  
11: ID. 5.0, OD. 9.0 mm  
14: ID. 6.0, OD. 9.0 mm  
17: ID. 7.0, OD. 9.0 mm  
19: ID. 7.0, OD. 11.0 mm

21: ID. 8.0, OD. 9.0 mm  
23: ID. 8.0, OD. 12.0 mm  
25: ID. 9.0, OD. 11.0 mm  
27: ID. 9.0, OD. 13.0 mm  
33: ID. 10.0, OD. 14.0 mm  
36: ID. 11.0, OD. 13.0 mm

37: ID. 11.0, OD. 15.0 mm  
38: ID. 12.0, OD. 13.0 mm  
39: ID. 12.0, OD. 14.0 mm  
40: ID. 12.0, OD. 16.0 mm  
43: ID. 13.0, OD. 15.0 mm  
45: ID. 14.0, OD. 18.0 mm

50: ID. 16.0, OD. 19.0 mm  
55: ID. 17.5, OD. 20.5 mm  
60: ID. 22.0, OD. 27.0 mm

Hose type:

- 1: Fuel hose
- 3: Vinyl hose
- 5: General hose

⊙ **CAUTION:** It is **DANGEROUS** to confuse the fuel hose with the general purpose hose or vinyl hose.

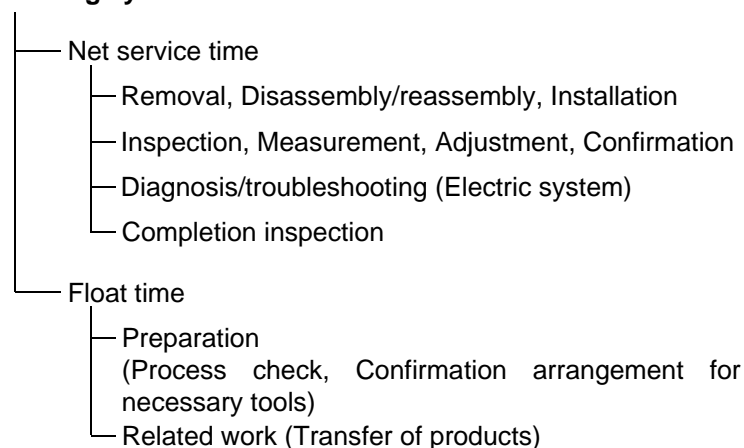
Never use a general purpose hose or vinyl hose in place of a fuel hose or vice versa. Always use the correct bulk part in the parts catalogue, according to the service manual or the instructions issued with the bulk part.



## FLAT RATE SERVICE TIME

Flat rate service time (FRT) means the standard time required to service a product, which is listed in this manual to help the dealers control the actual working process and calculate the service charge by using it as a guide.

### FRT setting system



\* Float time is set by multiplying the net service time by a given coefficient.

### Editorial style

The service items shown in the text are listed with the exchange work time for the repair sales parts as the subject. Other representative service items not using repair parts (removal/installation, adjustment, inspection/measuring, and other work) are listed collectively in the list in the preface, classified according to the work.

### FRT setting standard

- Decimal system (in unit of 0.1) is adopted to set FRT as it is convenient to calculate the wage.  
Example: (0.1) → 6 minutes, (0.2) → 12 minutes  
[Labor cost per hour] x [FRT] = [Wage]
- FRT is set with a hand tool.
- Service items and FRT can be subject to change depending on development of tools and service equipment and improvement in service procedure.



**Work procedure**

- As the work procedure is set with the work time according to the method in the separate Service Manual, refer to this Manual as required.
- Work methods permitting servicing in the shortest time still permitting assurance of safe work and product warranty are used for the setting of service items not listed in the Service Manual.
- Work basically is to be performed by one person, and when two or more people are required, setting is done as the total time for the number of people.
- The set value for the technological level of the workers uses a person with three years of experience in the repair of Honda products as the standard.
- Special tools and service equipment used to set FRT are those specified or recommended in Service Manual.

**Service item whose FRT is not presented**

- Accessories and service parts that are not listed to use in this manual.
- Locations with little aging deterioration or breakage during normal use.
- Service work that can be finished by one touch.
- Service work that is seldom done (i.e. extremely small causes of trouble and service frequency).
- Products and parts whose location for installation differs according to its status of use and application.

\* When FRT is not presented, please calculate wages based on appropriate actual work time.

**Operation not included of FRT**

- Oil and coolant water draining, Waiting time for warming up operation and etc..
- Additional operation that involves removal/installation of standard exterior equipment.
- Indirect time spent for service by visiting the customer, trade-in, and delivery.
- Indirect time required for ordering and delivery of parts.
- Cost for grease, adhesive agent, etc. used for service work.



**Explanation of FRT by using an example**  
**(The example may differ from the actual presented items)**

| Ref.<br>No. | L.O.N.  | (Relative ref. Number)<br>Description                                     | F.R.T. |
|-------------|---------|---|--------|
| ①<br>②      | 1111L1  | ④<br>VALVE, INTAKE .....4.1   | ②      |
| ③           | 1111L1A | ⑥<br>• NOTE: OHV type<br>⑦<br>• Includes: Engine removal and installation | ⑦      |
|             |         | ⑤<br>One head (intake all) add<br>.....1.4                                | ⑤      |

- ① Reference No. of the illustration of part that shows location of the replacement work.
- ② FRT is an abbreviation of Flat Rate Time indicating the standard service time required for the replacement.
- ③ LON is an abbreviation of Labor Operation Number, and it is a classification of the service items by the work unit code.

The same operation code is used regardless of the models.

Standard operation is indicated with 6 digits code, and additional operation is indicated with 7 digits code.

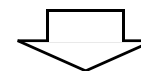
- ④ Indicating the intake valve replacement and FRT4.1.
- ⑤ Indicating FRT1.4 that will be added when additional operation (whole intake side of one cylinder head) is done in association with intake valve replacement.

- ⑥ Indicating work condition or application condition of the service item.
- ⑦ Indicating work contents that are included in the service item.
- ⑧ Indicating a reference No. whose operation and time are the same as FRT4.1 for the intake valve.

(The application range is limited to the service items without an LON setting within a same block.)

**How to refer to the service item by using the sample**  
 (intake valve replacement)

Open to the page of the block where the intake valve's spare part illustration is shown.



Look for the intake valve illustration, and refer to the service item and FRT that agree with the reference No.



Indication mark for the listing of service items that continues to the following page

| Ref. No. | L.O.N. | (Relative ref. Number) Description | F.R.T. |
|----------|--------|------------------------------------|--------|
| 2        | 1111L1 | VALVE, INTAKE .....                | 4.1    |
|          | .      | .                                  | .      |
|          | .      | .                                  | .      |

+

Mark indicated at the last line.

Indication of the block with no setting of FRT

| Ref. No. | L.O.N. | (Relative ref. Number) Description | F.R.T. |
|----------|--------|------------------------------------|--------|
|          |        | NO INFORMATION .....               |        |

#### • LON code system

|          |           |          |           |          |
|----------|-----------|----------|-----------|----------|
| <b>1</b> | <b>11</b> | <b>1</b> | <b>L1</b> | <b>A</b> |
| a        | b         | c        | d         | e        |

- a) Category code..... Engine
- b) Location/function code..... Engine upper
- c) Operation code..... Replace
- d) Operation sequence number (Unit code can be shown with alphabet)
  - ..... Intake valve
  - (No regular rule of code)
- e) Additional code ..... One head (intake all)
  - (No regular rule of code)

|          |           |          |           |          |
|----------|-----------|----------|-----------|----------|
| <b>1</b> | <b>11</b> | <b>1</b> | <b>L1</b> | <b>A</b> |
| a        |           | c        |           |          |

#### a) Category codes and classification

| Code | Category       |
|------|----------------|
| 1    | Engine         |
| 2    | Power drive    |
| 3    | Fuel & Exhaust |
| 4    | Frame & Body   |
| 5    | Steering       |
| 6    | Electrical     |
| 7    | Axle & Brake   |
| 8    | Control system |
| 9    | -              |
| 0    | Attachments    |

#### c) Operation codes and classification

| Code | Operation category                    |
|------|---------------------------------------|
| 1    | Replace, Removal/Installation, Change |
| 2    | Overhaul                              |
| 3    | Adjust, Rotation                      |
| 4    | (Paint-related work: Top-coat)        |
| 5    | Test, Inspect/diagnose, Measurement   |
| 6    | (Overhaul-related work: Rebore)       |
| 7    | (Overhaul-related work: Reseal)       |
| 8    | (Resurface)                           |
| 9    | (Paint-related work: Refinish)        |
| 0    | Repair, Cleaning, Air bleeding        |



Major service items without using spare parts

(1) Removal/Installation, (2) Adjustment,  
(3) Inspection/Masurement, (4) Overhaul, (5) Other work

E: Engine, T: Transmission, D: Drive system,

B: Body and related parts

### (1) Removal/Installation

Set with the parts configuration in the status of being removed from the product.

|   | LON    | DESCRIPTION                                 | FRT |
|---|--------|---|-----|
| E | 1001A1 | <b>ENGINE AND PUMP-REMOVAL/INSTALLATION</b> | 0.2 |

### (2) Adjustment

|   | LON    | DESCRIPTION  | FRT |
|---|--------|--|-----|
| E | 1113A1 | <b>VALVE CLEARANCE-ADJUSTMENT</b><br>NOTE: For 1 product | 0.3 |
|   | 1163A0 | <b>CONTROL, THROTTLE/GOVERNOR-ADJUSTMENT</b>             | 0.2 |
|   | 3113A2 | <b>CARBURETOR IDLE-ADJUSTMENT</b>                        | 0.2 |

### (3) Inspection, Measurement, Cleaning

|   | LON    | DESCRIPTION  | FRT |
|---|--------|--|-----|
| E | 1105A0 | <b>ENGINE OIL-INSPECTION</b>   | 0.1 |
|   | 3120A0 | <b>AIR CLEANER-CLEANING</b><br>INCLUDES: Air cleaner-inspection                            | 0.2 |
|   | 6140A0 | <b>SPARK PLUG-ADJUSTMENT/CLEANING</b><br>INCLUDES: Spark plug check<br>NOTE: For 1 product | 0.2 |

### (4) Overhaul

Work condition: The required Measurements, inspections, adjustments, and cleaning/washing of each part are performed, including the main body removal/installation work and the replacement of defective parts.

|   | LON    | DESCRIPTION  | FRT |
|---|--------|--|-----|
| E | 3112A0 | <b>CARBURETOR-OVERHAUL</b><br>INCLUDES: All necessary adjustment | 0.6 |

### (5) Other work

|   | LON    | DESCRIPTION   | FRT |
|---|--------|---|-----|
| E | 1101E1 | <b>ENGINE OIL-CHANGE</b><br>INCLUDES: Engine oil-inspection | 0.1 |



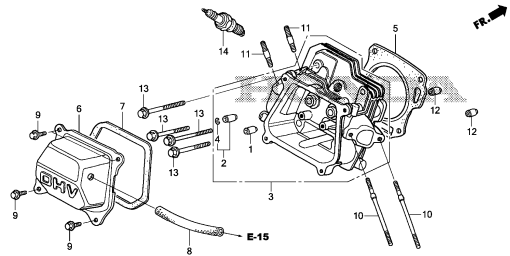
# ENGINE GROUP

**B15**

**E-2**

CYLINDER HEAD

**D 1**

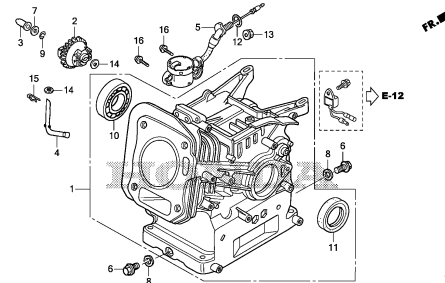


YG73E000

**E-3**

CYLINDER BARREL

**D 2**

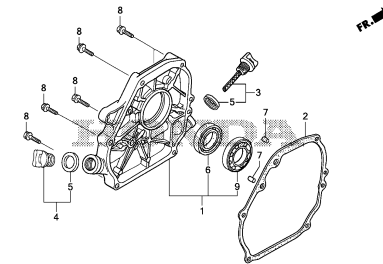


YG73E000

**E-6**

CRANKCASE COVER

**D 3**

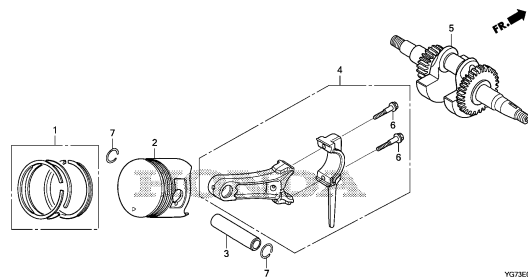


YG73E000

**E-7**

PISTON/CONNECTING ROD/CRANKSHAFT

**D 4**

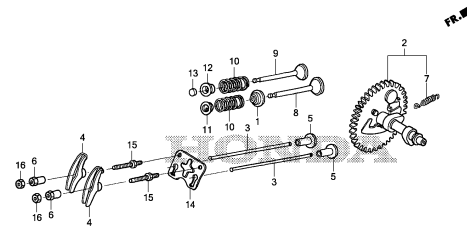


YG73E000

**E-9**

CAMSHAFT

**D 6**

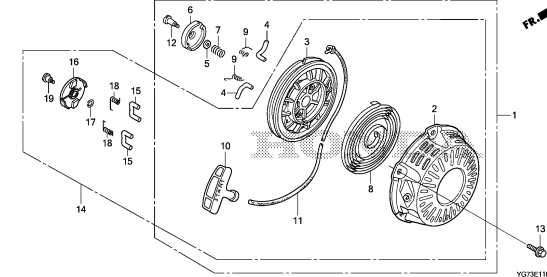


YG73E000

**E-11**

RECOIL STARTER(WB20XH/WB30XH)

**D 8**





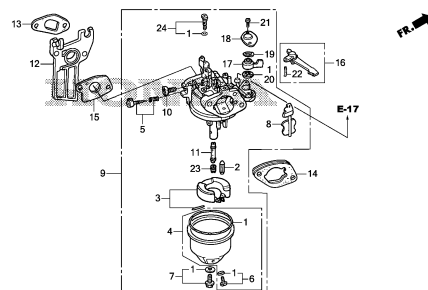
# ENGINE GROUP

**B16**

**E-14**

**CARBURETOR**

**D12**

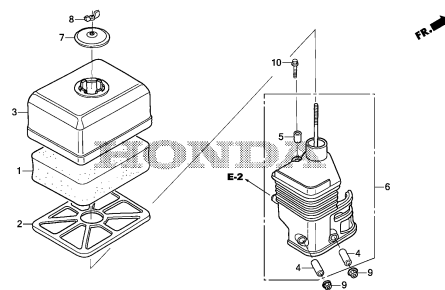


YG73E1400

**E-15**

**AIR CLEANER**

**D14**

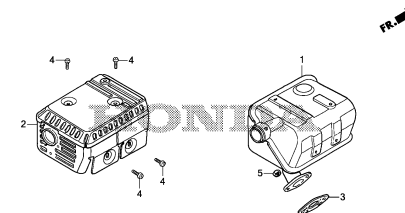


YG73E1500

**E-16**

**MUFFLER**

**D15**

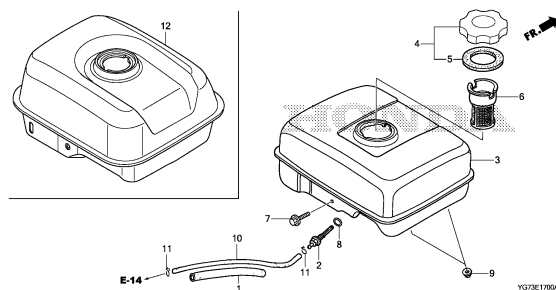


YG73E1600

**E-17**

**FUEL TANK**

**D16**

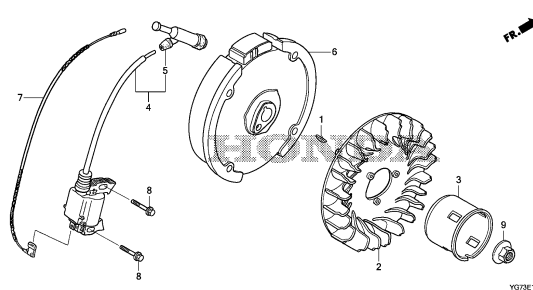


YG73E1700A

**E-19**

**FLYWHEEL/IGNITION COIL**

**E 1**

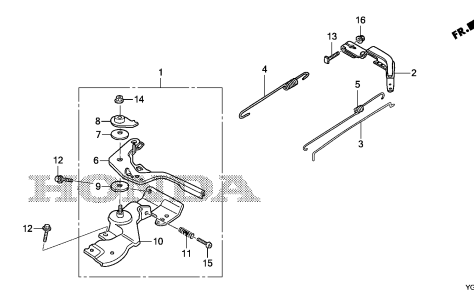


YG73E1900

**E-22**

**CONTROL**

**E 2**

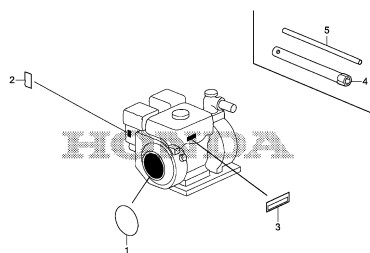


YG73E2200

**E-28**

**LABEL**

**E 3**

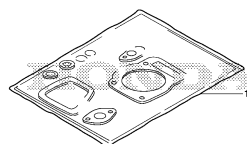


YG73E2800

**EOP-1**

**GASKET KIT**

**E 4**



YG73E100



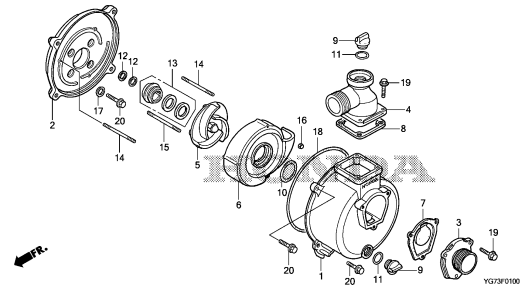
# FRAME GROUP

C 1

F-1

F 1

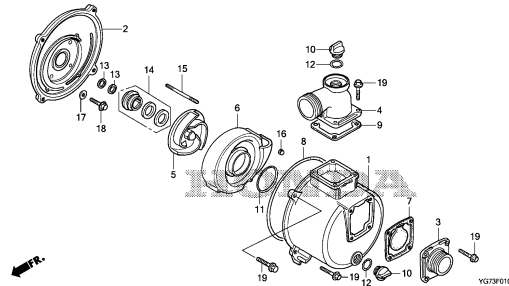
CASING/IMPELLER  
(WB20XH/WB20XH2/WL20XH)



F-1-1

F 2

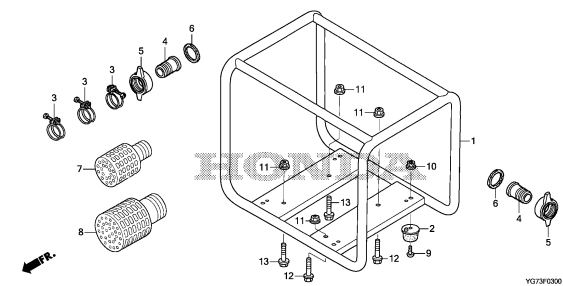
CASING/IMPELLER  
(WB30XH/WB30XH2/WL30XH)



F-3

F 3

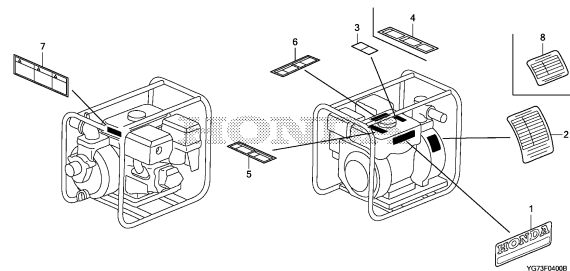
FRAME BED/HOSE COUPLING



F-4

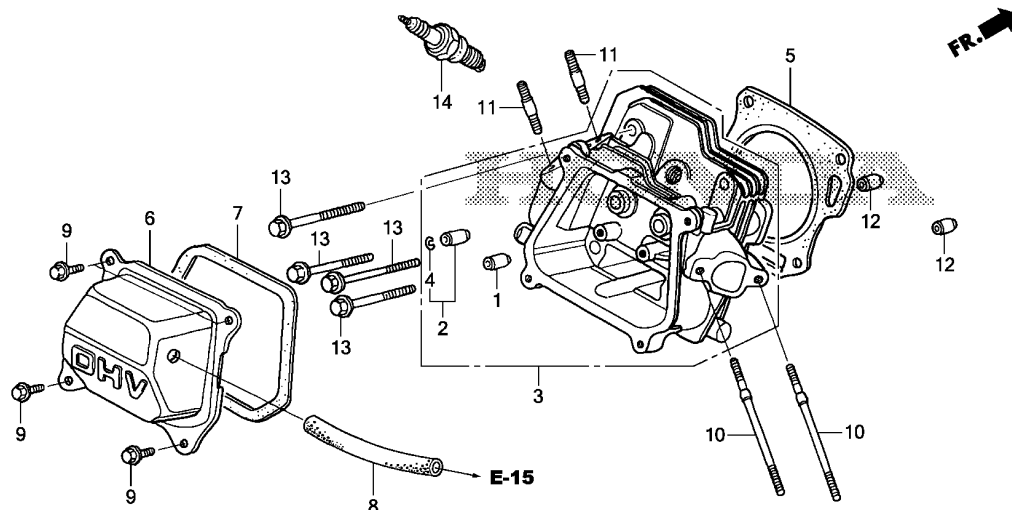
F 4

LABEL



3



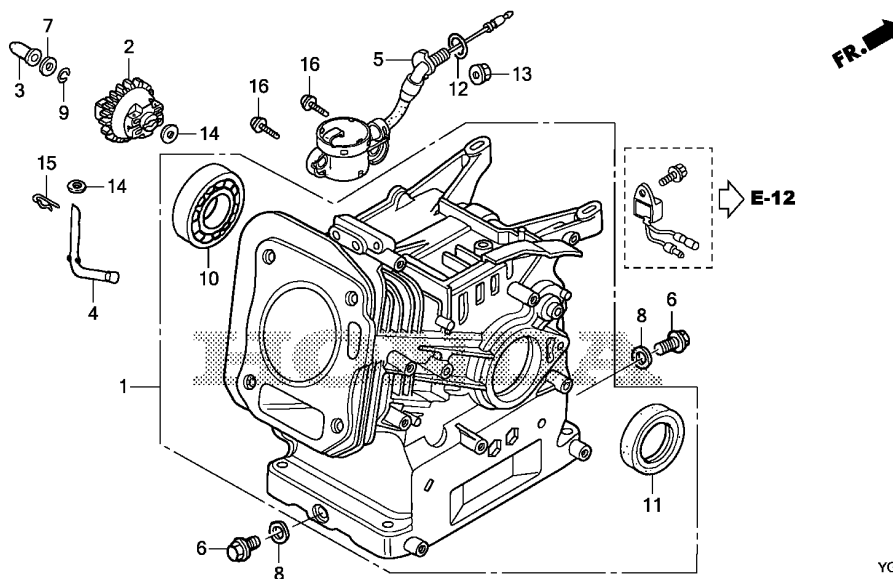


YG73E0200

| Ref. No. | L.O.N.  | (Relative ref. Number)<br>Description                                       | F.R.T. |
|----------|---------|---|--------|
| 1        | 1111E9  | GUIDE, INTAKE VALVE .....<br>.INCLUDES:<br>Valve clearance adjustment       | 0.8    |
|          | 1111E9E | .Replace intake and exhaust<br>all add .....                                | 0.3    |
| 2        | 1111E8  | GUIDE, EXHAUST VALVE .....<br>.INCLUDES:<br>Valve clearance adjustment      | 0.8    |
|          | 1111E8E | .Replace intake and exhaust<br>all add .....                                | 0.3    |
| 3        | 1111N3  | HEAD, CYLINDER .....<br>.INCLUDES: Valve clearance<br>adjustment and reface | 0.9    |
| 5        | 1111N4  | GASKET, CYLINDER HEAD .....   | 0.5    |
| 6        | 1111D5  | CYLINDER HEAD COVER AND/OR<br>PACKING .....                                 | 0.1    |
| 8        | 1111K5  | TUBE, BREATHER .....  | 0.1    |
| 14       | 6141C1  | PLUG, SPARK .....<br>.INCLUDES: Spark plug check                            | 0.1    |

| Ref. No. | Part No.       | Description                                   | Reqd. QTY      |                 |                |                 |                |                | Serial No. | Parts catalogue code |
|----------|----------------|---|----------------|-----------------|----------------|-----------------|----------------|----------------|------------|----------------------|
|          |                |   | WB<br>20<br>XH | WB<br>20<br>XH2 | WB<br>30<br>XH | WB<br>30<br>XH2 | WL<br>20<br>XH | WL<br>30<br>XH |            |                      |
| 1        | 12204-ZE1-306  | GUIDE, IN. VALVE(O.S.) .....                  | 1              | 1               | 1              | 1               | -              | -              |            |                      |
| 2        | 12205-ZE1-315  | GUIDE, EX. VALVE(O.S.) .....                  | 1              | 1               | 1              | 1               | -              | -              |            |                      |
| 3        | 12210-Z1T-010  | HEAD COMP., CYLINDER .....                    | 1              | 1               | 1              | 1               | -              | -              |            |                      |
|          | 12210-Z1T-405  | .....   | -              | -               | -              | -               | 1              | 1              |            |                      |
| 4        | 12216-ZE5-300  | CLIP, VALVE GUIDE .....                       | 1              | 1               | 1              | 1               | -              | -              |            |                      |
| 5        | 12251-Z1T-003  | GASKET, CYLINDER HEAD<br>(GUANGZHOU LEAKLESS) | 1              | 1               | 1              | 1               | -              | -              |            |                      |
|          | 12251-Z1T-701  | GASKET, CYLINDER HEAD<br>(NINGBO SIL GASKET)  | 1              | 1               | 1              | 1               | -              | -              |            |                      |
|          | 12251-ZL0-003  | GASKET, CYLINDER HEAD<br>(NIPPON LEAKLESS)    | -              | -               | -              | -               | 1              | 1              |            |                      |
| 6        | 12310-ZE1-020  | COVER COMP., HEAD .....                       | 1              | 1               | 1              | 1               | 1              | 1              |            |                      |
| 7        | 12312-Z1T-701  | PACKING, HEAD COVER<br>(NINGBO SIL GASKET)    | 1              | 1               | 1              | 1               | 1              | 1              |            |                      |
|          | 12391-ZE1-000  | PACKING, HEAD COVER .....                     | 1              | 1               | 1              | 1               | 1              | 1              |            |                      |
| 8        | 15721-ZH8-000  | TUBE, BREATHER .....                          | 1              | 1               | 1              | 1               | 1              | 1              |            |                      |
| 9        | 90013-883-000  | BOLT, FLANGE, 6X12(CT200) ...                 | 4              | 4               | 4              | 4               | 4              | 4              |            |                      |
| 10       | 90043-ZE1-020  | BOLT, STUD, 6X112 .....                       | 2              | 2               | 2              | 2               | -              | -              |            |                      |
|          | 90043-ZDK-000  | .....   | -              | -               | -              | -               | 2              | 2              |            |                      |
| 11       | 90047-ZE1-000  | BOLT, STUD, 8X32 .....                        | 2              | 2               | 2              | 2               | -              | -              |            |                      |
|          | 90047-ZDK-000  | .....   | -              | -               | -              | -               | 2              | 2              |            |                      |
| 12       | 94301-10160    | DOWEL PIN, 10X16 .....                        | 2              | 2               | 2              | 2               | 2              | 2              |            |                      |
| 13       | 95701-08060-00 | BOLT, FLANGE, 8X60 .....                      | 4              | 4               | 4              | 4               | 4              | 4              |            |                      |
| 14       | 98079-56846    | PLUG, SPARK(BPR6ES)(NGK) ....                 | 1              | 1               | 1              | 1               | 1              | 1              |            |                      |
|          | 98079-56855    | PLUG, SPARK(W20EPR-U)(DENSO)                  | 1              | 1               | 1              | 1               | 1              | 1              |            |                      |





| Ref. No. | L.O.N. | (Relative ref. Number)<br>Description  | F.R.T. |
|----------|--------|--|--------|
| 1        | 1101A0 | BARREL, CYLINDER .....<br>.INCLUDES: Engine removal and installation         | 2.4    |
| 2        | 1161C4 | GOVERNOR ASSEMBLY .....<br>.INCLUDES: Engine removal and installation        | 1.7    |
| 3        | 1161B6 | SLIDER, GOVERNOR .....   | 0.8    |
| 4        | 1161B4 | SHAFT, GOVERNOR ARM .....<br>.INCLUDES: Engine removal and installation      | 1.6    |
| 5        | 6151E8 | SWITCH, OIL LEVEL .....  | 1.0    |
| 10       | 1101A7 | BEARING, CRANKSHAFT :RIGHT ...<br>.INCLUDES: Engine removal and installation | 1.8    |
| 11       | 1101E3 | OIL SEAL, CRANKSHAFT :RIGHT ..<br>.INCLUDES: Engine removal and installation | 1.7    |

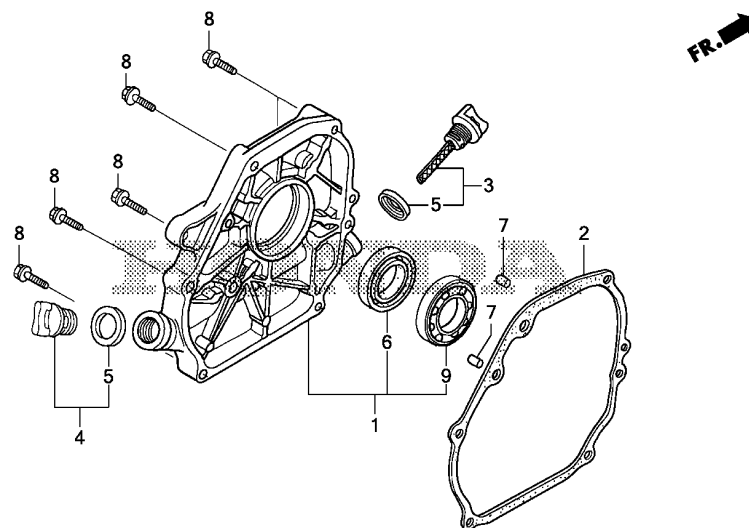
| Ref. No. | Part No.       | Description                         | Reqd. QTY |           |          |           |          |          | Serial No. | Parts catalogue code |
|----------|----------------|-------------------------------------|-----------|-----------|----------|-----------|----------|----------|------------|----------------------|
|          |                |                                     | WB 20 XH  | WB 20 XH2 | WB 30 XH | WB 30 XH2 | WL 20 XH | WL 30 XH |            |                      |
| 1        | 12000-Z1T-406  | BARREL ASSY., CYLINDER .....        | 1         | 1         | 1        | 1         | -        | -        | -----      | BRX,DRX              |
|          | 12000-Z1T-405  | .....                               | 1         | 1         | 1        | 1         | -        | -        | -----      | DR,DRW               |
|          | 12000-ZDK-405  | .....                               | -         | -         | -        | -         | 1        | 1        | -----      | DR,DRW               |
|          | 12000-ZDK-406  | .....                               | -         | -         | -        | -         | 1        | 1        | -----      | DRX                  |
| 2        | 16510-Z1T-000  | GOVERNOR ASSY. ....                 | 1         | 1         | 1        | 1         | 1        | 1        |            |                      |
| 3        | 16531-Z1T-000  | SLIDER, GOVERNOR .....              | 1         | 1         | 1        | 1         | 1        | 1        |            |                      |
| 4        | 16541-Z1T-000  | SHAFT, GOVERNOR ARM .....           | 1         | 1         | 1        | 1         | 1        | 1        |            |                      |
| 5        | 35480-Z0T-003  | SWITCH ASSY., OIL LEVEL .....       | 1         | 1         | 1        | 1         | 1        | 1        | -----      | BRX,DRX              |
| 6        | 90131-ZE1-000  | BOLT, DRAIN PLUG .....              | 2         | 2         | 2        | 2         | 2        | 2        |            |                      |
| 7        | 90451-Z1T-000  | WASHER, THRUST, 6MM .....           | 1         | 1         | 1        | 1         | 1        | 1        |            |                      |
| 8        | 90601-ZE1-000  | WASHER, DRAIN PLUG, 10.2MM ..       | 2         | 2         | 2        | 2         | 2        | 2        |            |                      |
| 9        | 90602-ZE1-000  | CLIP, GOVERNOR HOLDER .....         | 1         | 1         | 1        | 1         | 1        | 1        |            |                      |
| 10       | 91001-Z1T-003  | BEARING, RADIAL BALL, 6205 (NSK)    | 1         | 1         | 1        | 1         | -        | -        |            |                      |
|          | 91001-ZF1-003  | BEARING, RADIAL BALL(6205TMB) (NTN) | 1         | 1         | 1        | 1         | -        | -        |            |                      |
|          | 91001-ZF1-004  | BEARING, RADIAL BALL(6205SH) (KOYO) | 1         | 1         | 1        | 1         | -        | -        |            |                      |
|          | 91001-ZDK-005  | BEARING, RADIAL BALL, 6205 ..       | -         | -         | -        | -         | 1        | 1        |            |                      |
| 11       | 91202-Z1T-003  | OIL SEAL, 25X41X6 .....             | 1         | 1         | 1        | 1         | 1        | 1        |            |                      |
| 12       | 91353-Z7E-003  | O-RING, 14MM .....                  | 1         | 1         | 1        | 1         | 1        | 1        | -----      | BRX,DRX              |
| 13       | 94050-10000    | NUT, FLANGE, 10MM .....             | 1         | 1         | 1        | 1         | 1        | 1        | -----      | BRX,DRX              |
| 14       | 94101-06800    | WASHER, PLAIN, 6MM .....            | 2         | 2         | 2        | 2         | 2        | 2        |            |                      |
| 15       | 94251-08000    | PIN, LOCK, 8MM .....                | 1         | 1         | 1        | 1         | 1        | 1        |            |                      |
| 16       | 95701-06012-00 | BOLT, FLANGE, 6X12 .....            | 2         | 2         | 2        | 2         | 2        | 2        | -----      | BRX,DRX              |



E-6

## CRANKCASE COVER

D 3

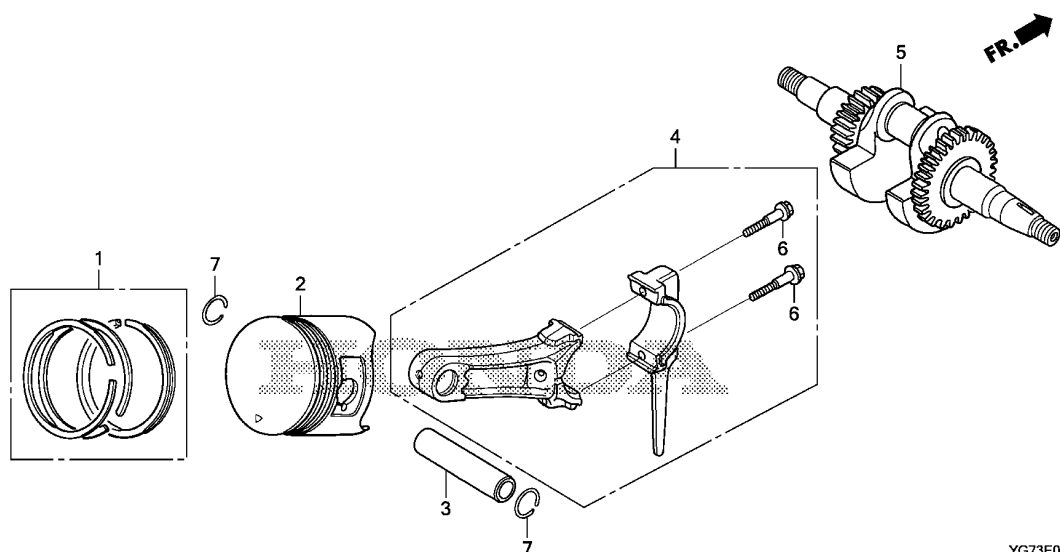


YG73E0600

| Ref. No. | L.O.N. | (Relative ref. Number)<br>Description | F.R.T. |
|----------|--------|---------------------------------------|--------|
| 1        | 1101F1 | COVER, CRANKCASE .....                | 0.6    |
| 2        | 1101E9 | PACKING, CRANKCASE COVER .....        | 0.6    |
| 6        | 1101C0 | OIL SEAL, CRANKSHAFT :LEFT ...        | 0.7    |
| 9        | 1101A5 | BEARING, CRANKSHAFT :LEFT ....        | 0.7    |

| Ref. No. | Part No.       | Description                                | Reqd. QTY |           |          |           |          |          | Serial No. | Parts catalogue code |
|----------|----------------|--|-----------|-----------|----------|-----------|----------|----------|------------|----------------------|
|          |                |  | WB 20 XH  | WB 20 XH2 | WB 30 XH | WB 30 XH2 | WL 20 XH | WL 30 XH |            |                      |
| 1        | 11300-Z1T-630  | COVER ASSY., CRANKCASE .....               | 1         | 1         | 1        | 1         | -        | -        |            |                      |
|          | 11300-ZDK-630  | .....                                      | -         | -         | -        | -         | 1        | 1        |            |                      |
| 2        | 11381-Z1T-701  | PACKING, CASE COVER<br>(NINGBO SIL GASKET) | 1         | 1         | 1        | 1         | -        | -        |            |                      |
|          | 11381-ZH8-801  | PACKING, CASE COVER<br>(NON ASBESTOS)      | 1         | 1         | 1        | 1         | -        | -        |            |                      |
| 3        | 15600-Z1T-000  | CAP ASSY., OIL FILLER .....                | 1         | 1         | 1        | 1         | 1        | 1        |            |                      |
| 4        | 15600-Z1T-600  | CAP ASSY., OIL FILLER .....                | 1         | 1         | 1        | 1         | 1        | 1        |            |                      |
| 5        | 15625-Z1T-000  | PACKING, OIL FILLER CAP .....              | 2         | 2         | 2        | 2         | 2        | 2        |            |                      |
| 6        | 91202-Z1T-003  | OIL SEAL, 25X41X6 .....                    | 1         | 1         | 1        | 1         | 1        | 1        |            |                      |
| 7        | 94301-08140    | DOWEL PIN, 8X14 .....                      | 2         | 2         | 2        | 2         | 2        | 2        |            |                      |
| 8        | 95701-08032-00 | BOLT, FLANGE, 8X32 .....                   | 6         | 6         | 6        | 6         | 6        | 6        |            |                      |
| 9        | 96100-62050-00 | BEARING, RADIAL BALL, 6205 ..              | 1         | 1         | 1        | 1         | -        | -        |            |                      |
|          | 91002-ZDK-005  | .....                                      | -         | -         | -        | -         | 1        | 1        |            |                      |

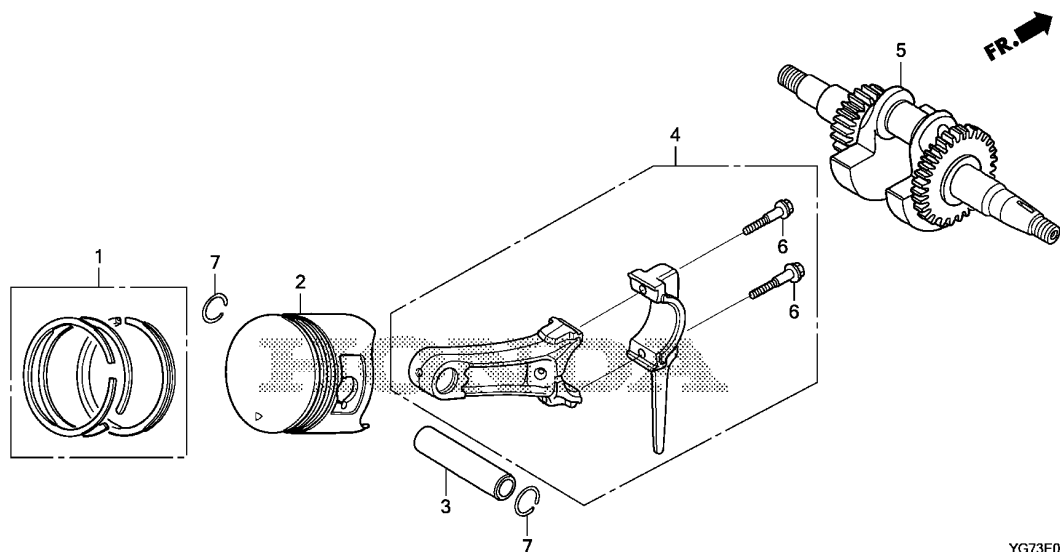




| Ref. No. | L.O.N. | (Relative ref. Number) Description   | F.R.T. |
|----------|--------|--|--------|
| 2        | 1111R1 | (1,3,4) PISTON AND/OR RING SET AND/OR BEARING AND/OR ROD .....<br>.INCLUDES: Engine removal and installation | 1.8    |
| 5        | 1101F0 | CRANKSHAFT .....<br>.INCLUDES: Engine removal and installation   | 1.7    |

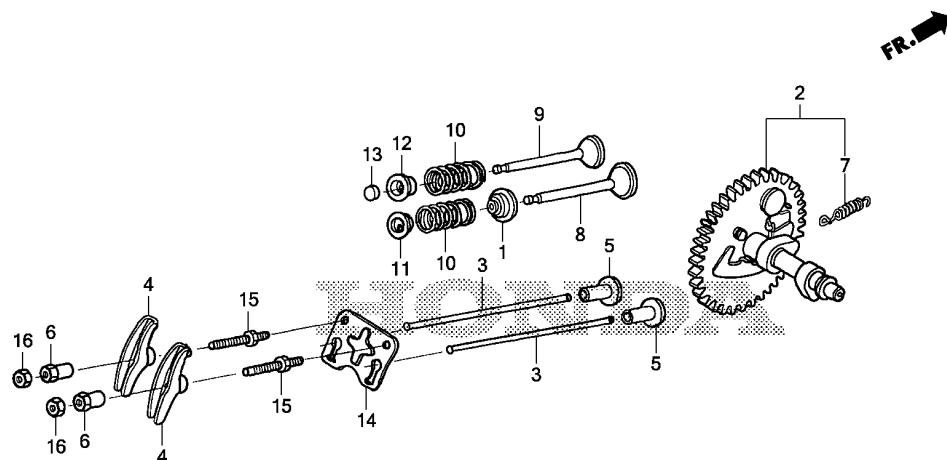
| Ref. No. | Part No.      | Description                                      | Reqd. QTY |           |          |           |          |          | Serial No. | Parts catalogue code |
|----------|---------------|--|-----------|-----------|----------|-----------|----------|----------|------------|----------------------|
|          |               |  | WB 20 XH  | WB 20 XH2 | WB 30 XH | WB 30 XH2 | WL 20 XH | WL 30 XH |            |                      |
| 1        | 13010-Z4K-004 | RING SET, PISTON(STD.) (TPR) -                   | 1         | 1         | 1        | 1         | 1        | 1        |            |                      |
|          | 13010-Z4P-003 | RING SET, PISTON(STD.) (RIKEN)                   | 1         | 1         | 1        | 1         | 1        | 1        |            |                      |
|          | 13011-Z4K-004 | RING SET, PISTON(0.25) (TPR) -                   | (1)       | (1)       | (1)      | (1)       | (1)      | (1)      |            |                      |
|          | 13011-Z4P-003 | RING SET, PISTON(0.25) (RIKEN)                   | (1)       | (1)       | (1)      | (1)       | (1)      | (1)      |            |                      |
|          | 13012-Z4K-004 | RING SET, PISTON(0.50) (TPR) -                   | (1)       | (1)       | (1)      | (1)       | (1)      | (1)      |            |                      |
|          | 13012-Z4P-003 | RING SET, PISTON(0.50) (RIKEN)                   | (1)       | (1)       | (1)      | (1)       | (1)      | (1)      |            |                      |
|          | 13013-Z4K-004 | RING SET, PISTON(0.75) (TPR) -                   | (1)       | (1)       | (1)      | (1)       | (1)      | (1)      |            |                      |
|          | 13013-Z4P-003 | RING SET, PISTON(0.75) (RIKEN)                   | (1)       | (1)       | (1)      | (1)       | (1)      | (1)      |            |                      |
|          | 13010-Z1T-701 | RING SET, PISTON(STD.) (FUJIAN DONGYA MACHINERY) | 1         | -         | 1        | -         | -        | -        |            |                      |
|          | 13011-Z1T-701 | RING SET, PISTON(0.25) (FUJIAN DONGYA MACHINERY) | (1)       | -         | (1)      | -         | -        | -        |            |                      |
|          | 13012-Z1T-701 | RING SET, PISTON(0.50) (FUJIAN DONGYA MACHINERY) | (1)       | -         | (1)      | -         | -        | -        |            |                      |
|          | 13013-Z1T-701 | RING SET, PISTON(0.75) (FUJIAN DONGYA MACHINERY) | (1)       | -         | (1)      | -         | -        | -        |            |                      |
| 2        | 13101-Z1T-010 | PISTON(STD.) (JIALING-HONDA) -                   | 1         | 1         | 1        | 1         | 1        | 1        |            |                      |
|          | 13101-ZH8-020 | PISTON(STD.) .....                               | 1         | 1         | 1        | 1         | -        | -        |            |                      |
|          | 13102-ZH8-020 | PISTON(0.25) .....                               | (1)       | (1)       | (1)      | (1)       | -        | -        |            |                      |
|          | 13103-ZH8-020 | PISTON(0.50) .....                               | (1)       | (1)       | (1)      | (1)       | -        | -        |            |                      |
|          | 13104-ZH8-020 | PISTON(0.75) .....                               | (1)       | (1)       | (1)      | (1)       | -        | -        |            |                      |
|          | 13102-Z1T-000 | PISTON(0.25) .....                               | -         | -         | -        | -         | (1)      | (1)      |            |                      |
|          | 13103-Z1T-000 | PISTON(0.50) .....                               | -         | -         | -        | -         | (1)      | (1)      |            |                      |
|          | 13104-Z1T-000 | PISTON(0.75) .....                               | -         | -         | -        | -         | (1)      | (1)      |            |                      |
| 3        | 13111-Z1T-000 | PIN, PISTON .....                                | 1         | 1         | 1        | 1         | 1        | 1        |            |                      |
| 4        | 13200-Z0T-800 | ROD ASSY., CONNECTING(TH) ...                    | 1         | -         | 1        | -         | -        | -        |            |                      |
|          | 13200-Z1T-600 | ROD ASSY., CONNECTING(JLH) ..                    | -         | 1         | -        | 1         | 1        | 1        |            |                      |
| 5        | 13310-YB4-010 | CRANKSHAFT COMP. ....                            | 1         | -         | 1        | -         | -        | -        | -----      | DR,DRX               |





| Ref.<br>No. | Part No.      | Description                  | Reqd. QTY      |                 |                |                 |                |                | Serial No. | Parts catalogue code |
|-------------|---------------|------------------------------|----------------|-----------------|----------------|-----------------|----------------|----------------|------------|----------------------|
|             |               |                              | WB<br>20<br>XH | WB<br>20<br>XH2 | WB<br>30<br>XH | WB<br>30<br>XH2 | WL<br>20<br>XH | WL<br>30<br>XH |            |                      |
| (5)         | 13310-Z1T-870 | CRANKSHAFT COMP. ....        | 1              | -               | 1              | -               | -              | -              | -----      | BRX,DRW              |
|             |               |                              | -              | 1               | -              | 1               | 1              | 1              |            |                      |
| 6           | 90001-ZE1-000 | BOLT, CONNECTING ROD .....   | 2              | -               | 2              | -               | -              | -              |            |                      |
|             | 90001-Z1T-000 | .....                        | -              | 2               | -              | 2               | 2              | 2              |            |                      |
| 7           | 90551-ZE1-000 | CLIP, PISTON PIN, 18MM ..... | 2              | 2               | 2              | 2               | 2              | 2              |            |                      |



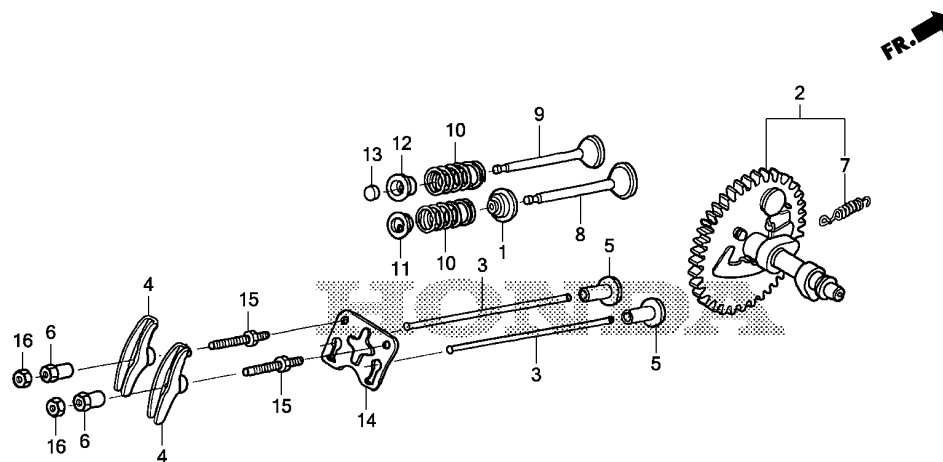


YG73E0900

| Ref. No. | L.O.N.  | (Relative ref. Number)<br>Description                                     | F.R.T. |
|----------|---------|---|--------|
| 1        | 1111K2  | SEAL, INTAKE VALVE STEM .....<br>.INCLUDES:<br>Valve clearance adjustment | 0.6    |
| 2        | 1111C2  | CAMSHAFT .....<br>.INCLUDES:<br>Valve clearance adjustment                | 0.9    |
| 3        | 1111L6  | ROD, PUSH :INTAKE .....<br>.INCLUDES:<br>Valve clearance adjustment       | 0.2    |
|          | 1111L7  | ROD, PUSH :EXHAUST .....<br>.INCLUDES:<br>Valve clearance adjustment      | 0.2    |
|          | 1111L8  | ROD, PUSH :BOTH .....<br>.INCLUDES:<br>Valve clearance adjustment         | 0.3    |
| 4        | 1111A2  | ARM, ROCKER :INTAKE .....<br>.INCLUDES:<br>Valve clearance adjustment     | 0.2    |
|          | 1111A2A | .Replace exhaust rocker arm add .....                                     | 0.1    |
|          | 1111A1  | ARM, ROCKER :EXHAUST .....<br>.INCLUDES:<br>Valve clearance adjustment    | 0.2    |
|          | 1111A1A | .Replace intake rocker arm add .....                                      | 0.1    |
| + 5      | 1111L9  | LIFTER, VALVE :INTAKE .....<br>.INCLUDES:<br>Valve clearance adjustment   | 0.9    |

| Ref. No. | Part No.      | Description                   | Reqd. QTY |           |          |           |          |          | Serial No. | Parts catalogue code |
|----------|---------------|-------------------------------|-----------|-----------|----------|-----------|----------|----------|------------|----------------------|
|          |               |                               | WB 20 XH  | WB 20 XH2 | WB 30 XH | WB 30 XH2 | WL 20 XH | WL 30 XH |            |                      |
| 1        | 12209-ZH8-003 | SEAL, VALVE STEM .....        | 1         | 1         | 1        | 1         | 1        | 1        |            |                      |
| 2        | 14100-Z1T-810 | CAMSHAFT ASSY.(JLH) .....     | 1         | 1         | 1        | 1         | 1        | 1        |            |                      |
| 3        | 14410-ZE1-010 | ROD, PUSH .....               | 2         | 2         | 2        | 2         | 2        | 2        |            |                      |
| 4        | 14431-ZE1-000 | ARM, VALVE ROCKER .....       | 2         | 2         | 2        | 2         | 2        | 2        |            |                      |
| 5        | 14441-ZE1-010 | LIFTER, VALVE .....           | 2         | 2         | 2        | 2         | 2        | 2        |            |                      |
| 6        | 14451-Z7E-000 | PIVOT, ROCKER ARM .....       | 2         | 2         | 2        | 2         | 2        | 2        |            |                      |
| 7        | 14568-ZE1-000 | SPRING, WEIGHT RETURN .....   | 1         | 1         | 1        | 1         | 1        | 1        |            |                      |
| 8        | 14711-ZF1-000 | VALVE, IN. ....               | 1         | 1         | 1        | 1         | 1        | 1        |            |                      |
| 9        | 14721-ZF1-000 | VALVE, EX. ....               | 1         | 1         | 1        | 1         | 1        | 1        |            |                      |
| 10       | 14751-ZF1-000 | SPRING, VALVE .....           | 2         | 2         | 2        | 2         | 2        | 2        |            |                      |
| 11       | 14771-ZE1-000 | RETAINER, IN. VALVE SPRING .. | 1         | 1         | 1        | 1         | 1        | 1        |            |                      |
| 12       | 14773-ZE1-000 | RETAINER, EX. VALVE SPRING .. | 1         | 1         | 1        | 1         | 1        | 1        |            |                      |
| 13       | 14781-ZE1-000 | ROTATOR, VALVE .....          | 1         | 1         | 1        | 1         | 1        | 1        |            |                      |
| 14       | 14791-ZE1-010 | PLATE, PUSH ROD GUIDE .....   | 1         | 1         | 1        | 1         | 1        | 1        |            |                      |
| 15       | 90012-ZE0-010 | BOLT, PIVOT, 8MM .....        | 2         | 2         | 2        | 2         | 2        | 2        |            |                      |
| 16       | 90206-ZE1-000 | NUT, PIVOT ADJUSTING .....    | 2         | 2         | 2        | 2         | 2        | 2        |            |                      |

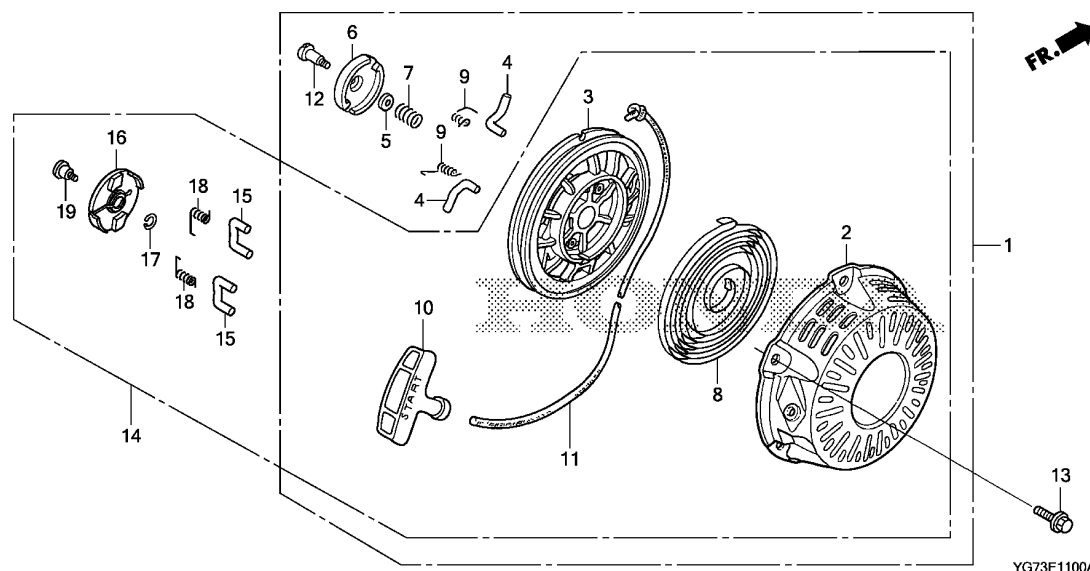




YG73E0900

| Ref. No.  | L.O.N. | (Relative ref. Number)<br>Description               | F.R.T. |
|-----------|--------|---|--------|
| + 5       |        | .INCLUDES:<br>Valve clearance adjustment            |        |
| 1111M0    |        | LIFTER, VALVE :EXHAUST .....                        | 0.9    |
|           |        | .INCLUDES:<br>Valve clearance adjustment            |        |
| 1111M1    |        | LIFTER, VALVE :BOTH .....                           | 0.9    |
|           |        | .INCLUDES:<br>Valve clearance adjustment            |        |
| 8 1111L1  |        | VALVE, INTAKE .....                                 | 0.7    |
|           |        | .INCLUDES: Valve clearance<br>adjustment and reface |        |
| 1111L1E   |        | .Replace intake and exhaust<br>all add .....        | 0.2    |
| 9 1111L0  |        | VALVE, EXHAUST .....                                | 0.7    |
|           |        | .INCLUDES: Valve clearance<br>adjustment and reface |        |
| 1111L0E   |        | .Replace intake and exhaust<br>all add .....        | 0.2    |
| 13 1111J7 |        | ROTATOR, VALVE .....                                | 0.2    |





| Ref. No. | L.O.N. | (Relative ref. Number)<br>Description | F.R.T. |
|----------|--------|---------------------------------------|--------|
| 1        |        | (14)                                  |        |
| 1121B9   |        | STARTER, RECOIL .....                 | 0.1    |
| 3        | 1121B1 | REEL, RECOIL STARTER .....            | 0.3    |
| 4        |        | (9,15,18)                             |        |
| 1121B0   |        | STARTER RATCHET AND/OR SPRING .....   | 0.2    |
| 6        |        | .NOTE: Same time for two units (7,16) |        |
| 1121A4   |        | GUIDE, RATCHET .....                  | 0.2    |
| 8        | 1121B7 | SPRING, RECOIL STARTER RETURN .....   | 0.3    |
| 10       | 1121A3 | GRIP, RECOIL STARTER .....            | 0.1    |
| 11       | 1121B3 | ROPE, RECOIL STARTER .....            | 0.3    |

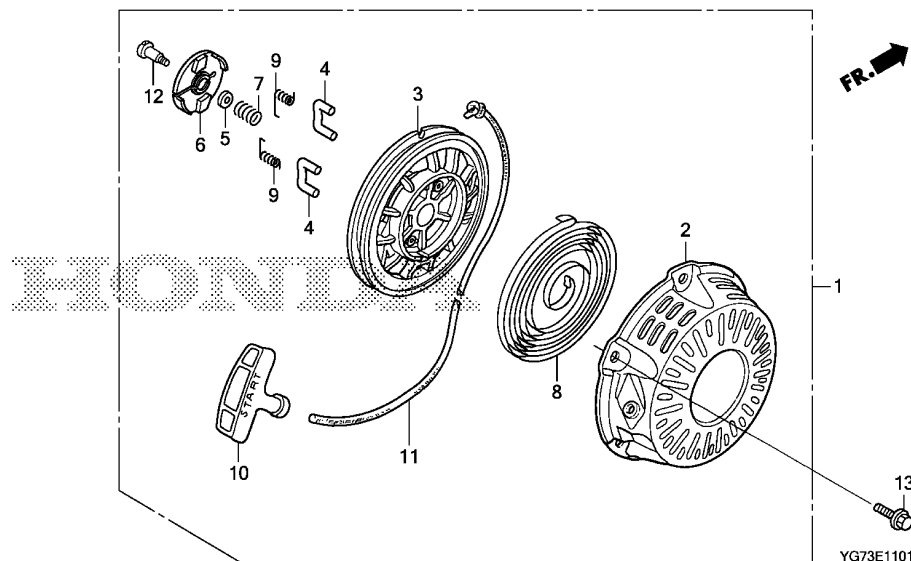
| Ref. No. | Part No.        | Description                    | Reqd. QTY |           |          |           |          |          | Serial No. | Parts catalogue code |
|----------|-----------------|--------------------------------|-----------|-----------|----------|-----------|----------|----------|------------|----------------------|
|          |                 |                                | WB 20 XH  | WB 20 XH2 | WB 30 XH | WB 30 XH2 | WL 20 XH | WL 30 XH |            |                      |
| 1        | 28400-Z0T-003ZB | STARTER ASSY., RECOIL          |           |           |          |           |          |          |            |                      |
|          |                 | *R280*.....POWER RED           | 1         | -         | 1        | -         | -        | -        | -----      | DR,DRX               |
| 2        | 28410-Z1T-701   | CASE COMP., RECOIL STARTER ..  | 1         | -         | 1        | -         | -        | -        | -----      | BRX,DRW              |
|          | 28410-ZH8-003YA | *R280*.....POWER RED           | 1         | -         | 1        | -         | -        | -        | -----      | DR,DRX               |
| 3        | 28421-Z1T-701   | REEL, RECOIL STARTER(BLACK) .. | 1         | -         | 1        | -         | -        | -        | -----      | BRX,DRW              |
|          | 28421-Z0T-003   | REEL, RECOIL STARTER .....     | 1         | -         | 1        | -         | -        | -        | -----      | DR,DRX               |
| 4        | 28422-ZH8-801   | RATCHET, STARTER .....         | 2         | -         | 2        | -         | -        | -        | -----      | DR,DRX               |
| 5        | 28431-ZH8-801   | PLATE, FRICTION .....          | 1         | -         | 1        | -         | -        | -        | -----      | DR,DRX               |
| 6        | 28433-ZH8-801   | GUIDE, RATCHET .....           | 1         | -         | 1        | -         | -        | -        | -----      | DR,DRX               |
| 7        | 28441-ZH8-801   | SPRING, FRICTION .....         | 1         | -         | 1        | -         | -        | -        | -----      | DR,DRX               |
| 8        | 28442-ZH8-003   | SPRING, RECOIL STARTER .....   | 1         | -         | 1        | -         | -        | -        | -----      |                      |
| 9        | 28443-ZH8-801   | SPRING, RETURN .....           | 2         | -         | 2        | -         | -        | -        | -----      | DR,DRX               |
| 10       | 28461-ZH8-013   | KNOB, RECOIL STARTER .....     | 1         | -         | 1        | -         | -        | -        | -----      |                      |
| 11       | 28462-Z1T-701   | ROPE, RECOIL STARTER .....     | 1         | -         | 1        | -         | -        | -        | -----      | BRX,DRW              |
|          | 28462-ZH8-003   | .....                          | 1         | -         | 1        | -         | -        | -        | -----      | DR,DRX               |
| 12       | 90003-ZH8-801   | SCREW, SETTING .....           | 1         | -         | 1        | -         | -        | -        | -----      | DR,DRX               |
| 13       | 90008-Z1T-000   | BOLT, FLANGE, 6X10 .....       | 3         | -         | 3        | -         | -        | -        | -----      |                      |
| 14       | 28400-Z1T-701   | STARTER ASSY., RECOIL .....    | 1         | -         | 1        | -         | -        | -        | -----      | BRX,DRW              |
| 15       | 28422-Z1T-701   | RATCHET, STARTER .....         | 2         | -         | 2        | -         | -        | -        | -----      | BRX,DRW              |
| 16       | 28433-Z1T-701   | GUIDE, RATCHET .....           | 1         | -         | 1        | -         | -        | -        | -----      | BRX,DRW              |
| 17       | 28441-Z1T-701   | SPRING, FRICTION .....         | 1         | -         | 1        | -         | -        | -        | -----      | BRX,DRW              |
| 18       | 28443-Z1T-701   | SPRING, RETURN .....           | 2         | -         | 2        | -         | -        | -        | -----      | BRX,DRW              |
| 19       | 90003-Z1T-701   | SCREW, SETTING .....           | 1         | -         | 1        | -         | -        | -        | -----      | BRX,DRW              |



# E-11-1

# RECOIL STARTER(WB20XH2/WB30XH2)

D 9



| Ref. No. | L.O.N. | (Relative ref. Number)<br>Description | F.R.T. |
|----------|--------|---------------------------------------|--------|
| 1        | 1121B9 | STARTER, RECOIL .....                 | 0.1    |
| 3        | 1121B1 | REEL, RECOIL STARTER .....            | 0.3    |
| 4        |        | (9)                                   |        |
|          | 1121B0 | STARTER RATCHET AND/OR SPRING .....   | 0.2    |
|          |        | .NOTE: Same time for two units (7)    |        |
| 6        |        |                                       |        |
|          | 1121A4 | GUIDE, RATCHET .....                  | 0.2    |
| 8        | 1121B7 | SPRING, RECOIL STARTER RETURN .....   | 0.3    |
| 10       | 1121A3 | GRIP, RECOIL STARTER .....            | 0.1    |
| 11       | 1121B3 | ROPE, RECOIL STARTER .....            | 0.3    |

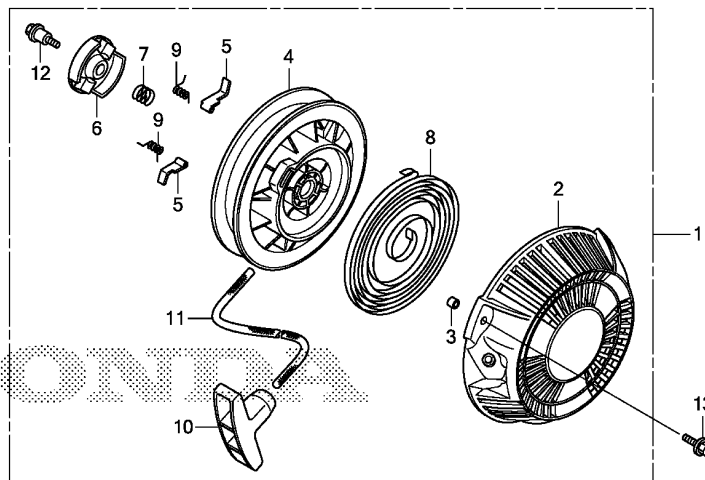
| Ref. No. | Part No.        | Description                  | Reqd. QTY |           |          |           |          |          | Serial No. | Parts catalogue code |
|----------|-----------------|------------------------------|-----------|-----------|----------|-----------|----------|----------|------------|----------------------|
|          |                 |                              | WB 20 XH  | WB 20 XH2 | WB 30 XH | WB 30 XH2 | WL 20 XH | WL 30 XH |            |                      |
| 1        | 28400-Z1T-702ZB | STARTER ASSY., RECOIL        | -         | -         | -        | -         | -        | -        |            |                      |
|          |                 | *R280*.....POWER RED         | -         | 1         | -        | 1         | -        | -        |            |                      |
| 2        | 28410-Z1T-701ZB | CASE COMP., RECOIL STARTER   | -         | -         | -        | -         | -        | -        |            |                      |
|          |                 | *R280*.....POWER RED         | -         | 1         | -        | 1         | -        | -        |            |                      |
| 3        | 28421-Z1T-702   | REEL, RECOIL STARTER(BLACK)  | -         | 1         | -        | 1         | -        | -        |            |                      |
| 4        | 28422-Z1T-701   | RATCHET, STARTER .....       | -         | 2         | -        | 2         | -        | -        |            |                      |
| 5        | 28431-ZH8-801   | PLATE, FRICTION .....        | -         | 1         | -        | 1         | -        | -        |            |                      |
| 6        | 28433-Z1T-702   | GUIDE, RATCHET .....         | -         | 1         | -        | 1         | -        | -        |            |                      |
| 7        | 28441-ZH8-801   | SPRING, FRICTION .....       | -         | 1         | -        | 1         | -        | -        |            |                      |
| 8        | 28442-ZH8-003   | SPRING, RECOIL STARTER ..... | -         | 1         | -        | 1         | -        | -        |            |                      |
| 9        | 28443-Z1T-701   | SPRING, RETURN .....         | -         | 2         | -        | 2         | -        | -        |            |                      |
| 10       | 28461-ZH8-013   | KNOB, RECOIL STARTER .....   | -         | 1         | -        | 1         | -        | -        |            |                      |
| 11       | 28462-Z1T-701   | ROPE, RECOIL STARTER .....   | -         | 1         | -        | 1         | -        | -        |            |                      |
| 12       | 90003-ZH8-801   | SCREW, SETTING .....         | -         | 1         | -        | 1         | -        | -        |            |                      |
| 13       | 90008-Z1T-000   | BOLT, FLANGE, 6X10 .....     | -         | 3         | -        | 3         | -        | -        |            |                      |



# E-11-2

# RECOIL STARTER(WL20XH/WL30XH)

D10



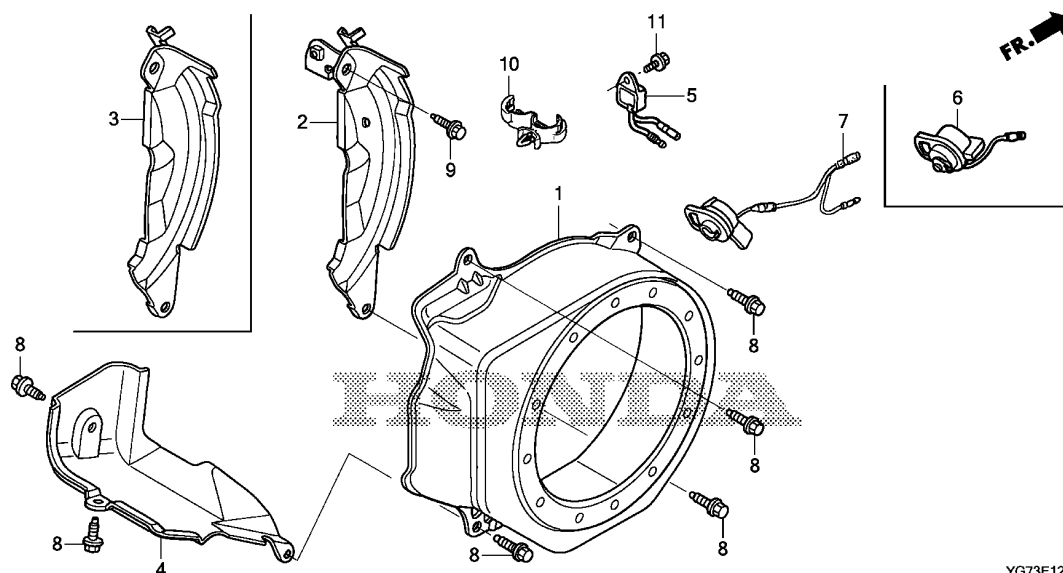
YG73E1102

| Ref. No. | L.O.N. | (Relative ref. Number)<br>Description | F.R.T. |
|----------|--------|---------------------------------------|--------|
| 1        | 1121B9 | STARTER, RECOIL .....                 | 0.1    |
| 4        | 1121B1 | REEL, RECOIL STARTER .....            | 0.3    |
| 5        |        | (9)                                   |        |
|          | 1121B0 | STARTER RATCHET AND/OR SPRING .....   | 0.2    |
|          |        | .NOTE: Same time for two units (7)    |        |
| 6        |        |                                       |        |
|          | 1121A4 | GUIDE, RATCHET .....                  | 0.2    |
| 8        | 1121B7 | SPRING, RECOIL STARTER RETURN .....   | 0.3    |
| 10       | 1121A3 | GRIP, RECOIL STARTER .....            | 0.1    |
| 11       | 1121B3 | ROPE, RECOIL STARTER .....            | 0.3    |

| Ref. No. | Part No.       | Description                  | Reqd. QTY |           |          |           |          |          | Serial No. | Parts catalogue code |
|----------|----------------|------------------------------|-----------|-----------|----------|-----------|----------|----------|------------|----------------------|
|          |                |                              | WB 20 XH  | WB 20 XH2 | WB 30 XH | WB 30 XH2 | WL 20 XH | WL 30 XH |            |                      |
| 1        | 28400-ZDK-003  | STARTER ASSY., RECOIL .....  | -         | -         | -        | -         | 1        | 1        |            |                      |
| 2        | 28414-ZDK-003  | CASE, RECOIL STARTER .....   | -         | -         | -        | -         | 1        | 1        |            |                      |
| 3        | 28415-ZDK-003  | COLLAR, RECOIL STARTER ..... | -         | -         | -        | -         | 3        | 3        |            |                      |
| 4        | 28421-ZDK-003  | REEL, RECOIL STARTER .....   | -         | -         | -        | -         | 1        | 1        |            |                      |
| 5        | 28422-ZDK-003  | RATCHET, STARTER .....       | -         | -         | -        | -         | 2        | 2        |            |                      |
| 6        | 28433-ZDK-003  | GUIDE, RATCHET .....         | -         | -         | -        | -         | 1        | 1        |            |                      |
| 7        | 28441-ZDK-003  | SPRING, FRICTION .....       | -         | -         | -        | -         | 1        | 1        |            |                      |
| 8        | 28442-ZDK-003  | SPRING, RECOIL STARTER ..... | -         | -         | -        | -         | 1        | 1        |            |                      |
| 9        | 28443-ZDK-003  | SPRING, RETURN .....         | -         | -         | -        | -         | 2        | 2        |            |                      |
| 10       | 28461-ZDK-003  | KNOB, RECOIL STARTER .....   | -         | -         | -        | -         | 1        | 1        |            |                      |
| 11       | 28462-ZDK-003  | ROPE, RECOIL STARTER .....   | -         | -         | -        | -         | 1        | 1        |            |                      |
| 12       | 90003-ZDK-003  | SCREW, SETTING .....         | -         | -         | -        | -         | 1        | 1        |            |                      |
| 13       | 95701-06016-00 | BOLT, FLANGE, 6X16 .....     | -         | -         | -        | -         | 3        | 3        |            |                      |

2



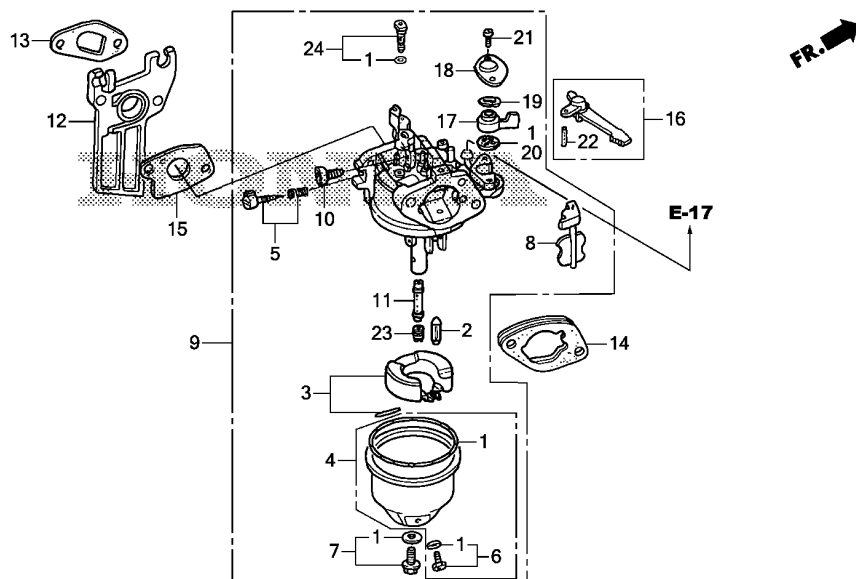


YG73E1200

| Ref. No. | L.O.N. | (Relative ref. Number)<br>Description | F.R.T. |
|----------|--------|---------------------------------------|--------|
| 1        | 1141G8 | COVER, ENGINE COOLING FAN .... (3)    | 0.1    |
| 2        | 1121A7 | PLATE, SIDE .....                     | 0.3    |
| 4        | 4141E0 | SHROUD, ENGINE :LOWER .....           | 0.1    |
| 5        | 6151K3 | ALERT UNIT, OIL .....                 | 0.1    |
| 7        | 6151D9 | SWITCH, ENGINE STOP .....             | 0.2    |

| Ref. No. | Part No.        | Description                   | Reqd. QTY |           |          |           |          |          | Serial No. | Parts catalogue code |
|----------|-----------------|-------------------------------|-----------|-----------|----------|-----------|----------|----------|------------|----------------------|
|          |                 |                               | WB 20 XH  | WB 20 XH2 | WB 30 XH | WB 30 XH2 | WL 20 XH | WL 30 XH |            |                      |
| 1        | 19610-ZE1-010ZP | COVER COMP., FAN              |           |           |          |           |          |          |            |                      |
|          |                 | *R280*.....POWER RED          | 1         | 1         | 1        | 1         | -        | -        |            |                      |
|          | 19610-ZDK-000ZA | *NH31*.....MCKINLEY WHITE     | -         | -         | -        | -         | 1        | 1        |            |                      |
| 2        | 19611-ZH8-810   | PLATE COMP., SIDE(OIL ALERT)  | 1         | 1         | 1        | 1         | 1        | 1        | -----      | BRX,DRX              |
| 3        | 19612-ZH8-000   | PLATE, SIDE(STD.) .....       | 1         | 1         | 1        | 1         | 1        | 1        | -----      | DR,DRW               |
| 4        | 19631-Z1T-000   | SHROUD .....                  | 1         | 1         | 1        | 1         | -        | -        |            |                      |
|          | 19631-ZDK-000   | .....                         | -         | -         | -        | -         | 1        | 1        |            |                      |
| 5        | 34150-ZH7-013   | ALERT UNIT, OIL .....         | 1         | -         | 1        | -         | -        | -        | -----      | DRX                  |
|          | 34150-ZH7-023   | .....                         | 1         | -         | 1        | -         | -        | -        | -----      | BRX                  |
|          |                 | .....                         | -         | 1         | -        | 1         | 1        | 1        | -----      | BRX,DRX              |
| 6        | 35120-Z0D-V81   | SWITCH ASSY., ENGINE STOP ... | 1         | 1         | 1        | 1         | 1        | 1        | -----      | DR,DRW               |
| 7        | 36100-ZF6-P82   | SWITCH ASSY., ENGINE STOP ... | 1         | 1         | 1        | 1         | 1        | 1        | -----      | BRX,DRX              |
| 8        | 90013-883-000   | BOLT, FLANGE, 6X12(CT200) ... | 6         | 6         | 6        | 6         | 6        | 6        |            |                      |
| 9        | 90022-888-010   | BOLT, FLANGE, 6X20(CT200) ... | 1         | 1         | 1        | 1         | 1        | 1        |            |                      |
| 10       | 90601-Z1T-003   | CLIP, HARNESS .....           | 1         | 1         | 1        | 1         | 1        | 1        | -----      | BRX,DRX              |
| 11       | 95701-06008-00  | BOLT, FLANGE, 6X8 .....       | 1         | 1         | 1        | 1         | 1        | 1        | -----      | BRX,DRX              |





| Ref. No. | L.O.N. | (Relative ref. Number) Description        | F.R.T. |
|----------|--------|---|--------|
| 1        | 3111B1 | GASKET SET, CARBURETOR .....              | 0.3    |
| 2        | 3111E1 | FLOAT VALVE SET AND/OR FLOAT SET .....    | 0.3    |
| 5        | 3111D7 | SCREW SET, PILOT .....                    | 0.2    |
| 9        | 3111F3 | CARBURETOR .....                          | 0.2    |
| 12       | 3111C0 | CARBURETOR INSULATOR AND/OR PACKING ..... | 0.2    |
| 13       | 3111C0 | CARBURETOR INSULATOR AND/OR PACKING ..... | 0.2    |
| 15       | 3111C8 | PACKING, CARBURETOR .....                 | 0.2    |
| 16       | 8101F9 | LEVER, CARBURETOR CHOKE .....             | 0.2    |
| 20       | 3101C5 | PACKING, FUEL COCK .....                  | 0.2    |
| 23       | 3111C3 | JET, MAIN .....                           | 0.3    |

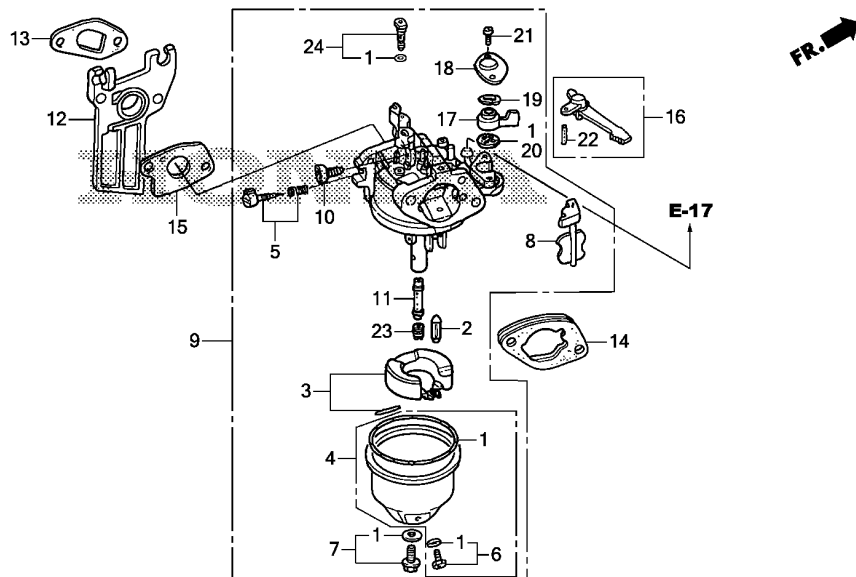
| Ref. No. | Part No.      | Description                            | Reqd. QTY |           |          |           |          |          | Serial No. | Parts catalogue code |
|----------|---------------|--|-----------|-----------|----------|-----------|----------|----------|------------|----------------------|
|          |               |  | WB 20 XH  | WB 20 XH2 | WB 30 XH | WB 30 XH2 | WL 20 XH | WL 30 XH |            |                      |
| 1        | 16010-ZE0-025 | GASKET SET .....                       | 1         | 1         | 1        | 1         | 1        | 1        |            |                      |
| 2        | 16011-ZE0-005 | VALVE SET, FLOAT .....                 | 1         | -         | 1        | -         | -        | -        | -----      | BRX,DR,DRX           |
|          | 16011-Z1T-711 | .....                                  | 1         | -         | 1        | -         | -        | -        | -----      | DRW                  |
|          | 16011-ZE0-005 | .....                                  | -         | 1         | -        | 1         | -        | -        | -----      | BRX,DRX              |
|          | 16011-Z1T-711 | .....                                  | -         | 1         | -        | 1         | -        | -        | -----      | DR                   |
| 3        | 16013-Z0S-B01 | FLOAT SET .....                        | 1         | -         | 1        | -         | -        | -        | -----      | BRX,DR,DRX           |
|          | 16013-Z1T-711 | .....                                  | 1         | -         | 1        | -         | -        | -        | -----      | DRW                  |
|          | 16013-Z0S-B01 | .....                                  | -         | 1         | -        | 1         | -        | -        | -----      | BRX,DRX              |
|          | 16013-Z1T-711 | .....                                  | -         | 1         | -        | 1         | -        | -        | -----      | DR                   |
| 4        | 16015-ZE0-831 | CHAMBER SET, FLOAT .....               | 1         | 1         | 1        | 1         | 1        | 1        |            |                      |
| 5        | 16016-ZH7-W01 | SCREW SET, PILOT .....                 | 1         | 1         | 1        | 1         | 1        | 1        |            |                      |
| 6        | 16024-ZE1-811 | SCREW SET, DRAIN .....                 | 1         | 1         | 1        | 1         | 1        | 1        |            |                      |
| 7        | 16028-ZE0-005 | SCREW SET .....                        | 1         | 1         | 1        | 1         | 1        | 1        |            |                      |
| 8        | 16044-ZE0-005 | CHOKE SET .....                        | 1         | 1         | 1        | 1         | 1        | 1        |            |                      |
| 9        | 16100-Z1T-W71 | CARBURETOR ASSY.(BE66K A) ...          | 1         | -         | 1        | -         | -        | -        | -----      | BRX,DR,DRX           |
|          | 16100-Z1T-701 | CARBURETOR ASSY.(BEA2B A) ...          | 1         | -         | 1        | -         | -        | -        | -----      | DRW                  |
|          | 16100-Z1T-W71 | CARBURETOR ASSY.(BE66K A) ...          | -         | 1         | -        | 1         | -        | -        | -----      | BRX,DRX              |
|          | 16100-Z1T-701 | CARBURETOR ASSY.(BEA2B A) ...          | -         | 1         | -        | 1         | -        | -        | -----      | DR                   |
|          | 16100-ZDK-003 | CARBURETOR ASSY.(BEA2F A) ...          | -         | -         | -        | -         | 1        | 1        |            |                      |
| 10       | 16124-ZE0-005 | SCREW, THROTTLE STOP .....             | 1         | 1         | 1        | 1         | 1        | 1        |            |                      |
| 11       | 16166-ZH8-W60 | NOZZLE, MAIN .....                     | 1         | 1         | 1        | 1         | -        | -        |            |                      |
|          | 16166-ZH8-W50 | .....                                  | -         | -         | -        | -         | 1        | 1        |            |                      |
| 12       | 16211-Z1T-000 | INSULATOR, CARBURETOR(JLH) ..          | 1         | 1         | 1        | 1         | 1        | 1        |            |                      |
| 13       | 16212-Z1T-701 | PACKING, INSULATOR (NINGBO SIL GASKET) | 1         | 1         | 1        | 1         | 1        | 1        |            |                      |



E-14

## CARBURETOR

D13



YG73E1400

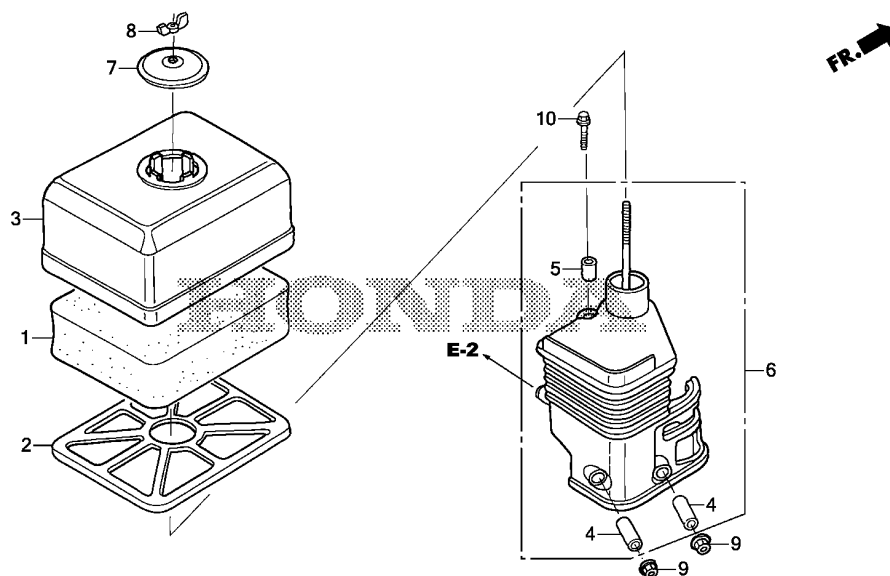
| Ref. No. | Part No.       | Description                                   | Reqd. QTY |           |          |           |          |          | Serial No. | Parts catalogue code |
|----------|----------------|---|-----------|-----------|----------|-----------|----------|----------|------------|----------------------|
|          |                |   | WB 20 XH  | WB 20 XH2 | WB 30 XH | WB 30 XH2 | WL 20 XH | WL 30 XH |            |                      |
| 13)      | 16212-ZH8-800  | PACKING, INSULATOR .....                      | 1         | 1         | 1        | 1         | 1        | 1        |            |                      |
| 14       | 16220-ZE1-020  | SPACER COMP., CARBURETOR ....                 | 1         | 1         | 1        | 1         | 1        | 1        |            |                      |
| 15       | 16221-Z1T-701  | PACKING, CARBURETOR (NINGBO SIL GASKET) ..... | 1         | 1         | 1        | 1         | 1        | 1        |            |                      |
|          | 16221-ZH8-801  | PACKING, CARBURETOR .....                     | 1         | 1         | 1        | 1         | 1        | 1        |            |                      |
| 16       | 16610-Z1T-000  | LEVER COMP., CHOKE(STD.) ....                 | 1         | 1         | 1        | 1         | 1        | 1        |            |                      |
| 17       | 16953-ZE1-812  | LEVER, COCK .....                             | 1         | 1         | 1        | 1         | 1        | 1        |            |                      |
| 18       | 16954-ZE1-812  | PLATE, LEVER SETTING .....                    | 1         | 1         | 1        | 1         | 1        | 1        |            |                      |
| 19       | 16956-ZE1-811  | SPRING, COCK LEVER .....                      | 1         | 1         | 1        | 1         | 1        | 1        |            |                      |
| 20       | 16957-ZE1-812  | PACKING, FUEL COCK .....                      | 1         | 1         | 1        | 1         | 1        | 1        |            |                      |
| 21       | 93500-03006-1H | SCREW, PAN, 3X6 .....                         | 2         | 2         | 2        | 2         | 2        | 2        |            |                      |
| 22       | 94305-20122    | PIN, SPRING, 2X12 .....                       | 1         | 1         | 1        | 1         | 1        | 1        |            |                      |
| 23       | 99101-ZH8-0680 | JET, MAIN, #68 .....                          | (1)       | (1)       | (1)      | (1)       | (1)      | (1)      |            |                      |
|          | 99101-ZH8-0650 | JET, MAIN, #65 .....                          | (1)       | (1)       | (1)      | (1)       | -        | -        |            |                      |
|          | 99101-ZH8-0700 | JET, MAIN, #70 .....                          | 1         | 1         | 1        | 1         | -        | -        |            |                      |
|          | 99101-ZH8-0720 | JET, MAIN, #72 .....                          | -         | -         | -        | -         | (1)      | (1)      |            |                      |
| 24       | 99204-ZE0-0350 | JET SET, PILOT, #35 .....                     | 1         | 1         | 1        | 1         | 1        | 1        |            |                      |



E-15

## AIR CLEANER

D14



| Ref. No. | L.O.N. | (Relative ref. Number) Description  | F.R.T. |
|----------|--------|---|--------|
| 1        | 3121B8 | ELEMENT, AIR CLEANER .....<br>.INCLUDES: Air cleaner element<br>-inspection | 0.1    |
| 6        | 3121B4 | ELBOW, AIR CLEANER .....  | 0.1    |

| Ref. No. | Part No.       | Description                    | Reqd. QTY |           |          |           |          |          | Serial No. | Parts catalogue code |
|----------|----------------|--------------------------------|-----------|-----------|----------|-----------|----------|----------|------------|----------------------|
|          |                |                                | WB 20 XH  | WB 20 XH2 | WB 30 XH | WB 30 XH2 | WL 20 XH | WL 30 XH |            |                      |
| 1        | 17211-ZE1-000  | ELEMENT, AIR CLEANER(SEMI DRY) | 1         | 1         | 1        | 1         | 1        | 1        |            |                      |
| 2        | 17212-ZE1-000  | GRID, AIR CLEANER(SEMI DRY)    | 1         | 1         | 1        | 1         | 1        | 1        |            |                      |
| 3        | 17231-ZE1-000  | COVER, AIR CLEANER(SEMI DRY)   | 1         | 1         | 1        | 1         | 1        | 1        |            |                      |
| 4        | 17238-ZE7-010  | COLLAR, AIR CLEANER .....      | 2         | 2         | 2        | 2         | 2        | 2        |            |                      |
| 5        | 17239-ZE1-000  | COLLAR B, AIR CLEANER .....    | 1         | 1         | 1        | 1         | 1        | 1        |            |                      |
| 6        | 17410-Z1T-000  | ELBOW COMP., AIR CLEANER ....  | 1         | -         | 1        | -         | -        | -        |            |                      |
|          | 17410-Z1T-010  | .....                          | -         | 1         | -        | 1         | 1        | 1        |            |                      |
| 7        | 17421-ZE1-000  | CAP, CLEANER .....             | 1         | 1         | 1        | 1         | 1        | 1        |            |                      |
| 8        | 90325-044-000  | NUT, TOOL BOX SETTING .....    | 1         | 1         | 1        | 1         | 1        | 1        |            |                      |
| 9        | 94050-06000    | NUT, FLANGE, 6MM .....         | 2         | 2         | 2        | 2         | 2        | 2        |            |                      |
| 10       | 95701-06020-00 | BOLT, FLANGE, 6X20 .....       | 1         | 1         | 1        | 1         | 1        | 1        |            |                      |

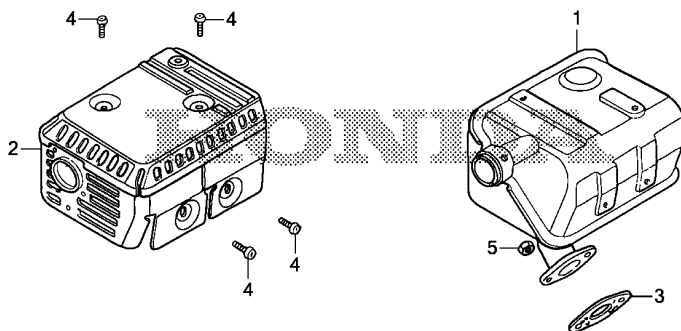
2



E-16

## MUFFLER

D15



YG73E1600

| Ref. No. | L.O.N. | (Relative ref. Number)<br>Description | F.R.T. |
|----------|--------|---------------------------------------|--------|
| 1        | 3131C5 | MUFFLER, EXHAUST .....                | 0.2    |
| 2        | 3131D6 | PROTECTOR, EXHAUST MUFFLER ...        | 0.2    |
| 3        | 3131B4 | GASKET, EXHAUST MUFFLER .....         | 0.2    |

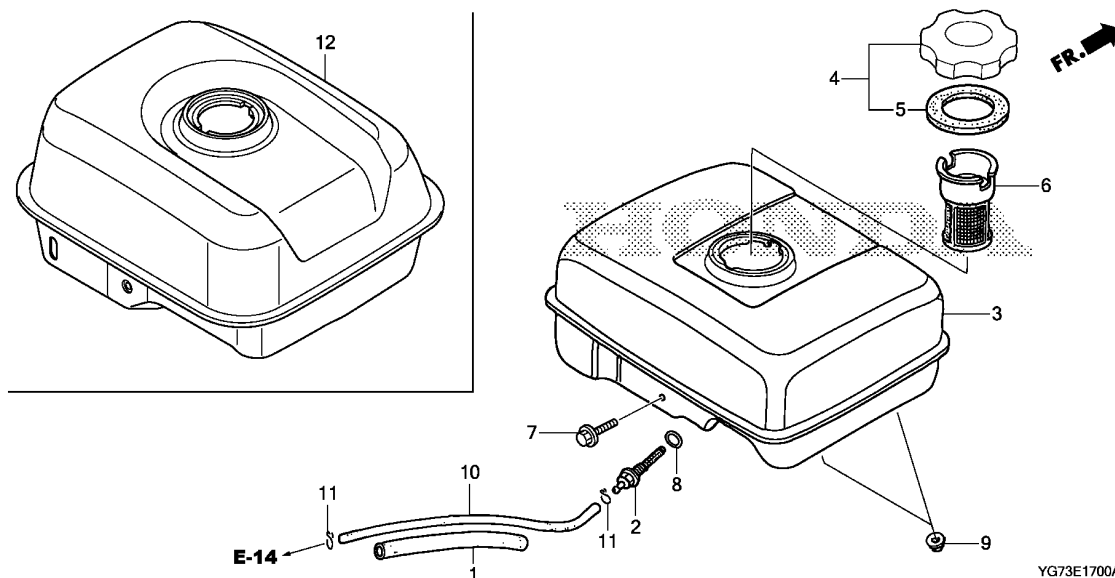
| Ref. No. | Part No.       | Description                             | Reqd. QTY |           |          |           |          |          | Serial No. | Parts catalogue code |
|----------|----------------|---|-----------|-----------|----------|-----------|----------|----------|------------|----------------------|
|          |                |   | WB 20 XH  | WB 20 XH2 | WB 30 XH | WB 30 XH2 | WL 20 XH | WL 30 XH |            |                      |
| 1        | 18310-Z1T-000  | MUFFLER COMP. ....                      | 1         | -         | 1        | -         | -        | -        |            |                      |
|          | 18310-Z1T-010  | .....                                   | -         | 1         | -        | 1         | -        | -        |            |                      |
|          | 18310-ZDK-000  | .....                                   | -         | -         | -        | -         | 1        | 1        |            |                      |
| 2        | 18320-Z1T-010  | PROTECTOR, MUFFLER(STD.) ....           | 1         | 1         | 1        | 1         | -        | -        |            |                      |
|          | 18320-ZDK-000  | PROTECTOR COMP., MUFFLER ....           | -         | -         | -        | -         | 1        | 1        |            |                      |
| 3        | 18381-Z1T-701  | GASKET, MUFFLER<br>(NINGBO SIL GASKET)  | 1         | 1         | 1        | 1         | 1        | 1        |            |                      |
|          | 18381-Z1T-003  | GASKET, MUFFLER<br>(GUANGZHOU LEAKLESS) | 1         | 1         | 1        | 1         | -        | -        |            |                      |
| 4        | 90050-ZE1-000  | SCREW, TAPPING, 5X8 .....               | 4         | 4         | 4        | 4         | 4        | 4        |            |                      |
| 5        | 94001-08000-0S | NUT, HEX., 8MM .....                    | 2         | 2         | 2        | 2         | 2        | 2        |            |                      |



E-17

## FUEL TANK

D16

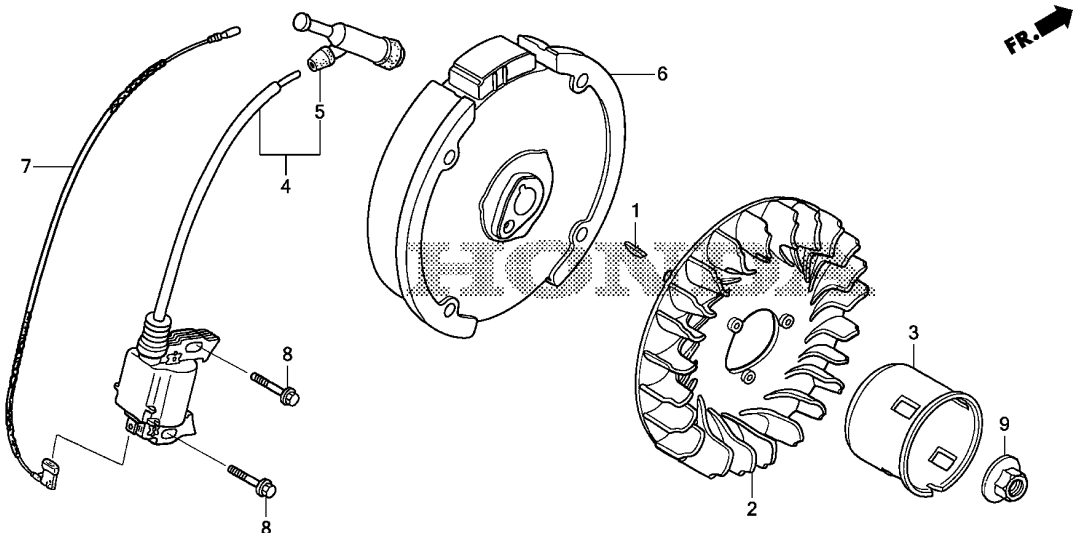


| Ref. No.  | L.O.N. | (Relative ref. Number)<br>Description | F.R.T. |
|-----------|--------|---------------------------------------|--------|
| 2         |        | (8)                                   |        |
| 3101H6    |        | JOINT, FUEL STRAINER .....            | 0.2    |
| 3         |        | (12)                                  |        |
| 3101H7    |        | TANK, FUEL .....                      | 0.2    |
| 4 3101M7  |        | CAP, FUEL FILLER .....                | 0.1    |
| 6 3101A6  |        | FILTER, FUEL .....                    | 0.1    |
| 10 3101F1 |        | TUBE, FUEL TANK .....                 | 0.2    |

| Ref. No. | Part No.        | Description                   | Reqd. QTY |           |          |           |          |          | Serial No. | Parts catalogue code |
|----------|-----------------|-------------------------------|-----------|-----------|----------|-----------|----------|----------|------------|----------------------|
|          |                 |                               | WB 20 XH  | WB 20 XH2 | WB 30 XH | WB 30 XH2 | WL 20 XH | WL 30 XH |            |                      |
| 1        | 16854-ZH8-000   | RUBBER, SUPPORTER(107MM) .... | 1         | 1         | 1        | 1         | 1        | 1        |            |                      |
| 2        | 16955-Z1T-010   | JOINT, FUEL TANK .....        | 1         | 1         | 1        | 1         | 1        | 1        |            |                      |
| 3        | 17510-ZE1-030ZA | TANK COMP., FUEL              |           |           |          |           |          |          |            |                      |
|          | 17510-ZE1-030ZN | *NH31*.....MCKINLEY WHITE     | 1         | -         | 1        | -         | -        | -        |            |                      |
| 4        | 17620-Z1T-800   | *R280*.....POWER RED          | -         | 1         | -        | 1         | -        | -        |            |                      |
|          |                 | CAP COMP., FUEL FILLER        |           |           |          |           |          |          |            |                      |
|          |                 | (CHROME PLATED)(TOYOSHA)      | 1         | 1         | 1        | 1         | 1        | 1        |            |                      |
| 5        | 17631-Z1T-800   | PACKING, FUEL FILLER CAP      |           |           |          |           |          |          |            |                      |
|          |                 | (39X62X3)(TOYOSHA)            | 1         | 1         | 1        | 1         | 1        | 1        |            |                      |
| 6        | 17672-ZE2-W01   | FILTER, FUEL .....            | (1)       | (1)       | (1)      | (1)       | (1)      | (1)      |            |                      |
| 7        | 90004-Z1T-000   | BOLT, FLANGE, 6X29 .....      | 1         | 1         | 1        | 1         | 1        | 1        |            |                      |
| 8        | 91353-671-004   | O-RING, 14MM(NOK) .....       | 1         | 1         | 1        | 1         | 1        | 1        |            |                      |
| 9        | 94050-06000     | NUT, FLANGE, 6MM .....        | 2         | 2         | 2        | 2         | 2        | 2        |            |                      |
| 10       | 95001-45140-40  | TUBE, FUEL, 4.5X140           |           |           |          |           |          |          |            |                      |
|          |                 | (95001-45001-60M)             | 1         | 1         | 1        | 1         | 1        | 1        |            |                      |
| 11       | 95002-02080     | CLIP, TUBE(B8) .....          | 2         | 2         | 2        | 2         | 2        | 2        |            |                      |
| 12       | 17510-ZDK-000ZB | TANK COMP., FUEL              |           |           |          |           |          |          |            |                      |
|          |                 | *R280*.....POWER RED          | -         | -         | -        | -         | 1        | 1        |            |                      |

2

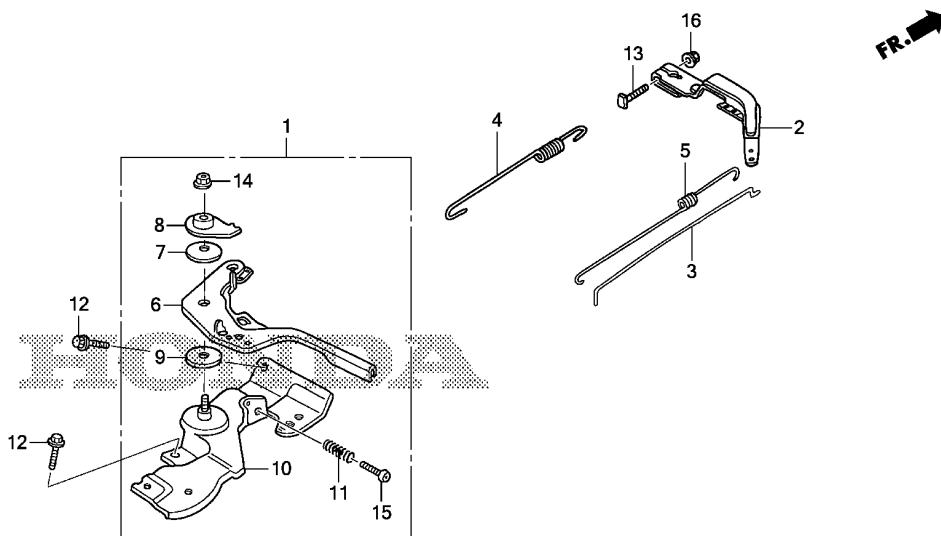




| Ref. No. | L.O.N. | (Relative ref. Number)<br>Description | F.R.T. |
|----------|--------|---------------------------------------|--------|
| 2        | 1141G7 | FAN, ENGINE COOLING .....             | 0.2    |
| 3        | 1121A9 | PULLEY, RECOIL STARTER .....          | 0.2    |
| 4        | 6141A5 | COIL, IGNITION(ONE) .....             | 0.3    |
| 5        | 6141B8 | TERMINAL, HIGH TENSION .....          | 0.1    |
| 6        | 2161B5 | FLYWHEEL .....                        | 0.3    |
| 7        | 6111B3 | CORD, STOP SWITCH .....               | 0.3    |

| Ref. No. | Part No.      | Description                       | Reqd. QTY |           |          |           |          |          | Serial No. | Parts catalogue code |
|----------|---------------|-----------------------------------|-----------|-----------|----------|-----------|----------|----------|------------|----------------------|
|          |               |                                   | WB 20 XH  | WB 20 XH2 | WB 30 XH | WB 30 XH2 | WL 20 XH | WL 30 XH |            |                      |
| 1        | 13331-357-000 | KEY, SPECIAL WOODRUFF, 25X18      | 1         | 1         | 1        | 1         | 1        | 1        |            |                      |
| 2        | 19511-Z1T-000 | FAN, COOLING .....                | 1         | 1         | 1        | 1         | 1        | 1        |            |                      |
| 3        | 28451-Z1T-000 | PULLEY, STARTER .....             | 1         | -         | 1        | -         | -        | -        | -----      | DR,DRX               |
|          | 28451-Z1T-700 | .....                             | 1         | -         | 1        | -         | -        | -        | -----      | BRX,DRW              |
|          | 28451-ZDK-003 | .....                             | -         | 1         | -        | 1         | -        | -        |            |                      |
| 4        | 30500-Z1T-023 | COIL ASSY., IGNITION .....        | 1         | 1         | 1        | 1         | -        | -        |            |                      |
|          | 30500-ZDK-004 | .....                             | -         | -         | -        | -         | 1        | 1        |            |                      |
| 5        | 30700-Z1T-003 | CAP ASSY., NOISE SUPPRESSOR ..... | 1         | 1         | 1        | 1         | -        | -        |            |                      |
|          | 30700-ZDK-004 | .....                             | -         | -         | -        | -         | 1        | 1        |            |                      |
| 6        | 31110-Z1T-003 | FLYWHEEL COMP.(KOKUSAN) .....     | 1         | 1         | 1        | 1         | -        | -        |            |                      |
|          | 31110-Z1T-004 | FLYWHEEL COMP.(YUXIN) .....       | -         | 1         | -        | 1         | 1        | 1        |            |                      |
| 7        | 36101-ZE1-010 | CORD, STOP SWITCH(370MM) .....    | 1         | 1         | 1        | 1         | -        | -        |            |                      |
|          | 32195-ZDK-004 | CORD, STOP SWITCH .....           | -         | -         | -        | -         | 1        | 1        |            |                      |
| 8        | 90121-952-000 | BOLT, FLANGE, 6X25(CT200) .....   | 2         | 2         | 2        | 2         | 2        | 2        |            |                      |
| 9        | 90201-21T-000 | NUT, SPECIAL, 14MM .....          | 1         | 1         | 1        | 1         | 1        | 1        |            |                      |





YG73E2200

| Ref. No. | L.O.N. | (Relative ref. Number)<br>Description | F.R.T. |
|----------|--------|---------------------------------------|--------|
| 1        | 1161A5 | CONTROL, THROTTLE/GOVERNOR ...        | 0.2    |
| 2        | 1161A0 | ARM, GOVERNOR .....                   | 0.2    |
| 3        | 1161B1 | ROD, GOVERNOR .....                   | 0.3    |
| 4        | 1161C5 | SPRING, GOVERNOR .....                | 0.2    |
| 5        | 1161C2 | SPRING, THROTTLE RETURN .....         | 0.3    |

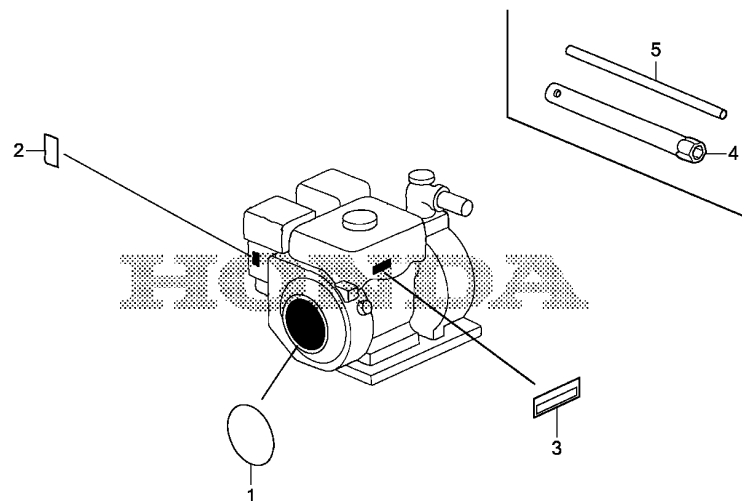
| Ref. No. | Part No.       | Description                   | Reqd. QTY |           |          |           |          |          | Serial No. | Parts catalogue code |
|----------|----------------|-------------------------------|-----------|-----------|----------|-----------|----------|----------|------------|----------------------|
|          |                |                               | WB 20 XH  | WB 20 XH2 | WB 30 XH | WB 30 XH2 | WL 20 XH | WL 30 XH |            |                      |
| 1        | 16500-Z1T-000  | CONTROL ASSY. ....            | 1         | 1         | 1        | 1         | 1        | 1        |            |                      |
| 2        | 16551-ZE0-010  | ARM, GOVERNOR .....           | 1         | 1         | 1        | 1         | 1        | 1        |            |                      |
| 3        | 16555-ZE1-000  | ROD, GOVERNOR .....           | 1         | 1         | 1        | 1         | 1        | 1        |            |                      |
| 4        | 16561-ZE1-020  | SPRING, GOVERNOR .....        | 1         | 1         | 1        | 1         | 1        | 1        |            |                      |
| 5        | 16562-ZE1-020  | SPRING, THROTTLE RETURN ..... | 1         | 1         | 1        | 1         | 1        | 1        |            |                      |
| 6        | 16571-Z1T-000  | LEVER, CONTROL .....          | 1         | 1         | 1        | 1         | 1        | 1        |            |                      |
| 7        | 16574-ZE1-000  | SPRING, LEVER .....           | 1         | 1         | 1        | 1         | 1        | 1        |            |                      |
| 8        | 16575-ZH8-000  | WASHER, CONTROL LEVER .....   | 1         | 1         | 1        | 1         | 1        | 1        |            |                      |
| 9        | 16578-ZE1-000  | SPACER, CONTROL LEVER .....   | 1         | 1         | 1        | 1         | 1        | 1        |            |                      |
| 10       | 16580-ZH8-030  | BASE COMP., CONTROL .....     | 1         | 1         | 1        | 1         | 1        | 1        |            |                      |
| 11       | 16584-883-300  | SPRING, CONTROL ADJUSTING ... | 1         | 1         | 1        | 1         | 1        | 1        |            |                      |
| 12       | 90013-883-000  | BOLT, FLANGE, 6X12(CT200) ... | 2         | 2         | 2        | 2         | 2        | 2        |            |                      |
| 13       | 90015-ZE5-010  | BOLT, GOVERNOR ARM .....      | 1         | 1         | 1        | 1         | 1        | 1        |            |                      |
| 14       | 90114-SA0-000  | NUT, SELF-LOCK, 6MM .....     | 1         | 1         | 1        | 1         | 1        | 1        |            |                      |
|          | 90202-Z1T-000  | .....                         | 1         | 1         | 1        | 1         | 1        | 1        |            |                      |
| 15       | 93500-05025-0A | SCREW, PAN, 5X25 .....        | 1         | 1         | 1        | 1         | 1        | 1        |            |                      |
| 16       | 94050-06000    | NUT, FLANGE, 6MM .....        | 1         | 1         | 1        | 1         | 1        | 1        |            |                      |



E-28

LABEL

E 3



YG73E2800

Ref. L.O.N. (Relative ref. Number)  
No. Description F.R.T.

NO INFORMATION .....

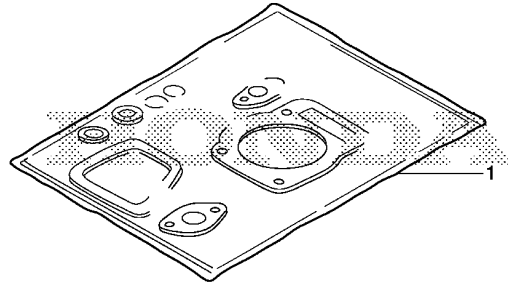
| Ref.<br>No. | Part No.      | Description                   | Reqd. QTY      |                 |                |                 |                |                | Serial No. | Parts catalogue code |
|-------------|---------------|-------------------------------|----------------|-----------------|----------------|-----------------|----------------|----------------|------------|----------------------|
|             |               |                               | WB<br>20<br>XH | WB<br>20<br>XH2 | WB<br>30<br>XH | WB<br>30<br>XH2 | WL<br>20<br>XH | WL<br>30<br>XH |            |                      |
| 1           | 87521-ZH8-040 | EMBLEM(GX160) .....           | 1              | 1               | 1              | 1               | -              | -              |            |                      |
|             | 87521-ZDK-000 | EMBLEM(GP160) .....           | -              | -               | -              | -               | 1              | 1              |            |                      |
| 2           | 87528-ZE1-810 | MARK, CHOKE .....             | 1              | 1               | 1              | 1               | 1              | 1              |            |                      |
| 3           | 87532-ZH8-810 | MARK, OIL ALERT(ENGLISH) .... | 1              | 1               | 1              | 1               | 1              | 1              | -----      | DRX                  |
|             | 87530-Z15-T10 | LABEL, OIL ALERT .....        | 1              | 1               | 1              | 1               | -              | -              | -----      | BRX                  |
| 4           | 89218-ZE1-000 | WRENCH COMP., SPARK PLUG .... | 1              | 1               | 1              | 1               | 1              | 1              |            |                      |
| 5           | 89219-805-000 | HANDLE, BOX WRENCH .....      | 1              | 1               | 1              | 1               | 1              | 1              |            |                      |



EOP-1

## GASKET KIT

E 4



YG73X0100

| Ref. No. | L.O.N. | (Relative ref. Number)<br>Description | F.R.T. |
|----------|--------|---------------------------------------|--------|
|----------|--------|---------------------------------------|--------|

NO INFORMATION .....

| Ref. No. | Part No.      | Description      | Reqd. QTY |     |    |     |    |    | Serial No. | Parts catalogue code |
|----------|---------------|------------------|-----------|-----|----|-----|----|----|------------|----------------------|
|          |               |                  | WB        | WB  | WB | WB  | WL | WL |            |                      |
|          |               |                  | 20        | 20  | 30 | 30  | 20 | 30 |            |                      |
|          |               |                  | XH        | XH2 | XH | XH2 | XH | XH |            |                      |
| 1        | 06111-ZDK-000 | GASKET KIT ..... | -         | -   | -  | -   | 1  | 1  |            |                      |

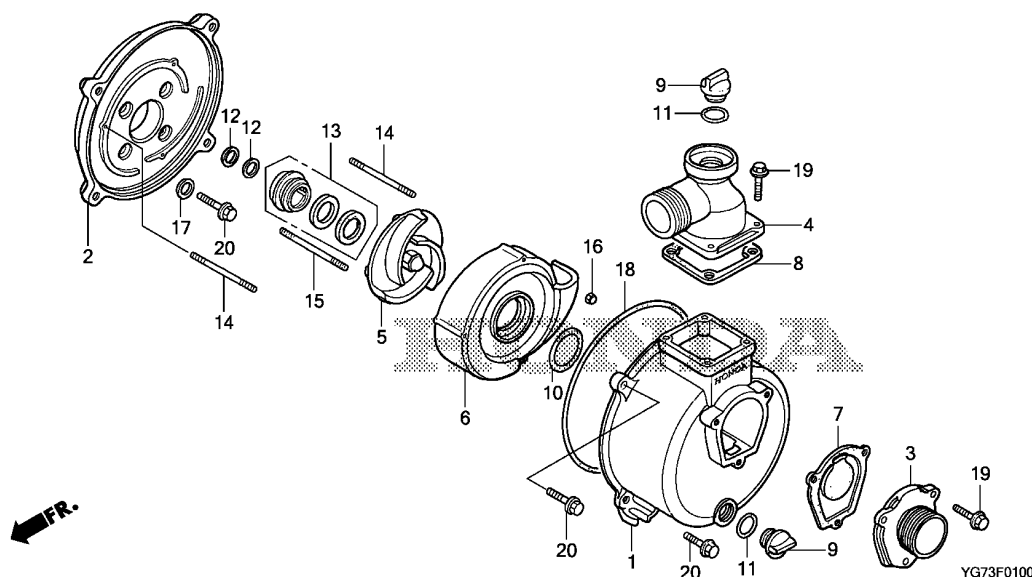
2



F-1

## CASING/IMPELLER(WB20XH/WB20XH2/WL20XH)

F 1



| Ref. No. | L.O.N. | (Relative ref. Number)<br>Description | F.R.T. |
|----------|--------|---------------------------------------|--------|
| 1        |        | (10,18)                               |        |
| 2151G6   |        | CASING, WATER PUMP .....              | 0.3    |
| 2        |        | COVER, CASING :RIGHT .....            | 0.5    |
| 4        |        | (8)                                   |        |
| 2151H2   |        | PIPE, CASING :OUTLET .....            | 0.1    |
| 5        |        | IMPELLER, CASING .....                | 0.3    |
| 6        |        | CASE, CASING VOLUTE .....             | 0.3    |
| 7        |        | VALVE, CASING CHECK .....             | 0.1    |
| 13       |        | SEAL, CASING MECHANICAL .....         | 0.5    |

| Ref. No. | Part No.       | Description                | Reqd. QTY |           |          |           |          |          | Serial No. | Parts catalogue code |
|----------|----------------|----------------------------|-----------|-----------|----------|-----------|----------|----------|------------|----------------------|
|          |                |                            | WB 20 XH  | WB 20 XH2 | WB 30 XH | WB 30 XH2 | WL 20 XH | WL 30 XH |            |                      |
| 1        | 78101-YG7-000  | CASING .....               | 1         | -         | -        | -         | -        | -        |            |                      |
|          | 78101-YG7-A30  | .....                      | -         | 1         | -        | -         | 1        | -        |            |                      |
| 2        | 78102-YG3-000  | COVER, CASING .....        | 1         | -         | -        | -         | -        | -        |            |                      |
|          | 78102-YG7-A30  | .....                      | -         | 1         | -        | -         | 1        | -        |            |                      |
| 3        | 78103-YG3-000  | INLET(PF) .....            | 1         | 1         | -        | -         | 1        | -        |            |                      |
| 4        | 78104-YG3-000  | OUTLET(PF) .....           | 1         | 1         | -        | -         | 1        | -        |            |                      |
| 5        | 78106-YB3-000  | IMPELLER .....             | 1         | -         | -        | -         | -        | -        |            |                      |
|          | 78106-YG7-A30  | .....                      | -         | 1         | -        | -         | 1        | -        |            |                      |
| 6        | 78107-YB3-K10  | CASE, VOLUTE .....         | 1         | -         | -        | -         | -        | -        |            |                      |
|          | 78107-YG7-A30  | .....                      | -         | 1         | -        | -         | 1        | -        |            |                      |
| 7        | 78110-YB3-000  | VALVE, IN. ....            | 1         | 1         | -        | -         | 1        | -        |            |                      |
| 8        | 78114-YB3-000  | PACKING, OUTLET .....      | 1         | 1         | -        | -         | 1        | -        |            |                      |
| 9        | 78117-YB3-K10  | CAP, FILLER .....          | 2         | 2         | -        | -         | 2        | -        |            |                      |
| 10       | 78118-YG7-003  | O-RING, 49X5.7 .....       | 1         | -         | -        | -         | -        | -        |            |                      |
|          | 91351-YG7-A30  | O RING, 53X5.7 .....       | -         | 1         | -        | -         | 1        | -        |            |                      |
| 11       | 78118-YG8-003  | RING, SEAL(B) .....        | 2         | 2         | -        | -         | 2        | -        |            |                      |
| 12       | 78122-YB3-000  | SHIM, ADJUSTER .....       | N         | N         | -        | -         | N        | -        |            |                      |
| 13       | 78130-YB4-004  | SEAL, MECHANICAL .....     | 1         | 1         | -        | -         | 1        | -        |            |                      |
| 14       | 90034-402-000  | BOLT, STUD, 6X50 .....     | 2         | 2         | -        | -         | 2        | -        |            |                      |
| 15       | 90043-YB4-000  | BOLT, STUD, 6X50 .....     | 1         | -         | -        | -         | -        | -        |            |                      |
|          | 90034-402-000  | .....                      | -         | 1         | -        | -         | 1        | -        |            |                      |
| 16       | 90281-YB4-000  | NUT, CAP, 6MM .....        | 3         | 3         | -        | -         | 3        | -        |            |                      |
| 17       | 90474-333-000  | WASHER, SEALING, 8MM ..... | 4         | 4         | -        | -         | 4        | -        |            |                      |
| 18       | 91351-YG7-003  | O-RING, 217.5X3.5 .....    | 1         | 1         | -        | -         | 1        | -        |            |                      |
| 19       | 95701-08025-08 | BOLT, FLANGE, 8X25 .....   | 7         | 7         | -        | -         | 7        | -        |            |                      |
| 20       | 95701-08028-08 | BOLT, FLANGE, 8X28 .....   | 8         | 8         | -        | -         | 8        | -        |            |                      |

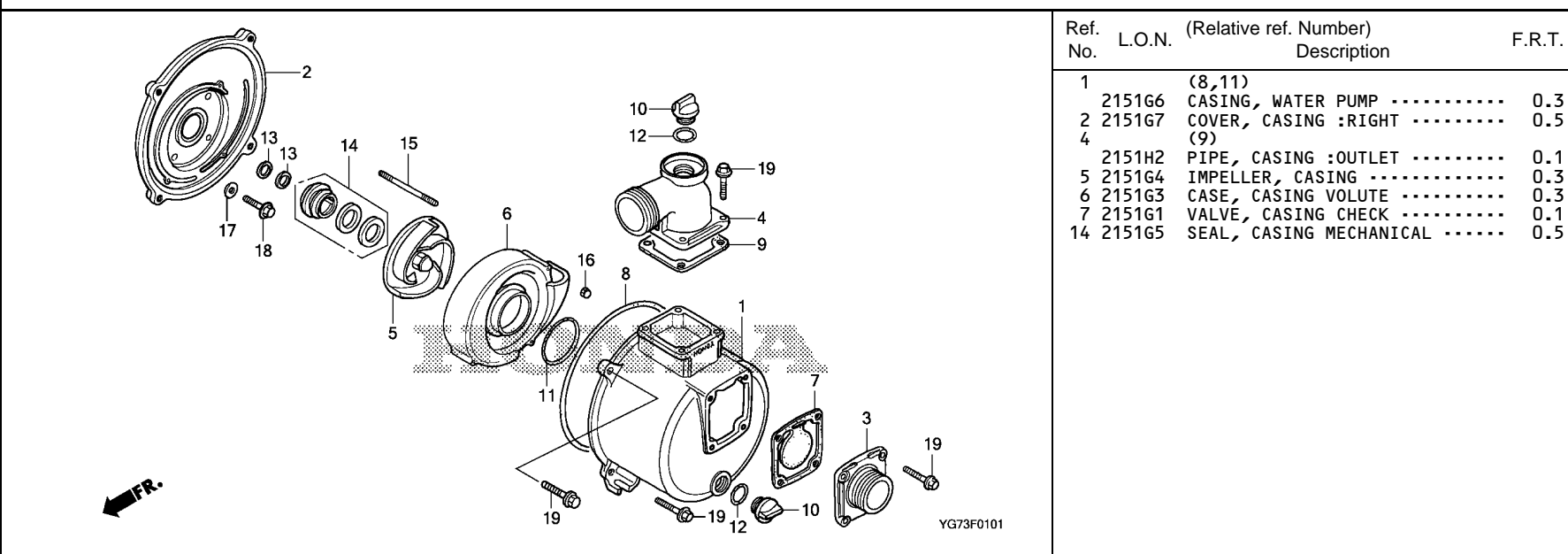
3



F-1-1

## CASING/IMPELLER(WB30XH/WB30XH2/WL30XH)

F 2



| Ref. No. | L.O.N. | (Relative ref. Number)<br>Description | F.R.T. |
|----------|--------|---------------------------------------|--------|
| 1        |        | (8,11)                                |        |
| 2151G6   |        | CASING, WATER PUMP .....              | 0.3    |
| 2151G7   |        | COVER, CASING :RIGHT .....            | 0.5    |
| 4        |        | (9)                                   |        |
| 2151H2   |        | PIPE, CASING :OUTLET .....            | 0.1    |
| 2151G4   |        | IMPELLER, CASING .....                | 0.3    |
| 2151G3   |        | CASE, CASING VOLUTE .....             | 0.3    |
| 2151G1   |        | VALVE, CASING CHECK .....             | 0.1    |
| 2151G5   |        | SEAL, CASING MECHANICAL .....         | 0.5    |

| Ref. No. | Part No.       | Description                | Reqd. QTY |           |          |           |          |          | Serial No. | Parts catalogue code |
|----------|----------------|----------------------------|-----------|-----------|----------|-----------|----------|----------|------------|----------------------|
|          |                |                            | WB 20 XH  | WB 20 XH2 | WB 30 XH | WB 30 XH2 | WL 20 XH | WL 30 XH |            |                      |
| 1        | 78101-YG8-000  | CASING .....               | -         | -         | 1        | -         | -        | -        |            |                      |
|          | 78101-YG8-A30  | .....                      | -         | -         | -        | 1         | -        | 1        |            |                      |
| 2        | 78102-YG4-000  | COVER, CASING .....        | -         | -         | 1        | -         | -        | -        |            |                      |
|          | 78102-YG8-A30  | .....                      | -         | -         | -        | 1         | -        | 1        |            |                      |
| 3        | 78103-YG4-000  | INLET(PF) .....            | -         | -         | 1        | 1         | -        | 1        |            |                      |
| 4        | 78104-YG4-000  | OUTLET(PF) .....           | -         | -         | 1        | 1         | -        | 1        |            |                      |
| 5        | 78106-YB4-000  | IMPELLER .....             | -         | -         | 1        | -         | -        | -        |            |                      |
|          | 78106-YG8-A30  | .....                      | -         | -         | -        | 1         | -        | 1        |            |                      |
| 6        | 78107-YB4-K10  | CASE, VOLUTE .....         | -         | -         | 1        | -         | -        | -        |            |                      |
|          | 78107-YG8-A30  | .....                      | -         | -         | -        | 1         | -        | 1        |            |                      |
| 7        | 78110-YB4-000  | VALVE COMP., IN. ....      | -         | -         | 1        | 1         | -        | 1        |            |                      |
| 8        | 78112-YB4-T21  | RING, CASING SEAL .....    | -         | -         | 1        | 1         | -        | 1        |            |                      |
| 9        | 78114-YB4-000  | PACKING, OUTLET .....      | -         | -         | 1        | 1         | -        | 1        |            |                      |
| 10       | 78117-YB3-K10  | CAP, FILLER .....          | -         | -         | 2        | 2         | -        | 2        |            |                      |
| 11       | 78118-YB4-006  | O-RING, 71X5.7 .....       | -         | -         | 1        | 1         | -        | 1        |            |                      |
| 12       | 78118-YG8-003  | RING, SEAL(B) .....        | -         | -         | 2        | 2         | -        | 2        |            |                      |
| 13       | 78122-YB3-000  | SHIM, ADJUSTER .....       | -         | -         | N        | N         | -        | N        |            |                      |
| 14       | 78130-YB4-004  | SEAL, MECHANICAL .....     | -         | -         | 1        | 1         | -        | 1        |            |                      |
| 15       | 90043-YB4-000  | BOLT, STUD, 6X50 .....     | -         | -         | 3        | 3         | -        | 3        |            |                      |
| 16       | 90281-YB4-000  | NUT, CAP, 6MM .....        | -         | -         | 3        | 3         | -        | 3        |            |                      |
| 17       | 90474-333-000  | WASHER, SEALING, 8MM ..... | -         | -         | 4        | 4         | -        | 4        |            |                      |
| 18       | 95701-08028-08 | BOLT, FLANGE, 8X28 .....   | -         | -         | 4        | 4         | -        | 4        |            |                      |
| 19       | 95701-10032-08 | BOLT, FLANGE, 10X32 .....  | -         | -         | 12       | 12        | -        | 12       |            |                      |

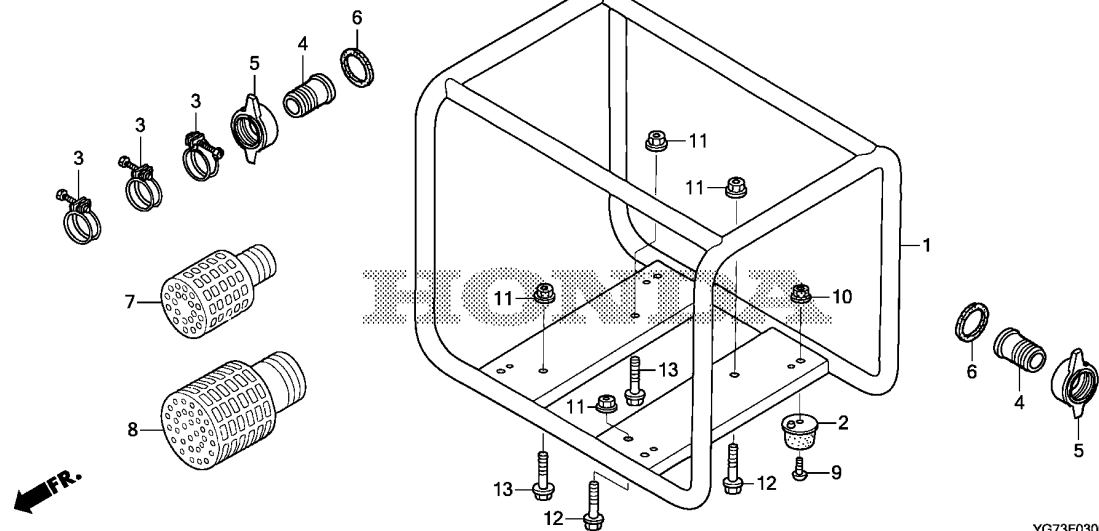
3



F-3

## FRAME BED/HOSE COUPLING

F 3



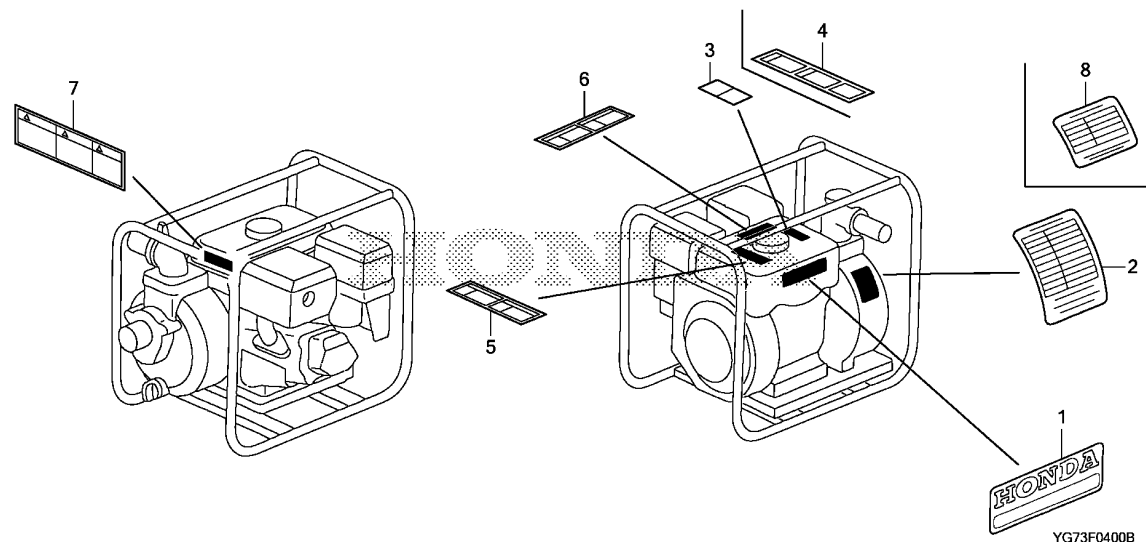
YG73F0300

| Ref. No. | L.O.N. | (Relative ref. Number) Description                              | F.R.T. |
|----------|--------|---|--------|
| 1        | 4101H6 | FRAME, MAIN .....<br>.INCLUDES: Engine removal and installation | 0.3    |
| 2        | 4101V0 | RUBBER, BOTTOM :LEFT FRONT ...                                  | 0.1    |
|          | 4101V1 | RUBBER, BOTTOM :RIGHT FRONT ..                                  | 0.1    |
|          | 4101V3 | RUBBER, BOTTOM :LEFT REAR ....                                  | 0.1    |
|          | 4101V4 | RUBBER, BOTTOM :RIGHT REAR ...                                  | 0.1    |

| Ref. No. | Part No.       | Description                  | Reqd. QTY |           |          |           |          |          | Serial No. | Parts catalogue code |
|----------|----------------|------------------------------|-----------|-----------|----------|-----------|----------|----------|------------|----------------------|
|          |                |                              | WB 20 XH  | WB 20 XH2 | WB 30 XH | WB 30 XH2 | WL 20 XH | WL 30 XH |            |                      |
| 1        | 50310-YG7-000  | FRAME COMP. ....             | 1         | -         | -        | -         | -        | -        |            |                      |
|          | 50310-YG7-A30  | FRAME COMP., PUMP .....      | -         | 1         | -        | -         | 1        | -        |            |                      |
|          | 50310-YG8-000  | FRAME COMP. ....             | -         | -         | 1        | -         | -        | -        |            |                      |
|          | 50310-YG8-A30  | FRAME COMP., PUMP .....      | -         | -         | -        | 1         | -        | 1        |            |                      |
| 2        | 60407-812-000  | RUBBER, BOTTOM .....         | 4         | 4         | 4        | 4         | 4        | 4        |            |                      |
| 3        | 78139-YB3-000  | BAND, HOSE .....             | 3         | 3         | -        | -         | 3        | -        |            |                      |
|          | 78139-YB4-000  | .....                        | -         | -         | 3        | 3         | -        | 3        |            |                      |
| 4        | 78311-954-010  | COUPLING, HOSE .....         | 2         | 2         | -        | -         | 2        | -        |            |                      |
|          | 78311-YB4-010  | .....                        | -         | -         | 2        | 2         | -        | 2        |            |                      |
| 5        | 78312-YG3-000  | RING, HOSE CLAMP .....       | 2         | -         | -        | -         | -        | -        |            |                      |
|          | 78312-YG7-A30  | .....                        | -         | 2         | -        | -         | 2        | -        |            |                      |
|          | 78312-YG4-000  | .....                        | -         | -         | 2        | -         | -        | -        |            |                      |
|          | 78312-YG8-A30  | .....                        | -         | -         | -        | 2         | -        | 2        |            |                      |
| 6        | 78313-YB3-000  | PACKING, HOSE COUPLING ..... | 2         | 2         | -        | -         | 2        | -        |            |                      |
|          | 78313-YB4-010  | PACKING, COUPLING .....      | -         | -         | 2        | 2         | -        | 2        |            |                      |
| 7        | 78325-YG3-000  | STRAINER COMP. ....          | 1         | 1         | -        | -         | 1        | -        |            |                      |
| 8        | 78325-YG4-000  | STRAINER COMP. ....          | -         | -         | 1        | 1         | -        | 1        |            |                      |
| 9        | 93500-06010-0A | SCREW, PAN, 6X10 .....       | 4         | 4         | 4        | 4         | 4        | 4        |            |                      |
| 10       | 94050-06080    | NUT, FLANGE, 6MM .....       | 4         | 4         | 4        | 4         | 4        | 4        |            |                      |
| 11       | 94050-08080    | NUT, FLANGE, 8MM .....       | 4         | 4         | 4        | 4         | 4        | 4        |            |                      |
| 12       | 95701-08025-00 | BOLT, FLANGE, 8X25 .....     | 2         | 2         | 2        | 2         | 2        | 2        |            |                      |
| 13       | 95701-08032-00 | BOLT, FLANGE, 8X32 .....     | 2         | 2         | 2        | 2         | 2        | 2        |            |                      |

3





Ref. L.O.N. (Relative ref. Number)  
No. Description F.R.T.

NO INFORMATION .....

| Ref. No. | Part No.      | Description                    | Reqd. QTY |           |          |           |          |          | Serial No. | Parts catalogue code |
|----------|---------------|--------------------------------|-----------|-----------|----------|-----------|----------|----------|------------|----------------------|
|          |               |                                | WB 20 XH  | WB 20 XH2 | WB 30 XH | WB 30 XH2 | WL 20 XH | WL 30 XH |            |                      |
| 1        | 78140-YG7-000 | MARK(WB20XH) .....             | 1         | -         | -        | -         | -        | -        |            |                      |
|          | 78140-YG7-B60 | .....                          | -         | 1         | -        | -         | -        | -        |            |                      |
|          | 78140-YG8-000 | MARK(WB30XH) .....             | -         | -         | 1        | -         | -        | -        |            |                      |
|          | 78140-YG8-A30 | .....                          | -         | -         | -        | 1         | -        | -        |            |                      |
|          | 78140-YG7-A30 | MARK(WL20XH) .....             | -         | -         | -        | -         | 1        | -        |            |                      |
|          | 78140-YG8-D30 | MARK(WL30XH) .....             | -         | -         | -        | -         | -        | 1        |            |                      |
| 2        | 87152-YG7-C00 | LABEL, SPEC .....              | 1         | -         | -        | -         | -        | -        | -----      | BRX                  |
|          | 87152-YG7-860 | .....                          | 1         | -         | -        | -         | -        | -        | -----      | DR,DRW,DRX           |
|          | 87152-YG8-C00 | .....                          | -         | -         | 1        | -         | -        | -        | -----      | BRX                  |
|          | 87152-YG8-860 | .....                          | -         | -         | 1        | -         | -        | -        | -----      | DR,DRW,DRX           |
| 3        | 87516-Z0S-G10 | LABEL, OPERATOR WARNING(EU) .. | 1         | 1         | 1        | 1         | 1        | 1        | -----      | BRX,DR,DRX           |
| 4        | 87114-YG4-690 | LABEL, WARNING .....           | 1         | -         | 1        | -         | -        | -        | -----      | DRW                  |
| 5        | 87520-YG7-890 | MARK A, COMBINATION .....      | 1         | -         | 1        | -         | 1        | 1        | -----      | DRW                  |
| 6        | 87526-Z0T-G90 | MARK B, COMBINATION .....      | 1         | -         | 1        | -         | 1        | 1        | -----      | DRW                  |
| 7        | 87114-YG8-E50 | LABEL, WARNING .....           | -         | -         | -        | -         | 1        | 1        | -----      | DRW                  |
| 8        | 87152-YG7-C30 | LABEL, SPEC .....              | -         | 1         | -        | -         | -        | -        | -----      | BRX                  |
|          | 87152-YG7-B60 | .....                          | -         | 1         | -        | -         | -        | -        | -----      | DR,DRX               |
|          | 87152-YG8-C30 | .....                          | -         | -         | -        | 1         | -        | -        | -----      | BRX                  |
|          | 87152-YG8-B60 | .....                          | -         | -         | -        | 1         | -        | -        | -----      | DR,DRX               |
|          | 87152-YG7-E60 | .....                          | -         | -         | -        | -         | 1        | -        |            |                      |
|          | 87152-YG8-E60 | .....                          | -         | -         | -        | -         | -        | 1        |            |                      |



# PART NO. INDEX

G 1

| Part Number   | Address | Page | Ref. | Part Number   | Address | Page | Ref. | Part Number     | Address | Page | Ref. | Part Number   | Address | Page | Ref. | Part Number   | Address | Page | Ref. |
|---------------|---------|------|------|---------------|---------|------|------|-----------------|---------|------|------|---------------|---------|------|------|---------------|---------|------|------|
| 06000         |         |      |      | 14000         |         |      |      | 16580-ZH8-030   | E2      | 35   | 10   | 28421-Z1T-701 | D8      | 25   | 3    | 35480-Z0T-003 | D2      | 19   | 5    |
| 06111-ZDK-000 | E4      | 37   | 1    | 14100-Z1T-810 | D6      | 23   | 2    | 16584-883-300   | E2      | 35   | 11   | 28421-Z1T-702 | D9      | 26   | 3    | 36000         |         |      |      |
| 11000         |         |      |      | 14410-ZE1-010 | D6      | 23   | 3    | 16610-Z1T-000   | D13     | 30   | 16   | 28421-ZDK-003 | D10     | 27   | 4    | 36100-ZF6-P82 | D11     | 28   | 7    |
| 11300-Z1T-630 | D3      | 20   | 1    | 14431-ZE1-000 | D6      | 23   | 4    | 16854-ZH8-000   | D16     | 33   | 1    | 28422-Z1T-701 | D8      | 25   | 15   | 36101-ZE1-010 | E1      | 34   | 7    |
| 11300-ZDK-630 | D3      | 20   | 1    | 14441-ZE1-010 | D6      | 23   | 5    | 16953-ZE1-812   | D13     | 30   | 17   | 28422-ZDK-003 | D10     | 27   | 5    | 50000         |         |      |      |
| 11381-Z1T-701 | D3      | 20   | 2    | 14451-Z7E-000 | D6      | 23   | 6    | 16954-ZE1-812   | D13     | 30   | 18   | 28422-ZH8-801 | D8      | 25   | 4    | 50310-YG7-000 | F3      | 40   | 1    |
| 11381-ZH8-801 | D3      | 20   | 2    | 14568-ZE1-000 | D6      | 23   | 7    | 16955-Z1T-010   | D16     | 33   | 2    | 28431-ZH8-801 | D8      | 25   | 5    | 50310-YG7-A30 | F3      | 40   | 1    |
|               |         |      |      | 14711-ZF1-000 | D6      | 23   | 8    | 16956-ZE1-811   | D13     | 30   | 19   | 28433-Z1T-701 | D8      | 25   | 16   | 50310-YG8-000 | F3      | 40   | 1    |
|               |         |      |      | 14721-ZF1-000 | D6      | 23   | 9    | 16957-ZE1-812   | D13     | 30   | 20   | 28433-Z1T-702 | D9      | 26   | 6    | 50310-YG8-A30 | F3      | 40   | 1    |
|               |         |      |      | 14751-ZF1-000 | D6      | 23   | 10   | 17000           |         |      |      | 28433-ZDK-003 | D10     | 27   | 6    |               |         |      |      |
|               |         |      |      | 14771-ZE1-000 | D6      | 23   | 11   | 17211-ZE1-000   | D14     | 31   | 1    | 28433-ZH8-801 | D8      | 25   | 6    |               |         |      |      |
|               |         |      |      | 14773-ZE1-000 | D6      | 23   | 12   | 17212-ZE1-000   | D14     | 31   | 2    | 28441-Z1T-701 | D8      | 25   | 17   |               |         |      |      |
| 12000         |         |      |      | 14781-ZE1-000 | D6      | 23   | 13   | 17231-ZE1-000   | D14     | 31   | 3    | 28441-ZDK-003 | D10     | 27   | 7    |               |         |      |      |
| 12000-Z1T-405 | D2      | 19   | 1    | 14791-ZE1-010 | D6      | 23   | 14   | 17238-ZE7-010   | D14     | 31   | 4    | 28441-ZH8-801 | D8      | 25   | 7    | 60000         |         |      |      |
| 12000-Z1T-406 | D2      | 19   | 1    |               |         |      |      | 17239-ZE1-000   | D14     | 31   | 5    |               | D9      | 26   | 7    | 60407-812-000 | F3      | 40   | 2    |
| 12000-ZDK-405 | D2      | 19   | 1    |               |         |      |      | 17410-Z1T-000   | D14     | 31   | 6    | 28442-ZDK-003 | D10     | 27   | 8    |               |         |      |      |
| 12000-ZDK-406 | D2      | 19   | 1    |               |         |      |      | 17410-Z1T-010   | D14     | 31   | 6    | 28442-ZH8-003 | D8      | 25   | 8    | 78000         |         |      |      |
| 12204-ZE1-306 | D1      | 18   | 1    | 15000         |         |      |      | 17421-ZE1-000   | D14     | 31   | 7    |               | D9      | 26   | 8    |               |         |      |      |
| 12205-ZE1-315 | D1      | 18   | 2    | 15600-Z1T-000 | D3      | 20   | 3    | 17510-ZDK-000ZB | D16     | 33   | 12   | 28443-Z1T-701 | D8      | 25   | 18   | 78101-YG7-000 | F1      | 38   | 1    |
| 12209-ZH8-003 | D6      | 23   | 1    | 15600-Z1T-600 | D3      | 20   | 4    | 17510-ZE1-030ZA | D16     | 33   | 3    |               | D9      | 26   | 9    | 78101-YG7-A30 | F1      | 38   | 1    |
| 12210-Z1T-010 | D1      | 18   | 3    | 15625-Z1T-000 | D3      | 20   | 5    | 17510-ZE1-030ZN | D16     | 33   | 3    | 28443-ZDK-003 | D10     | 27   | 9    | 78101-YG8-000 | F2      | 39   | 1    |
| 12210-Z1T-405 | D1      | 18   | 3    | 15721-ZH8-000 | D1      | 18   | 8    | 17620-Z1T-800   | D16     | 33   | 4    | 28443-ZH8-801 | D8      | 25   | 9    | 78101-YG8-A30 | F2      | 39   | 1    |
| 12216-ZE5-300 | D1      | 18   | 4    |               |         |      |      | 17631-Z1T-800   | D16     | 33   | 5    | 28451-Z1T-700 | E1      | 34   | 3    | 78102-YG3-000 | F1      | 38   | 2    |
| 12251-Z1T-003 | D1      | 18   | 5    | 16000         |         |      |      | 17672-ZE2-W01   | D16     | 33   | 6    | 28451-ZDK-003 | E1      | 34   | 3    | 78102-YG4-000 | F2      | 39   | 2    |
| 12251-Z1T-701 | D1      | 18   | 5    | 16010-ZE0-025 | D12     | 29   | 1    |                 |         |      |      | 28451-ZDK-003 | D10     | 27   | 10   | 78102-YG7-A30 | F1      | 38   | 2    |
| 12251-ZL0-003 | D1      | 18   | 5    | 16011-Z1T-711 | D12     | 29   | 2    | 18000           |         |      |      | 28461-ZDK-003 | D10     | 27   | 10   | 78102-YG8-A30 | F2      | 39   | 2    |
| 12310-ZE1-020 | D1      | 18   | 6    | 16011-ZE0-005 | D12     | 29   | 2    |                 |         |      |      | 28461-ZH8-013 | D8      | 25   | 10   | 78103-YG3-000 | F1      | 38   | 3    |
| 12312-Z1T-701 | D1      | 18   | 7    | 16013-Z0S-B01 | D12     | 29   | 3    | 18310-Z1T-000   | D15     | 32   | 1    |               | D9      | 26   | 10   | 78103-YG4-000 | F2      | 39   | 3    |
| 12391-ZE1-000 | D1      | 18   | 7    | 16013-Z1T-711 | D12     | 29   | 3    | 18310-Z1T-010   | D15     | 32   | 1    | 28462-Z1T-701 | D8      | 25   | 11   | 78104-YG3-000 | F1      | 38   | 4    |
|               |         |      |      | 16015-ZE0-831 | D12     | 29   | 4    | 18310-ZDK-000   | D15     | 32   | 1    |               | D9      | 26   | 11   | 78104-YG4-000 | F2      | 39   | 4    |
| 13000         |         |      |      | 16016-ZH7-W01 | D12     | 29   | 5    | 18320-Z1T-010   | D15     | 32   | 2    | 28462-ZDK-003 | D10     | 27   | 11   | 78106-YB3-000 | F1      | 38   | 5    |
| 13010-Z1T-701 | D4      | 21   | 1    | 16024-ZE1-811 | D12     | 29   | 6    | 18320-ZDK-000   | D15     | 32   | 2    | 28462-ZH8-003 | D8      | 25   | 11   | 78106-YB4-000 | F2      | 39   | 5    |
| 13010-Z4K-004 | D4      | 21   | 1    | 16028-ZE0-005 | D12     | 29   | 7    | 18381-Z1T-003   | D15     | 32   | 3    |               |         |      |      | 78106-YG7-A30 | F1      | 38   | 5    |
| 13010-Z4P-003 | D4      | 21   | 1    | 16044-ZE0-005 | D12     | 29   | 8    | 18381-Z1T-701   | D15     | 32   | 3    | 30000         |         |      |      | 78106-YG8-A30 | F2      | 39   | 5    |
| 13011-Z1T-701 | D4      | 21   | 1    | 16100-Z1T-701 | D12     | 29   | 9    |                 |         |      |      | 30500-Z1T-023 | E1      | 34   | 4    | 78107-YB3-K10 | F1      | 38   | 6    |
| 13011-Z4K-004 | D4      | 21   | 1    | 16100-Z1T-W71 | D12     | 29   | 9    | 19000           |         |      |      | 30500-ZDK-004 | E1      | 34   | 4    | 78107-YB4-K10 | F2      | 39   | 6    |
| 13011-Z4P-003 | D4      | 21   | 1    | 16100-ZDK-003 | D12     | 29   | 9    | 19511-Z1T-000   | E1      | 34   | 2    | 30700-Z1T-003 | E1      | 34   | 5    | 78107-YG7-A30 | F1      | 38   | 6    |
| 13012-Z1T-701 | D4      | 21   | 1    | 16124-ZE0-005 | D12     | 29   | 10   | 19610-ZDK-000ZA | D11     | 28   | 1    | 30700-ZDK-004 | E1      | 34   | 5    | 78107-YG8-A30 | F2      | 39   | 6    |
| 13012-Z4K-004 | D4      | 21   | 1    | 16166-ZH8-W50 | D12     | 29   | 11   | 19610-ZE1-010ZP | D11     | 28   | 1    |               |         |      |      | 78110-YB3-000 | F1      | 38   | 7    |
| 13012-Z4P-003 | D4      | 21   | 1    | 16166-ZH8-W60 | D12     | 29   | 11   | 19611-ZH8-810   | D11     | 28   | 2    | 31000         |         |      |      | 78110-YB4-000 | F2      | 39   | 7    |
| 13013-Z1T-701 | D4      | 21   | 1    | 16211-Z1T-000 | D12     | 29   | 12   | 19612-ZH8-000   | D11     | 28   | 3    |               |         |      |      | 78112-YB4-T21 | F2      | 39   | 8    |
| 13013-Z4K-004 | D4      | 21   | 1    | 16212-Z1T-701 | D12     | 29   | 13   | 19631-Z1T-000   | D11     | 28   | 4    | 31110-Z1T-003 | E1      | 34   | 6    | 78114-YB3-000 | F1      | 38   | 8    |
| 13013-Z4P-003 | D4      | 21   | 1    | 16212-ZH8-800 | D13     | 30   | 13   | 19631-ZDK-000   | D11     | 28   | 4    | 31110-Z1T-004 | E1      | 34   | 6    | 78114-YB4-000 | F2      | 39   | 9    |
| 13101-Z1T-010 | D4      | 21   | 2    | 16220-ZE1-020 | D13     | 30   | 14   |                 |         |      |      |               |         |      |      | 78117-YB3-K10 | F1      | 38   | 9    |
| 13101-ZH8-020 | D4      | 21   | 2    | 16221-Z1T-701 | D13     | 30   | 15   | 28000           |         |      |      |               |         |      |      |               | F2      | 39   | 10   |
| 13102-Z1T-000 | D4      | 21   | 2    | 16221-ZH8-801 | D13     | 30   | 15   | 28400-Z0T-003ZB | D8      | 25   | 1    | 32195-ZDK-004 | E1      | 34   | 7    | 78118-YB4-006 | F2      | 39   | 11   |
| 13102-ZH8-020 | D4      | 21   | 2    | 16500-Z1T-000 | E2      | 35   | 1    | 28400-Z1T-701   | D8      | 25   | 14   |               |         |      |      | 78118-YG7-003 | F1      | 38   | 10   |
| 13103-Z1T-000 | D4      | 21   | 2    | 16510-Z1T-000 | D2      | 19   | 2    | 28400-Z1T-702ZB | D9      | 26   | 1    | 34000         |         |      |      | 78118-YG8-003 | F1      | 38   | 11   |
| 13103-ZH8-020 | D4      | 21   | 2    | 16531-Z1T-000 | D2      | 19   | 3    | 28400-ZDK-003   | D10     | 27   | 1    |               |         |      |      |               | F2      | 39   | 12   |
| 13104-Z1T-000 | D4      | 21   | 2    | 16541-Z1T-000 | D2      | 19   | 4    | 28410-Z1T-701   | D8      | 25   | 2    | 34150-ZH7-013 | D11     | 28   | 5    | 78122-YB3-000 | F1      | 38   | 12   |
| 13104-ZH8-020 | D4      | 21   | 2    | 16551-ZE0-010 | E2      | 35   | 2    | 28410-Z1T-701ZB | D9      | 26   | 2    | 34150-ZH7-023 | D11     | 28   | 5    |               | F2      | 39   | 13   |
| 13111-Z1T-000 | D4      | 21   | 3    | 16555-ZE1-000 | E2      | 35   | 3    | 28410-ZH8-003YA | D8      | 25   | 2    |               |         |      |      | 78139-YB3-000 | F3      | 40   | 3    |
| 13200-Z0T-800 | D4      | 21   | 4    | 16561-ZE1-020 | E2      | 35   | 4    | 28414-ZDK-003   | D10     | 27   | 2    | 35000         |         |      |      | 78139-YB4-000 | F3      | 40   | 3    |
| 13200-Z1T-600 | D4      | 21   | 4    | 16562-ZE1-020 | E2      | 35   | 5    | 28415-ZDK-003   | D10     | 27   | 3    |               |         |      |      | 78140-YG7-000 | F4      | 41   | 1    |
| 13310-YB4-010 | D4      | 21   | 5    | 16571-Z1T-000 | E2      | 35   | 6    | 28421-Z0T-003   | D8      | 25   | 3    | 35120-Z0D-V81 | D11     | 28   | 6    | 78140-YG7-A30 | F4      | 41   | 1    |
| 13310-Z1T-870 | D5      | 22   | 5    | 16574-ZE1-000 | E2      | 35   | 7    |                 |         |      |      |               |         |      |      |               |         |      |      |
| 13331-357-000 | E1      | 34   | 1    | 16575-ZH8-000 | E2      | 35   | 8    |                 |         |      |      |               |         |      |      |               |         |      |      |
|               |         |      |      | 16578-ZE1-000 | E2      | 35   | 9    |                 |         |      |      |               |         |      |      |               |         |      |      |



# PART NO. INDEX

G 2

| Part Number   | Address | Page | Ref. | Part Number    | Address | Page | Ref. | Part Number    | Address | Page | Ref. | Part Number | Address | Page | Ref. | Part Number | Address | Page | Ref. |
|---------------|---------|------|------|----------------|---------|------|------|----------------|---------|------|------|-------------|---------|------|------|-------------|---------|------|------|
| 78140-YG7-B60 | F4      | 41   | 1    | 90022-888-010  | D11     | 28   | 9    | 94301-10160    | D1      | 18   | 12   |             |         |      |      |             |         |      |      |
| 78140-YG8-000 | F4      | 41   | 1    | 90034-402-000  | F1      | 38   | 14   | 94305-20122    | D13     | 30   | 22   |             |         |      |      |             |         |      |      |
| 78140-YG8-A30 | F4      | 41   | 1    |                |         |      |      |                |         |      |      |             |         |      |      |             |         |      |      |
| 78140-YG8-D30 | F4      | 41   | 1    | 90043-YB4-000  | F1      | 38   | 15   | 95000          |         |      |      |             |         |      |      |             |         |      |      |
| 78311-954-010 | F3      | 40   | 4    |                | F2      | 39   | 15   |                |         |      |      |             |         |      |      |             |         |      |      |
| 78311-YB4-010 | F3      | 40   | 4    | 90043-ZDK-000  | D1      | 18   | 10   | 95001-45140-40 | D16     | 33   | 10   |             |         |      |      |             |         |      |      |
| 78312-YG3-000 | F3      | 40   | 5    | 90043-ZE1-020  | D1      | 18   | 10   | 95002-02080    | D16     | 33   | 11   |             |         |      |      |             |         |      |      |
| 78312-YG4-000 | F3      | 40   | 5    | 90047-ZDK-000  | D1      | 18   | 11   | 95701-06008-00 | D11     | 28   | 11   |             |         |      |      |             |         |      |      |
| 78312-YG7-A30 | F3      | 40   | 5    | 90047-ZE1-000  | D1      | 18   | 11   | 95701-06012-00 | D2      | 19   | 16   |             |         |      |      |             |         |      |      |
| 78312-YG8-A30 | F3      | 40   | 5    | 90050-ZE1-000  | D15     | 32   | 4    | 95701-06016-00 | D10     | 27   | 13   |             |         |      |      |             |         |      |      |
| 78313-YB3-000 | F3      | 40   | 6    | 90114-SA0-000  | E2      | 35   | 14   | 95701-06020-00 | D14     | 31   | 10   |             |         |      |      |             |         |      |      |
| 78313-YB4-010 | F3      | 40   | 6    | 90121-952-000  | E1      | 34   | 8    | 95701-08025-00 | F3      | 40   | 12   |             |         |      |      |             |         |      |      |
| 78325-YG3-000 | F3      | 40   | 7    | 90131-ZE1-000  | D2      | 19   | 6    | 95701-08025-08 | F1      | 38   | 19   |             |         |      |      |             |         |      |      |
| 78325-YG4-000 | F3      | 40   | 8    | 90201-Z1T-000  | E1      | 34   | 9    | 95701-08028-08 | F1      | 38   | 20   |             |         |      |      |             |         |      |      |
|               |         |      |      | 90202-Z1T-000  | E2      | 35   | 14   |                | F2      | 39   | 18   |             |         |      |      |             |         |      |      |
| 87000         |         |      |      | 90206-ZE1-000  | D6      | 23   | 16   | 95701-08032-00 | D3      | 20   | 8    |             |         |      |      |             |         |      |      |
|               |         |      |      | 90281-YB4-000  | F1      | 38   | 16   |                | F3      | 40   | 13   |             |         |      |      |             |         |      |      |
| 87114-YG4-690 | F4      | 41   | 4    |                | F2      | 39   | 16   | 95701-08060-00 | D1      | 18   | 13   |             |         |      |      |             |         |      |      |
| 87114-YG8-E50 | F4      | 41   | 7    | 90325-044-000  | D14     | 31   | 8    | 95701-10032-08 | F2      | 39   | 19   |             |         |      |      |             |         |      |      |
| 87152-YG7-860 | F4      | 41   | 2    | 90451-Z1T-000  | D2      | 19   | 7    |                |         |      |      |             |         |      |      |             |         |      |      |
| 87152-YG7-B60 | F4      | 41   | 8    | 90474-333-000  | F1      | 38   | 17   | 96000          |         |      |      |             |         |      |      |             |         |      |      |
| 87152-YG7-C00 | F4      | 41   | 2    |                | F2      | 39   | 17   |                |         |      |      |             |         |      |      |             |         |      |      |
| 87152-YG7-C30 | F4      | 41   | 8    | 90551-ZE1-000  | D5      | 22   | 7    | 96100-62050-00 | D3      | 20   | 9    |             |         |      |      |             |         |      |      |
| 87152-YG7-E60 | F4      | 41   | 8    | 90601-Z1T-003  | D11     | 28   | 10   |                |         |      |      |             |         |      |      |             |         |      |      |
| 87152-YG8-860 | F4      | 41   | 2    | 90601-ZE1-000  | D2      | 19   | 8    | 98000          |         |      |      |             |         |      |      |             |         |      |      |
| 87152-YG8-B60 | F4      | 41   | 8    | 90602-ZE1-000  | D2      | 19   | 9    |                |         |      |      |             |         |      |      |             |         |      |      |
| 87152-YG8-C00 | F4      | 41   | 2    |                |         |      |      | 98079-56846    | D1      | 18   | 14   |             |         |      |      |             |         |      |      |
| 87152-YG8-C30 | F4      | 41   | 8    | 91000          |         |      |      | 98079-56855    | D1      | 18   | 14   |             |         |      |      |             |         |      |      |
| 87152-YG8-E60 | F4      | 41   | 8    |                |         |      |      |                |         |      |      |             |         |      |      |             |         |      |      |
| 87516-Z0S-G10 | F4      | 41   | 3    | 91001-Z1T-003  | D2      | 19   | 10   | 99000          |         |      |      |             |         |      |      |             |         |      |      |
| 87520-YG7-890 | F4      | 41   | 5    | 91001-ZDK-005  | D2      | 19   | 10   |                |         |      |      |             |         |      |      |             |         |      |      |
| 87521-ZDK-000 | E3      | 36   | 1    | 91001-ZF1-003  | D2      | 19   | 10   | 99101-ZH8-0650 | D13     | 30   | 23   |             |         |      |      |             |         |      |      |
| 87521-ZH8-040 | E3      | 36   | 1    | 91001-ZF1-004  | D2      | 19   | 10   | 99101-ZH8-0680 | D13     | 30   | 23   |             |         |      |      |             |         |      |      |
| 87526-Z0T-G90 | F4      | 41   | 6    | 91002-ZDK-005  | D3      | 20   | 9    | 99101-ZH8-0700 | D13     | 30   | 23   |             |         |      |      |             |         |      |      |
| 87528-ZE1-810 | E3      | 36   | 2    | 91202-Z1T-003  | D2      | 19   | 11   | 99101-ZH8-0720 | D13     | 30   | 23   |             |         |      |      |             |         |      |      |
| 87530-Z15-T10 | E3      | 36   | 3    |                | D3      | 20   | 6    | 99204-ZE0-0350 | D13     | 30   | 24   |             |         |      |      |             |         |      |      |
| 87532-ZH8-810 | E3      | 36   | 3    | 91351-YG7-003  | F1      | 38   | 18   |                |         |      |      |             |         |      |      |             |         |      |      |
|               |         |      |      | 91351-YG7-A30  | F1      | 38   | 10   |                |         |      |      |             |         |      |      |             |         |      |      |
| 89000         |         |      |      | 91353-671-004  | D16     | 33   | 8    |                |         |      |      |             |         |      |      |             |         |      |      |
|               |         |      |      | 91353-Z7E-003  | D2      | 19   | 12   |                |         |      |      |             |         |      |      |             |         |      |      |
| 89218-ZE1-000 | E3      | 36   | 4    |                |         |      |      |                |         |      |      |             |         |      |      |             |         |      |      |
| 89219-805-000 | E3      | 36   | 5    | 93000          |         |      |      |                |         |      |      |             |         |      |      |             |         |      |      |
|               |         |      |      |                |         |      |      |                |         |      |      |             |         |      |      |             |         |      |      |
| 90000         |         |      |      | 93500-03006-1H | D13     | 30   | 21   |                |         |      |      |             |         |      |      |             |         |      |      |
|               |         |      |      | 93500-05025-0A | E2      | 35   | 15   |                |         |      |      |             |         |      |      |             |         |      |      |
| 90001-Z1T-000 | D5      | 22   | 6    | 93500-06010-0A | F3      | 40   | 9    |                |         |      |      |             |         |      |      |             |         |      |      |
| 90001-ZE1-000 | D5      | 22   | 6    |                |         |      |      |                |         |      |      |             |         |      |      |             |         |      |      |
| 90003-Z1T-701 | D8      | 25   | 19   | 94000          |         |      |      |                |         |      |      |             |         |      |      |             |         |      |      |
| 90003-ZDK-003 | D10     | 27   | 12   |                |         |      |      |                |         |      |      |             |         |      |      |             |         |      |      |
| 90003-ZH8-801 | D8      | 25   | 12   | 94001-08000-0S | D15     | 32   | 5    |                |         |      |      |             |         |      |      |             |         |      |      |
|               | D9      | 26   | 12   | 94050-06000    | D14     | 31   | 9    |                |         |      |      |             |         |      |      |             |         |      |      |
| 90004-Z1T-000 | D16     | 33   | 7    |                | D16     | 33   | 9    |                |         |      |      |             |         |      |      |             |         |      |      |
| 90008-Z1T-000 | D8      | 25   | 13   |                | E2      | 35   | 16   |                |         |      |      |             |         |      |      |             |         |      |      |
|               | D9      | 26   | 13   | 94050-06080    | F3      | 40   | 10   |                |         |      |      |             |         |      |      |             |         |      |      |
| 90012-ZE0-010 | D6      | 23   | 15   | 94050-08080    | F3      | 40   | 11   |                |         |      |      |             |         |      |      |             |         |      |      |
| 90013-883-000 | D1      | 18   | 9    | 94050-10000    | D2      | 19   | 13   |                |         |      |      |             |         |      |      |             |         |      |      |
|               | D11     | 28   | 8    | 94101-06800    | D2      | 19   | 14   |                |         |      |      |             |         |      |      |             |         |      |      |
|               | E2      | 35   | 12   | 94251-08000    | D2      | 19   | 15   |                |         |      |      |             |         |      |      |             |         |      |      |
| 90015-ZE5-010 | E2      | 35   | 13   | 94301-08140    | D3      | 20   | 7    |                |         |      |      |             |         |      |      |             |         |      |      |



# PART NAME INDEX

H 1

| Part name                        | Address | Page | Ref. | Part name                      | Address | Page | Ref. | Part name                          | Address | Page | Ref. |
|----------------------------------|---------|------|------|--------------------------------|---------|------|------|------------------------------------|---------|------|------|
| [ A ]                            |         |      |      | CASE, VOLUTE .....             | F2      | 39   | 6    | GUIDE, RATCHET .....               | D10     | 27   | 6    |
| ALERT UNIT, OIL .....            | D11     | 28   | 5    | CASING .....                   | F1      | 38   | 1    | [ H ]                              |         |      |      |
| ARM, GOVERNOR .....              | E2      | 35   | 2    | CHAMBER SET, FLOAT .....       | F2      | 39   | 1    | HANDLE, BOX WRENCH .....           | E3      | 36   | 5    |
| ARM, VALVE ROCKER .....          | D6      | 23   | 4    | CHOKE SET .....                | D12     | 29   | 4    | HEAD COMP., CYLINDER .....         | D1      | 18   | 3    |
| [ B ]                            |         |      |      | CLIP, GOVERNOR HOLDER .....    | D2      | 19   | 9    | [ I ]                              |         |      |      |
| BAND, HOSE .....                 | F3      | 40   | 3    | CLIP, HARNESS .....            | D11     | 28   | 10   | IMPELLER .....                     | F1      | 38   | 5    |
| BARREL ASSY., CYLINDER .....     | D2      | 19   | 1    | CLIP, PISTON PIN, 18MM .....   | D5      | 22   | 7    |                                    | F2      | 39   | 5    |
| BASE COMP., CONTROL .....        | E2      | 35   | 10   | CLIP, TUBE .....               | D16     | 33   | 11   | INLET .....                        | F1      | 38   | 3    |
| BEARING, RADIAL BALL .....       | D2      | 19   | 10   | CLIP, VALVE GUIDE .....        | D1      | 18   | 4    |                                    | F2      | 39   | 3    |
| BEARING, RADIAL BALL, 6205 ..... | D2      | 19   | 10   | COIL ASSY., IGNITION .....     | E1      | 34   | 4    | INSULATOR, CARBURETOR .....        | D12     | 29   | 12   |
|                                  | D3      | 20   | 9    | COLLAR B, AIR CLEANER .....    | D14     | 31   | 5    | [ J ]                              |         |      |      |
| BOLT, CONNECTING ROD .....       | D5      | 22   | 6    | COLLAR, AIR CLEANER .....      | D14     | 31   | 4    | JET SET, PILOT, #35 .....          | D13     | 30   | 24   |
| BOLT, DRAIN PLUG .....           | D2      | 19   | 6    | COLLAR, RECOIL STARTER .....   | D10     | 27   | 3    | JET, MAIN, #65 .....               | D13     | 30   | 23   |
| BOLT, FLANGE, 10X32 .....        | F2      | 39   | 19   | CONTROL ASSY. ....             | E2      | 35   | 1    | JET, MAIN, #68 .....               | D13     | 30   | 23   |
| BOLT, FLANGE, 6X10 .....         | D8      | 25   | 13   | CORD, STOP SWITCH .....        | E1      | 34   | 7    | JET, MAIN, #70 .....               | D13     | 30   | 23   |
|                                  | D9      | 26   | 13   | COUPLING, HOSE .....           | F3      | 40   | 4    | JET, MAIN, #72 .....               | D13     | 30   | 23   |
| BOLT, FLANGE, 6X12 .....         | D1      | 18   | 9    | COVER ASSY., CRANKCASE .....   | D3      | 20   | 1    | JOINT, FUEL TANK .....             | D16     | 33   | 2    |
|                                  | D2      | 19   | 16   | COVER COMP., FAN .....         | D11     | 28   | 1    | [ K ]                              |         |      |      |
|                                  | D11     | 28   | 8    | COVER COMP., HEAD .....        | D1      | 18   | 6    | KEY, SPECIAL WOODRUFF, 25X18 ..... | E1      | 34   | 1    |
|                                  | E2      | 35   | 12   | COVER, AIR CLEANER .....       | D14     | 31   | 3    | KNOB, RECOIL STARTER .....         | D8      | 25   | 10   |
| BOLT, FLANGE, 6X16 .....         | D10     | 27   | 13   | COVER, CASING .....            | F1      | 38   | 2    |                                    | D9      | 26   | 10   |
| BOLT, FLANGE, 6X20 .....         | D11     | 28   | 9    |                                | F2      | 39   | 2    |                                    | D10     | 27   | 10   |
|                                  | D14     | 31   | 10   | CRANKSHAFT COMP. ....          | D4      | 21   | 5    | [ L ]                              |         |      |      |
| BOLT, FLANGE, 6X25 .....         | E1      | 34   | 8    |                                | D5      | 22   | 5    | LABEL, OIL ALERT .....             | E3      | 36   | 3    |
| BOLT, FLANGE, 6X29 .....         | D16     | 33   | 7    | [ D ]                          |         |      |      | LABEL, OPERATOR WARNING .....      | F4      | 41   | 3    |
| BOLT, FLANGE, 6X8 .....          | D11     | 28   | 11   | DOWEL PIN, 10X16 .....         | D1      | 18   | 12   | LABEL, SPEC .....                  | F4      | 41   | 2    |
| BOLT, FLANGE, 8X25 .....         | F1      | 38   | 19   | DOWEL PIN, 8X14 .....          | D3      | 20   | 7    |                                    |         |      |      |
|                                  | F3      | 40   | 12   | [ E ]                          |         |      |      | LABEL, WARNING .....               | F4      | 41   | 4    |
| BOLT, FLANGE, 8X28 .....         | F1      | 38   | 20   | ELBOW COMP., AIR CLEANER ..... | D14     | 31   | 6    |                                    |         |      |      |
|                                  | F2      | 39   | 18   | ELEMENT, AIR CLEANER .....     | D14     | 31   | 1    | LEVER COMP., CHOKE .....           | D13     | 30   | 16   |
| BOLT, FLANGE, 8X32 .....         | D3      | 20   | 8    | EMBLEM .....                   | E3      | 36   | 1    | LEVER, COCK .....                  | D13     | 30   | 17   |
|                                  | F3      | 40   | 13   | [ F ]                          |         |      |      | LEVER, CONTROL .....               | E2      | 35   | 6    |
| BOLT, FLANGE, 8X60 .....         | D1      | 18   | 13   | FAN, COOLING .....             | E1      | 34   | 2    | LIFTER, VALVE .....                | D6      | 23   | 5    |
| BOLT, GOVERNOR ARM .....         | E2      | 35   | 13   | FILTER, FUEL .....             | D16     | 33   | 6    | [ M ]                              |         |      |      |
| BOLT, PIVOT, 8MM .....           | D6      | 23   | 15   | FLOAT SET .....                | D12     | 29   | 3    | MARK .....                         | F4      | 41   | 1    |
| BOLT, STUD, 6X112 .....          | D1      | 18   | 10   | FLYWHEEL COMP. ....            | E1      | 34   | 6    | MARK A, COMBINATION .....          | F4      | 41   | 5    |
| BOLT, STUD, 6X50 .....           | F1      | 38   | 14   | FRAME COMP. ....               | F3      | 40   | 1    | MARK B, COMBINATION .....          | F4      | 41   | 6    |
|                                  |         |      |      | FRAME COMP., PUMP .....        | F3      | 40   | 1    | MARK, CHOKE .....                  | E3      | 36   | 2    |
|                                  | F2      | 39   | 15   | [ G ]                          |         |      |      | MARK, OIL ALERT .....              | E3      | 36   | 3    |
| BOLT, STUD, 8X32 .....           | D1      | 18   | 11   | GASKET KIT .....               | E4      | 37   | 1    | MUFFLER COMP. ....                 | D15     | 32   | 1    |
| [ C ]                            |         |      |      | GASKET SET .....               | D12     | 29   | 1    | [ N ]                              |         |      |      |
| CAMSHAFT ASSY. ....              | D6      | 23   | 2    | GASKET, CYLINDER HEAD .....    | D1      | 18   | 5    | NOZZLE, MAIN .....                 | D12     | 29   | 11   |
| CAP ASSY., NOISE SUPPRESSOR ..   | E1      | 34   | 5    | GASKET, MUFFLER .....          | D15     | 32   | 3    | NUT, CAP, 6MM .....                | F1      | 38   | 16   |
| CAP ASSY., OIL FILLER .....      | D3      | 20   | 3    | GOVERNOR ASSY. ....            | D2      | 19   | 2    |                                    | F2      | 39   | 16   |
|                                  |         |      |      | GRID, AIR CLEANER .....        | D14     | 31   | 2    | NUT, FLANGE, 10MM .....            | D2      | 19   | 13   |
| CAP COMP., FUEL FILLER .....     | D16     | 33   | 4    | GUIDE, EX. VALVE .....         | D1      | 18   | 2    |                                    |         |      |      |
| CAP, CLEANER .....               | D14     | 31   | 7    | GUIDE, IN. VALVE .....         | D1      | 18   | 1    |                                    |         |      |      |
| CAP, FILLER .....                | F1      | 38   | 9    | GUIDE, RATCHET .....           | D8      | 25   | 6    |                                    |         |      |      |
|                                  | F2      | 39   | 10   |                                |         |      | 16   |                                    |         |      |      |
| CARBURETOR ASSY. ....            | D12     | 29   | 9    |                                | D9      | 26   | 6    |                                    |         |      |      |
| CASE COMP., RECOIL STARTER ...   | D8      | 25   | 2    |                                |         |      |      |                                    |         |      |      |
|                                  | D9      | 26   | 2    |                                |         |      |      |                                    |         |      |      |
| CASE, RECOIL STARTER .....       | D10     | 27   | 2    |                                |         |      |      |                                    |         |      |      |
| CASE, VOLUTE .....               | F1      | 38   | 6    |                                |         |      |      |                                    |         |      |      |



# PART NAME INDEX

H 2

| Part name                      | Address | Page | Ref. | Part name                       | Address | Page | Ref. | Part name                       | Address | Page | Ref. |
|--------------------------------|---------|------|------|---------------------------------|---------|------|------|---------------------------------|---------|------|------|
| NUT, FLANGE, 6MM .....         | D14     | 31   | 9    | RATCHET, STARTER .....          | D10     | 27   | 5    | SPRING, RETURN .....            | D10     | 27   | 9    |
|                                | D16     | 33   | 9    | REEL, RECOIL STARTER .....      | D8      | 25   | 3    | SPRING, THROTTLE RETURN .....   | E2      | 35   | 5    |
|                                | E2      | 35   | 16   |                                 | D9      | 26   | 3    | SPRING, VALVE .....             | D6      | 23   | 10   |
|                                | F3      | 40   | 10   |                                 | D10     | 27   | 4    | SPRING, WEIGHT RETURN .....     | D6      | 23   | 7    |
| NUT, FLANGE, 8MM .....         | F3      | 40   | 11   | RETAINER, EX. VALVE SPRING .... | D6      | 23   | 12   | STARTER ASSY., RECOIL .....     | D8      | 25   | 1    |
| NUT, HEX., 8MM .....           | D15     | 32   | 5    | RETAINER, IN. VALVE SPRING .... | D6      | 23   | 11   |                                 |         |      | 14   |
| NUT, PIVOT ADJUSTING .....     | D6      | 23   | 16   | RING SET, PISTON .....          | D4      | 21   | 1    |                                 | D9      | 26   | 1    |
| NUT, SELF-LOCK, 6MM .....      | E2      | 35   | 14   | RING, CASING SEAL .....         | F2      | 39   | 8    |                                 | D10     | 27   | 1    |
| NUT, SPECIAL, 14MM .....       | E1      | 34   | 9    | RING, HOSE CLAMP .....          | F3      | 40   | 5    | STRAINER COMP. ....             | F3      | 40   | 7    |
| NUT, TOOL BOX SETTING .....    | D14     | 31   | 8    | RING, SEAL .....                | F1      | 38   | 11   |                                 |         |      | 8    |
|                                |         |      |      |                                 | F2      | 39   | 12   | SWITCH ASSY., ENGINE STOP ..... | D11     | 28   | 6    |
| [ O ]                          |         |      |      | ROD ASSY., CONNECTING .....     | D4      | 21   | 4    |                                 |         |      | 7    |
| OIL SEAL, 25X41X6 .....        | D2      | 19   | 11   | ROD, GOVERNOR .....             | E2      | 35   | 3    | SWITCH ASSY., OIL LEVEL .....   | D2      | 19   | 5    |
|                                | D3      | 20   | 6    | ROD, PUSH .....                 | D6      | 23   | 3    |                                 |         |      |      |
| O-RING, 14MM .....             | D2      | 19   | 12   | ROPE, RECOIL STARTER .....      | D8      | 25   | 11   | [ T ]                           |         |      |      |
|                                | D16     | 33   | 8    |                                 | D9      | 26   | 11   | TANK COMP., FUEL .....          | D16     | 33   | 3    |
| O-RING, 217.5X3.5 .....        | F1      | 38   | 18   |                                 | D10     | 27   | 11   |                                 |         |      | 12   |
| O-RING, 49X5.7 .....           | F1      | 38   | 10   | ROTATOR, VALVE .....            | D6      | 23   | 13   | TUBE, BREATHER .....            | D1      | 18   | 8    |
| O-RING, 71X5.7 .....           | F2      | 39   | 11   | RUBBER, BOTTOM .....            | F3      | 40   | 2    | TUBE, FUEL, 4.5X140 .....       | D16     | 33   | 10   |
| OUTLET .....                   | F1      | 38   | 4    | RUBBER, SUPPORTER .....         | D16     | 33   | 1    |                                 |         |      |      |
|                                | F2      | 39   | 4    |                                 |         |      |      | [ V ]                           |         |      |      |
| O RING, 53X5.7 .....           | F1      | 38   | 10   |                                 |         |      |      | VALVE COMP., IN. ....           | F2      | 39   | 7    |
| [ P ]                          |         |      |      | SCREW SET .....                 | D12     | 29   | 7    | VALVE SET, FLOAT .....          | D12     | 29   | 2    |
| PACKING, CARBURETOR .....      | D13     | 30   | 15   | SCREW SET, DRAIN .....          | D12     | 29   | 6    | VALVE, EX. ....                 | D6      | 23   | 9    |
| PACKING, CASE COVER .....      | D3      | 20   | 2    | SCREW SET, PILOT .....          | D12     | 29   | 5    | VALVE, IN. ....                 | D6      | 23   | 8    |
| PACKING, COUPLING .....        | F3      | 40   | 6    | SCREW, PAN, 3X6 .....           | D13     | 30   | 21   |                                 | F1      | 38   | 7    |
| PACKING, FUEL COCK .....       | D13     | 30   | 20   | SCREW, PAN, 5X25 .....          | E2      | 35   | 15   |                                 |         |      |      |
| PACKING, FUEL FILLER CAP ..... | D16     | 33   | 5    | SCREW, PAN, 6X10 .....          | F3      | 40   | 9    |                                 |         |      |      |
| PACKING, HEAD COVER .....      | D1      | 18   | 7    | SCREW, SETTING .....            | D8      | 25   | 12   | [ W ]                           |         |      |      |
| PACKING, HOSE COUPLING .....   | F3      | 40   | 6    |                                 |         |      |      | WASHER, CONTROL LEVER .....     | E2      | 35   | 8    |
| PACKING, INSULATOR .....       | D12     | 29   | 13   |                                 | D9      | 26   | 12   | WASHER, DRAIN PLUG, 10.2MM .... | D2      | 19   | 8    |
|                                | D13     | 30   | 13   | SCREW, TAPPING, 5X8 .....       | D10     | 27   | 12   | WASHER, PLAIN, 6MM .....        | D2      | 19   | 14   |
| PACKING, OIL FILLER CAP .....  | D3      | 20   | 5    | SCREW, THROTTLE STOP .....      | D12     | 29   | 10   | WASHER, SEALING, 8MM .....      | F1      | 38   | 17   |
| PACKING, OUTLET .....          | F1      | 38   | 8    | SEAL, MECHANICAL .....          | F1      | 38   | 13   |                                 | F2      | 39   | 17   |
|                                | F2      | 39   | 9    |                                 | F2      | 39   | 14   | WASHER, THRUST, 6MM .....       | D2      | 19   | 7    |
| PIN, LOCK, 8MM .....           | D2      | 19   | 15   | SEAL, VALVE STEM .....          | D6      | 23   | 1    | WRENCH COMP., SPARK PLUG .....  | E3      | 36   | 4    |
| PIN, PISTON .....              | D4      | 21   | 3    | SHAFT, GOVERNOR ARM .....       | D2      | 19   | 4    |                                 |         |      |      |
| PIN, SPRING, 2X12 .....        | D13     | 30   | 22   | SHIM, ADJUSTER .....            | F1      | 38   | 12   |                                 |         |      |      |
| PISTON .....                   | D4      | 21   | 2    |                                 | F2      | 39   | 13   |                                 |         |      |      |
| PIVOT, ROCKER ARM .....        | D6      | 23   | 6    | SHROUD .....                    | D11     | 28   | 4    |                                 |         |      |      |
| PLATE COMP., SIDE .....        | D11     | 28   | 2    | SLIDER, GOVERNOR .....          | D2      | 19   | 3    |                                 |         |      |      |
| PLATE, FRICTION .....          | D8      | 25   | 5    | SPACER COMP., CARBURETOR .....  | D13     | 30   | 14   |                                 |         |      |      |
|                                | D9      | 26   | 5    | SPACER, CONTROL LEVER .....     | E2      | 35   | 9    |                                 |         |      |      |
| PLATE, LEVER SETTING .....     | D13     | 30   | 18   | SPRING, COCK LEVER .....        | D13     | 30   | 19   |                                 |         |      |      |
| PLATE, PUSH ROD GUIDE .....    | D6      | 23   | 14   | SPRING, CONTROL ADJUSTING ..... | E2      | 35   | 11   |                                 |         |      |      |
| PLATE, SIDE .....              | D11     | 28   | 3    | SPRING, FRICTION .....          | D8      | 25   | 7    |                                 |         |      |      |
| PLUG, SPARK .....              | D1      | 18   | 14   |                                 |         |      |      |                                 |         |      |      |
| PROTECTOR COMP., MUFFLER ..... | D15     | 32   | 2    |                                 | D9      | 26   | 7    |                                 |         |      |      |
| PROTECTOR, MUFFLER .....       | D15     | 32   | 2    |                                 | D10     | 27   | 7    |                                 |         |      |      |
| PULLEY, STARTER .....          | E1      | 34   | 3    | SPRING, GOVERNOR .....          | E2      | 35   | 4    |                                 |         |      |      |
|                                |         |      |      | SPRING, LEVER .....             | E2      | 35   | 7    |                                 |         |      |      |
| [ R ]                          |         |      |      | SPRING, RECOIL STARTER .....    | D8      | 25   | 8    |                                 |         |      |      |
| RATCHET, STARTER .....         | D8      | 25   | 4    |                                 | D9      | 26   | 8    |                                 |         |      |      |
|                                |         |      | 15   |                                 | D10     | 27   | 8    |                                 |         |      |      |
|                                | D9      | 26   | 4    | SPRING, RETURN .....            | D8      | 25   | 9    |                                 |         |      |      |
|                                |         |      |      |                                 |         |      | 18   |                                 |         |      |      |
|                                |         |      |      |                                 | D9      | 26   | 9    |                                 |         |      |      |



---

**1**

**FOREWORD INDEX**

---

**2**

**ENGINE GROUP**

---

**3**

**FRAME GROUP**

---

**4**

**PART NUMBER INDEX**

---

**5**

**PART NAME INDEX**

---







January 05, 2014



# PARTS CATALOGUE NEWS

Honda Motor Co., Ltd.

Customer Service Technology Development Division

## PARTS CATALOGUE - CORRECTED

Printed in Japan

|                            |  |
|----------------------------|--|
| CODE NO.                   | 13YG7C02   |
| PARTS<br>CATALOGUE<br>NEWS | WB20XH<br>WB20XH2<br>WB30XH<br>WB30XH2<br>WL20XH<br>WL30XH |
| NEWS NO.                   | 001  |

| Block<br>No. | Ref.<br>No. | Note | Part No.       | Description                             | Reqd. QTY      |                 |                |                 |                |                | Serial No. | Parts catalogue code |
|--------------|-------------|------|----------------|---|----------------|-----------------|----------------|-----------------|----------------|----------------|------------|----------------------|
|              |             |      |                |   | WB<br>20<br>XH | WB<br>20<br>XH2 | WB<br>30<br>XH | WB<br>30<br>XH2 | WL<br>20<br>XH | WL<br>30<br>XH |            |                      |
| E-3          | 10          | E    | 91001-ZDK-005  | * PART NO.DELETION                      |                |                 |                |                 |                |                |            |                      |
|              |             | T    | 91001-Z1T-003  | BEARING, RADIAL BALL, 6205<br>(NSK)     | 1              | 1               | 1              | 1               | 1              | 1              |            |                      |
|              |             | T    | 91001-ZF1-003  | BEARING, RADIAL BALL (6205TMB)<br>(NTN) | 1              | 1               | 1              | 1               | 1              | 1              |            |                      |
|              |             | T    | 91001-ZF1-004  | BEARING, RADIAL BALL (6205SH)<br>(KOYO) | 1              | 1               | 1              | 1               | 1              | 1              |            |                      |
| E-6          | 9           | E    | 91002-ZDK-005  | * PART NO.DELETION                      |                |                 |                |                 |                |                |            |                      |
|              |             | T    | 96100-62050-00 | BEARING, RADIAL BALL, 6205.....         | 1              | 1               | 1              | 1               | 1              | 1              |            |                      |

NOTE A:PART NO. CHANGE D:NEWLY PROVIDED E:PART NO.DELETION K:REQUIRED NO. CORRECTION L:APPLICATION SERIAL NO. CORRECTION  
M:PART DESCRIPTION CORRECTION T:APPLICATION CORRECTION Z:REMARKS CHANGE